

2011

WNC Wireless

This article briefly shows how to connect to a wireless network using a Windows computer.

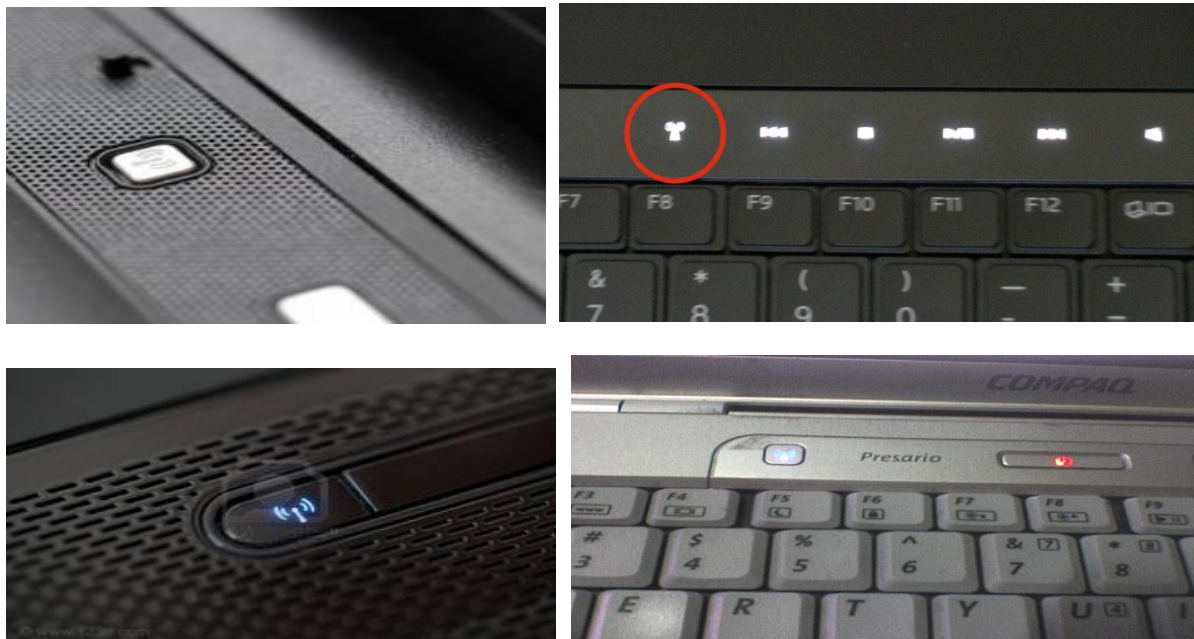


How To Enable Wireless on a Notebook

Enabling wireless on a notebook is done by using a button on the notebook. There are many different models of notebooks out there but most of the time you just need to physically look over the notebook and find the wireless symbol which should look something like one of the examples below:



Sometimes to enable wireless you just touch the button or icon other times you might need to use one of the Function keys on the keyboard, or turn on a little switch to enable it. Below are a few examples of the buttons and icons:



Enabling the wireless function depends on which Windows operating system the computer has, but regardless of the operating system, the steps to turning on the wireless connection are basic.

Enable Wireless on Vista and Windows 7

1. Click "Start" and open the "Control Panel."
2. Click "Network and Internet" and open "Network and Sharing Center."
3. Windows 7 Select "Change Adaptor Settings" on the left of the screen.

Windows Vista Select "Manage Network Connection" under the "Tasks" List.

4. Right-click "Wireless Network Connection" and click "Enable."

Enable XP Wireless

1. Click "Start" and click "Control Panel."
2. Open "Network Connections."
3. Click the "Wireless Networks" tab.
4. Select the "Use Windows to configure my wireless network settings" check box

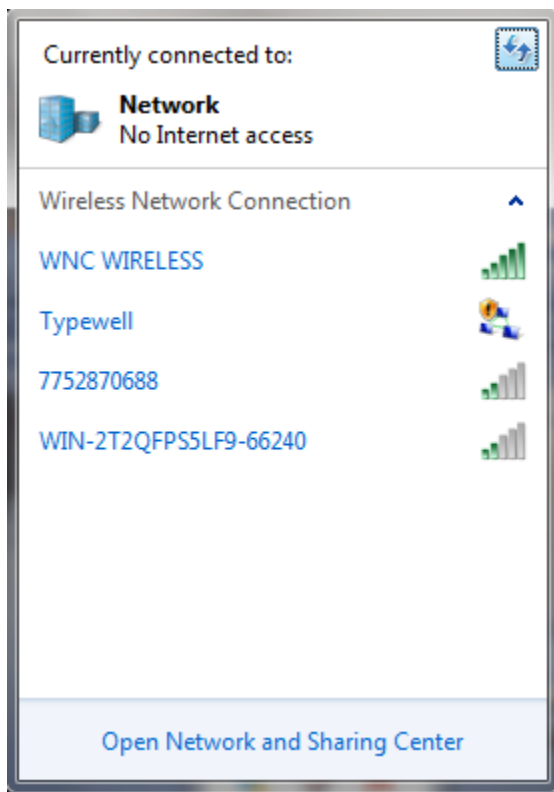
Connecting to the WNC Wireless Network

IMPORTANT: If your Notebook is using third party software to connect you to wireless networks you will have to refer to the third party's website for instructions on connecting with their software.

Now that we have enabled the wireless card we need to actually connect to the *WNC Wireless Network*. To do this left click on the Wireless Network icon on the taskbar located on the bottom right side of your screen.



A window with available network connections will open.

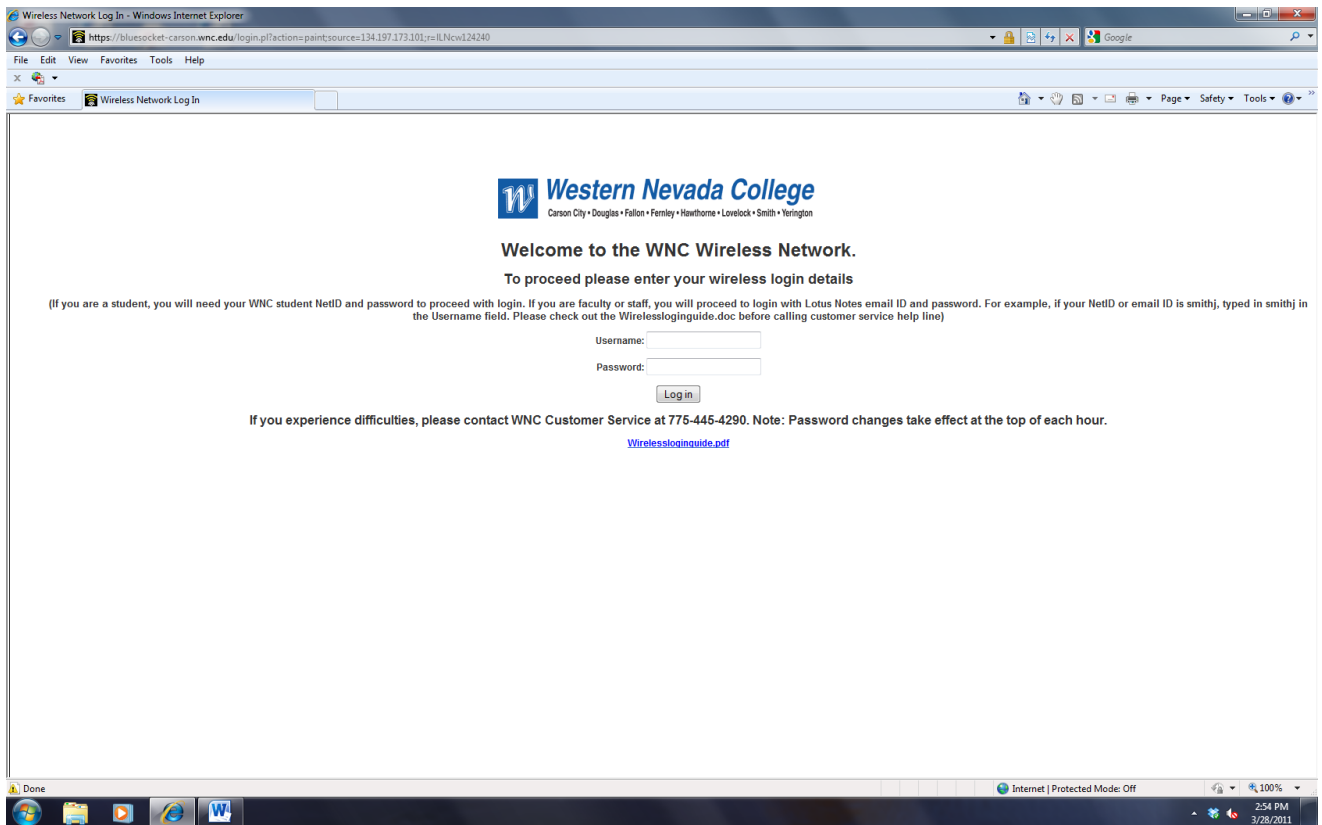


Select "WNC WIRELESS"

The Wireless Network Icon should look like the “Connected” icon below.



Open up a web browser and follow the onscreen directions.



“This example was shown in Windows 7”