



WESTERN NEVADA COMMUNITY COLLEGE

2005 RECENT GRADUATE SURVEY

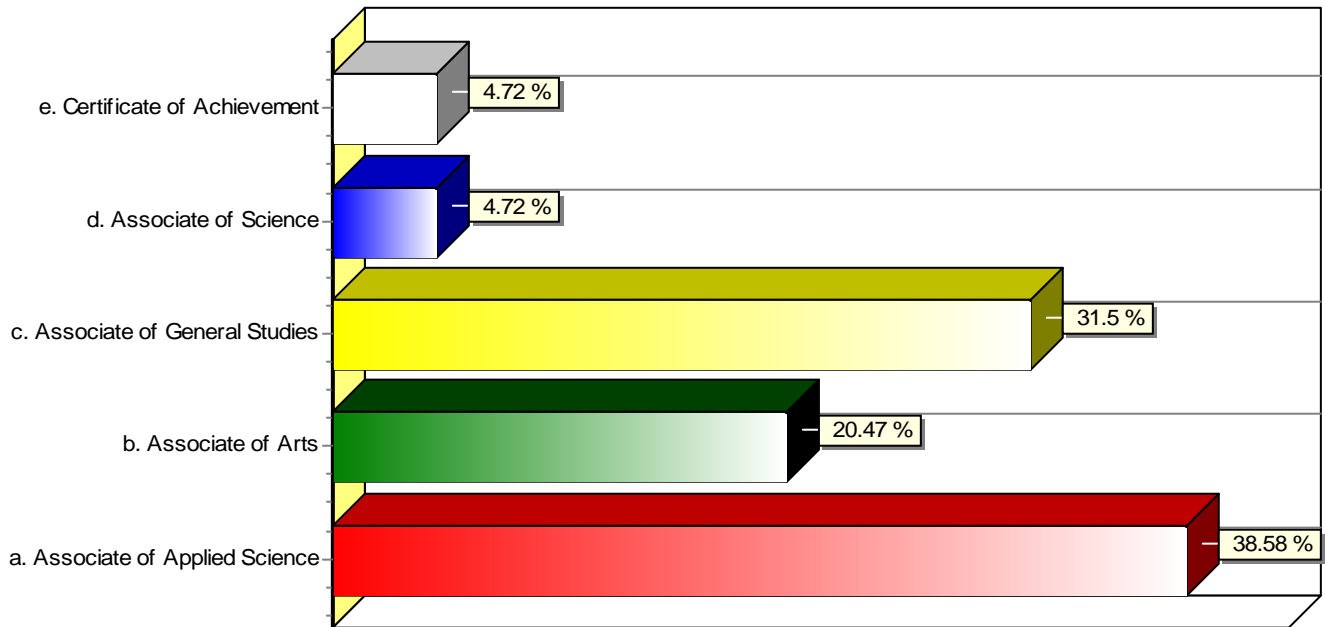
NOTE: This survey mailed to 350 students. IR received 128 responses (37%).

March 29, 2006

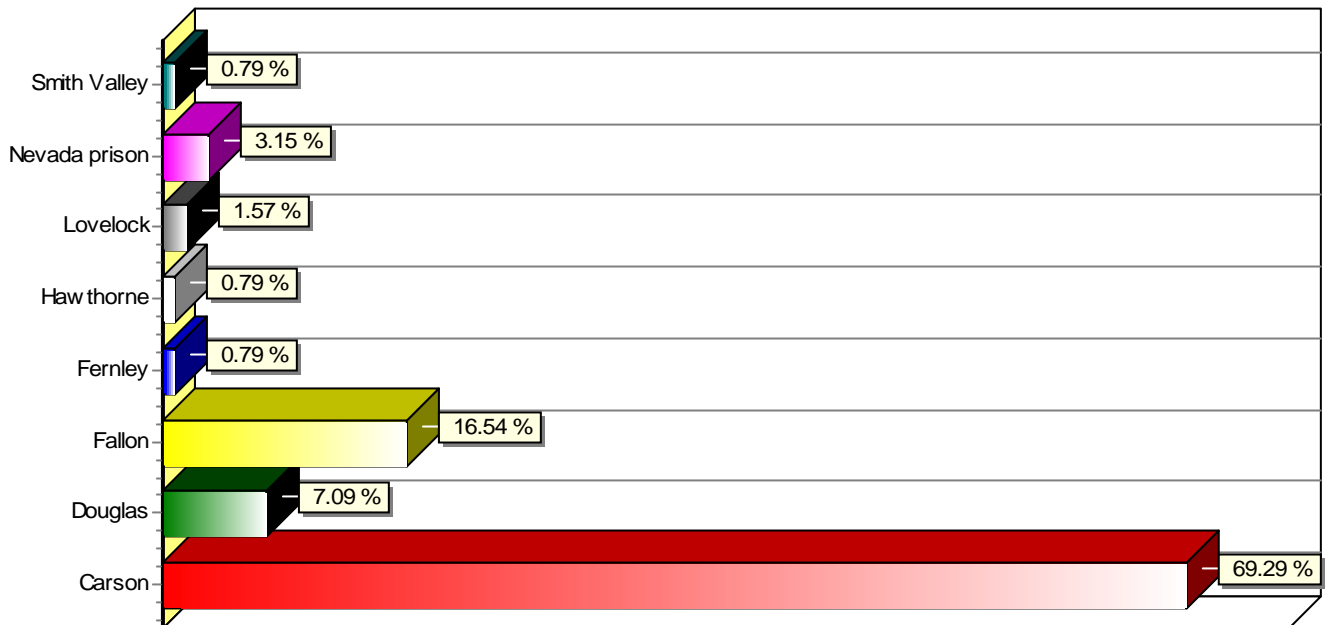
Institutional Research

WNCC 2005 Recent Graduate Survey (Excludes Unanswered)

1. What type of degree/certificate did you receive? (CHOOSE ONLY ONE.)

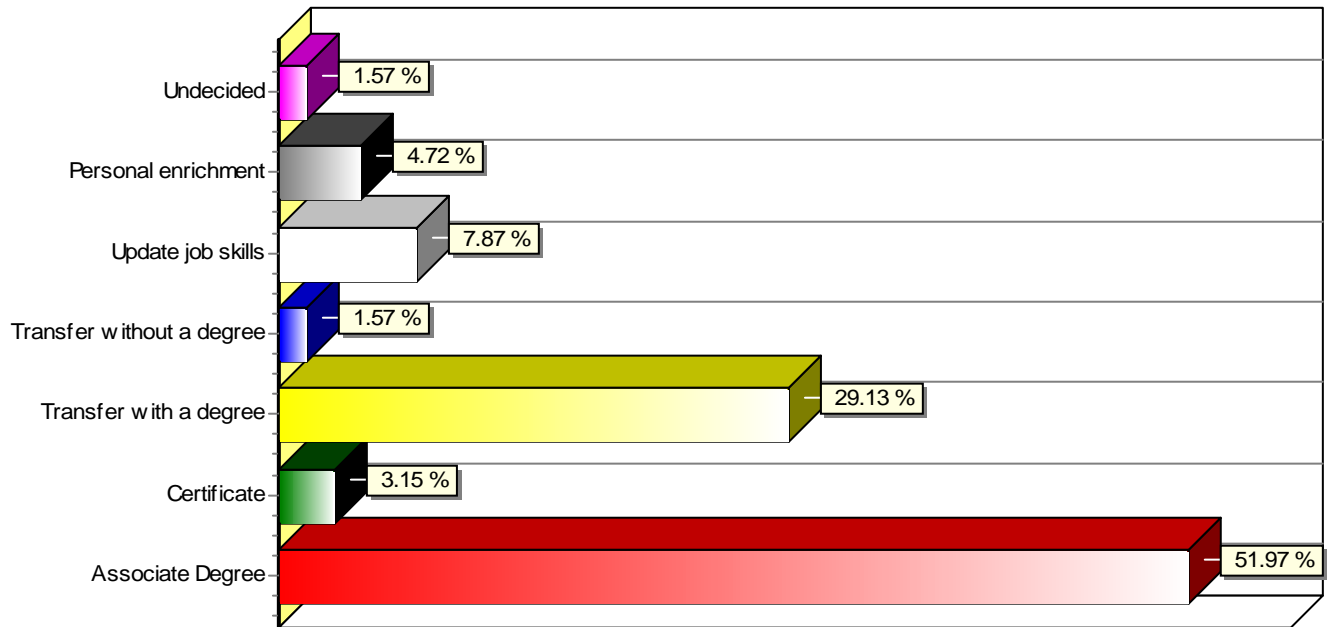


2. What was your primary campus? (CHOOSE ONLY ONE.)

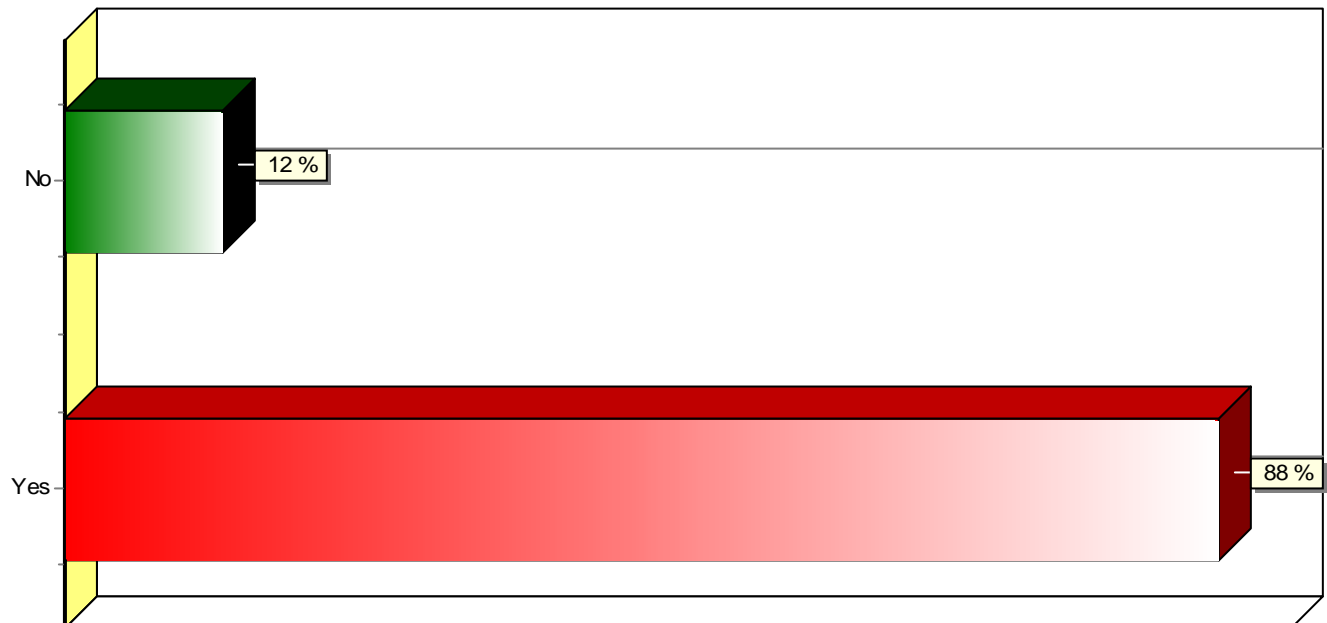


WNCC 2005 Recent Graduate Survey (Excludes Unanswered)

3. When you entered WNCC what was your primary goal? (CHOOSE ONLY ONE.)

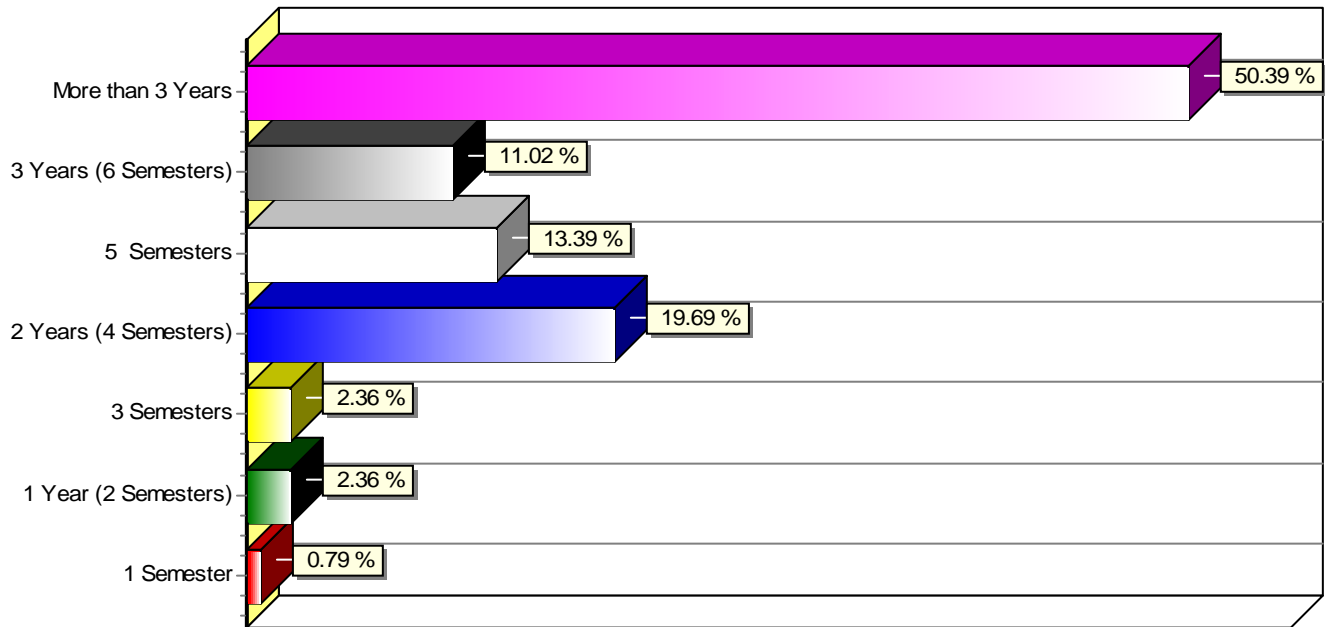


4. Did you attain the primary goal selected in question #3?

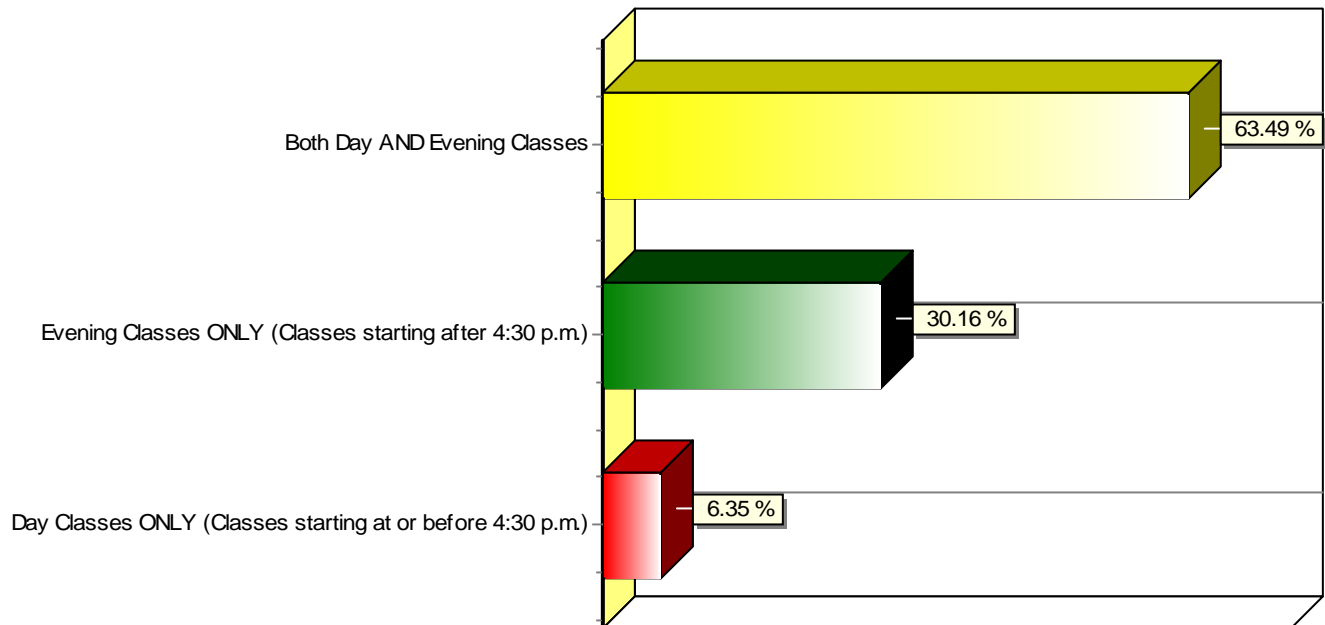


WNCC 2005 Recent Graduate Survey (Excludes Unanswered)

5. Time in attendance at WNCC

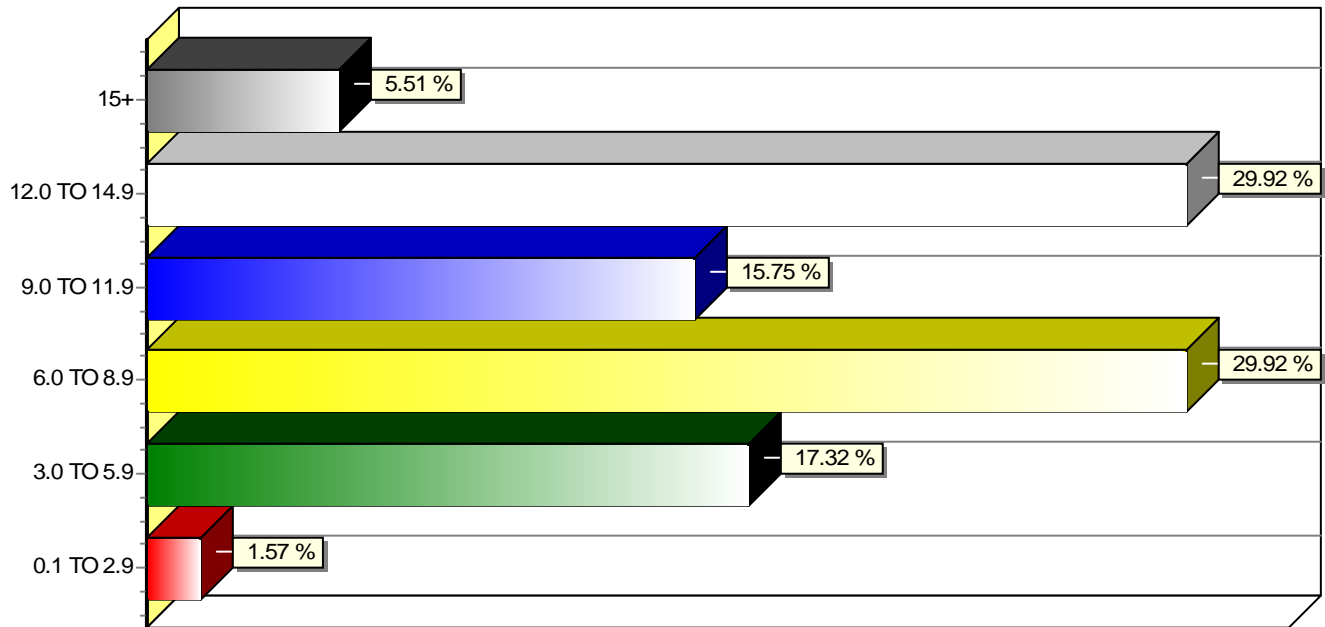


6. Please make ONE choice to indicate the time of day you attended WNCC.

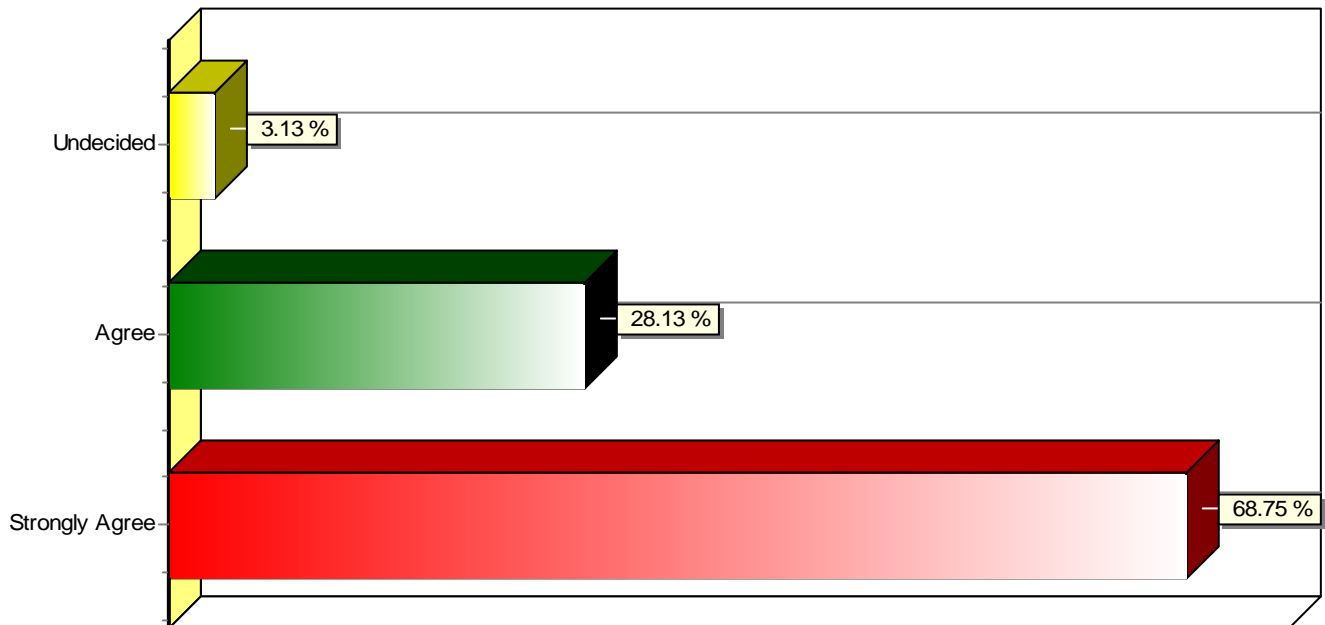


WNCC 2005 Recent Graduate Survey (Excludes Unanswered)

7. Please make ONE choice to indicate the average number of credits you took each term.

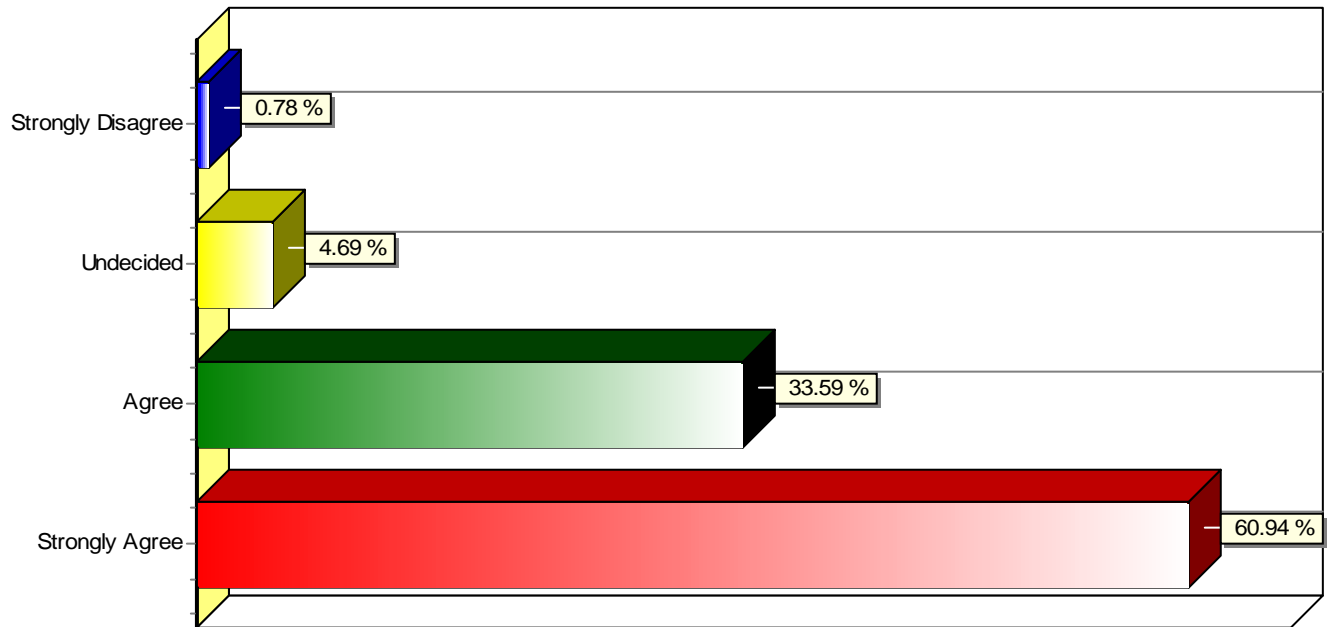


8. I would recommend WNCC to others

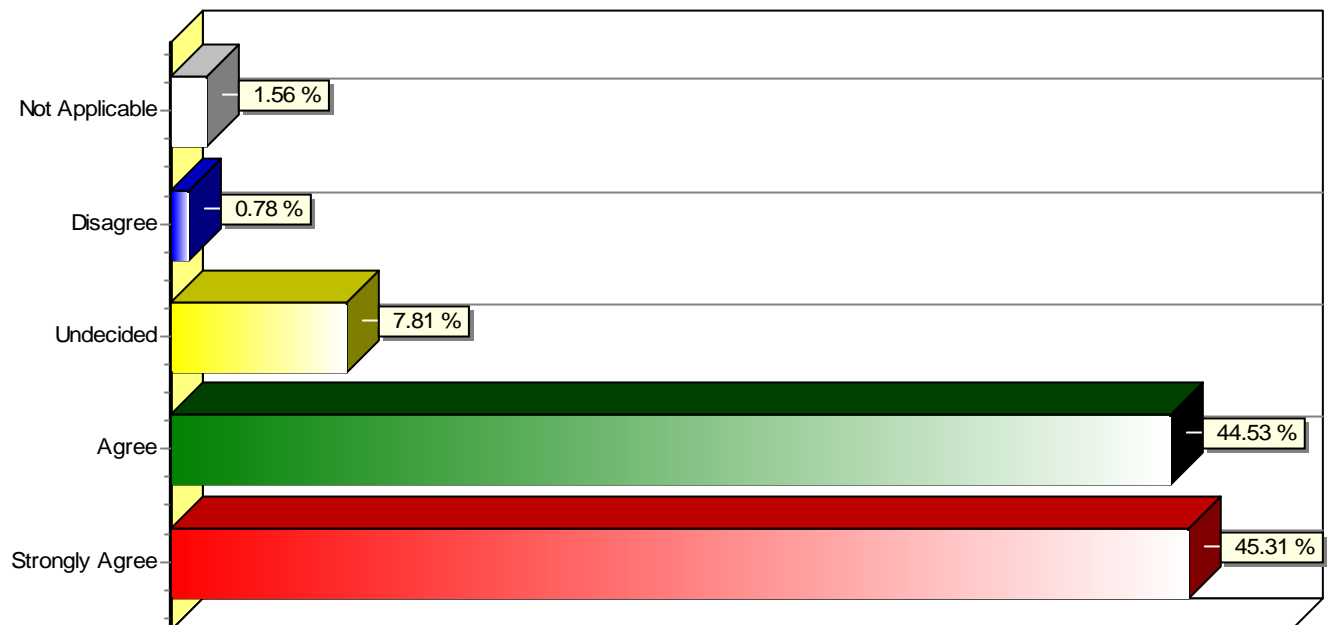


WNCC 2005 Recent Graduate Survey (Excludes Unanswered)

9. My education at WNCC was worth the expenditure of time and money

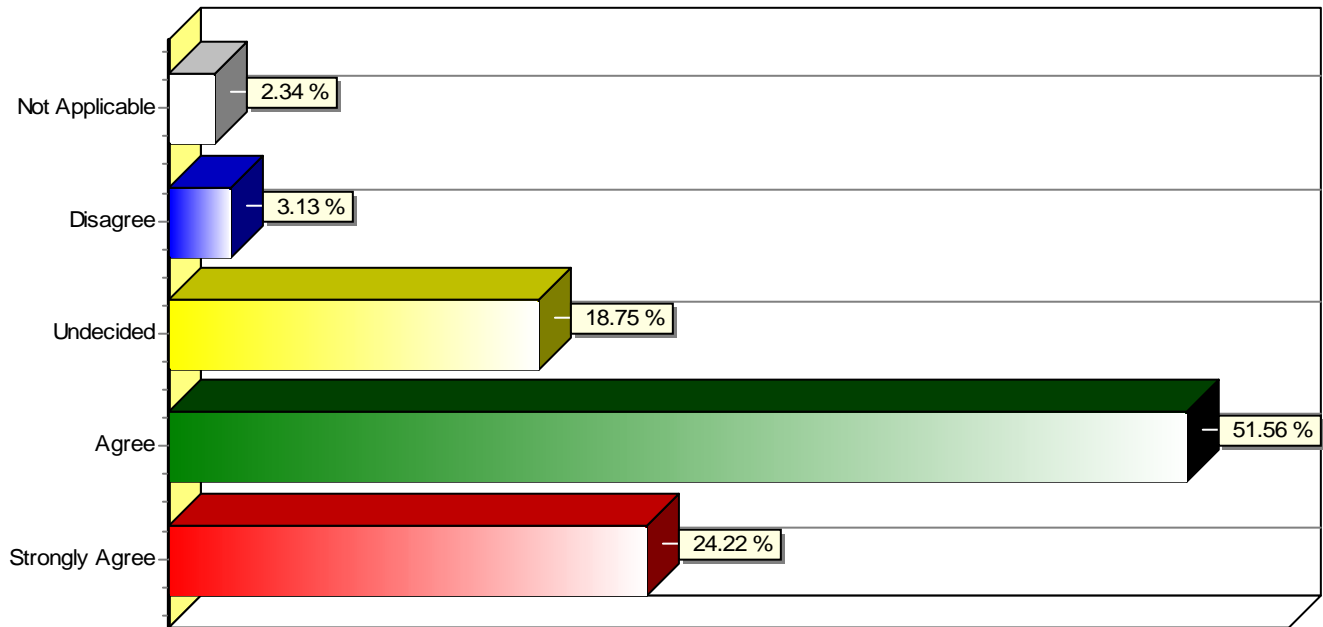


10. WNCC prepared me for further education

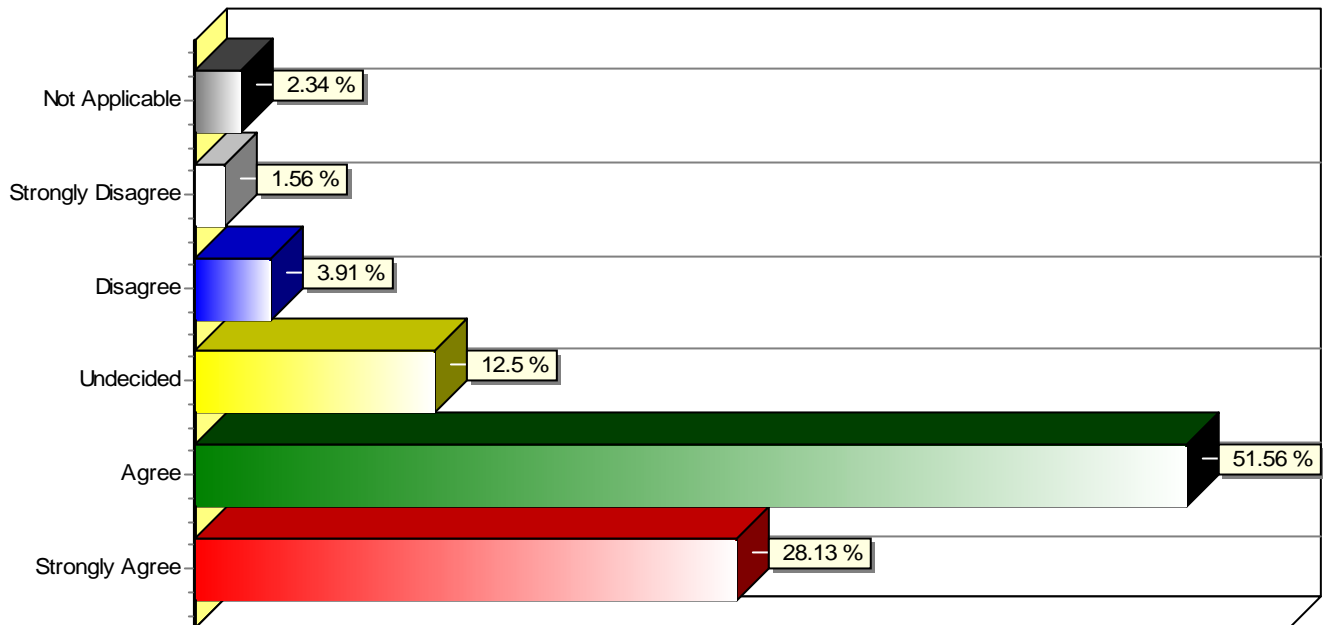


WNCC 2005 Recent Graduate Survey (Excludes Unanswered)

11. I better understand others' ideas through reading

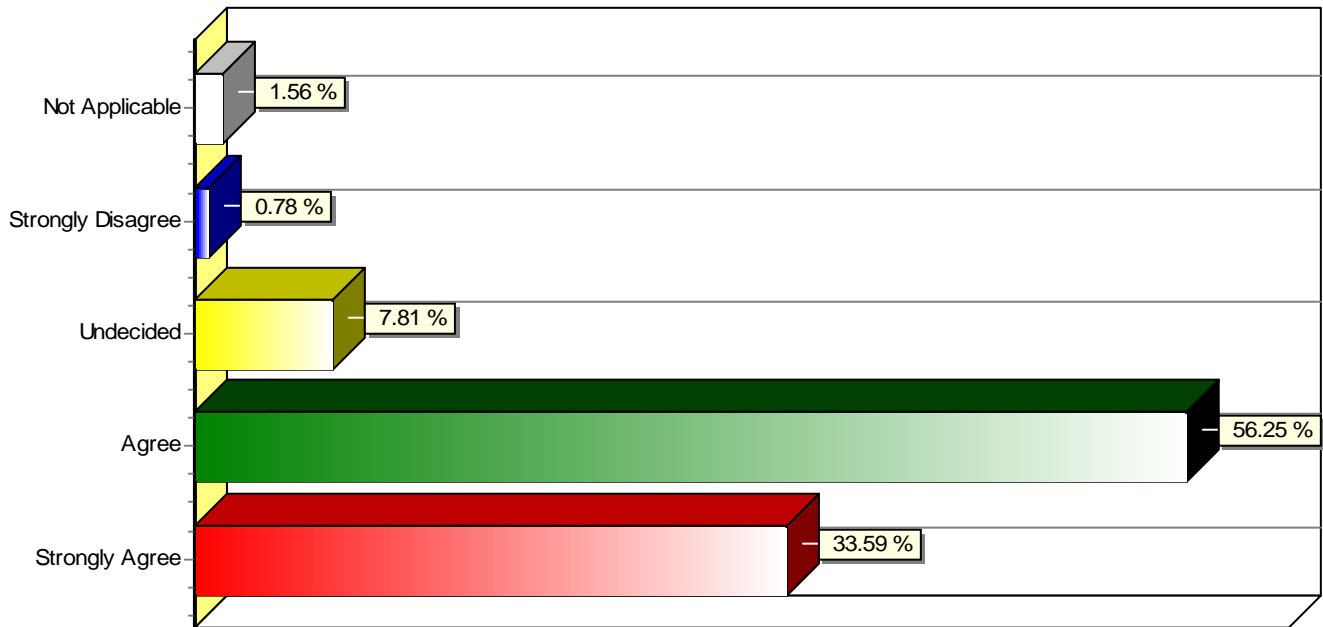


12. I better understand others' ideas through listening

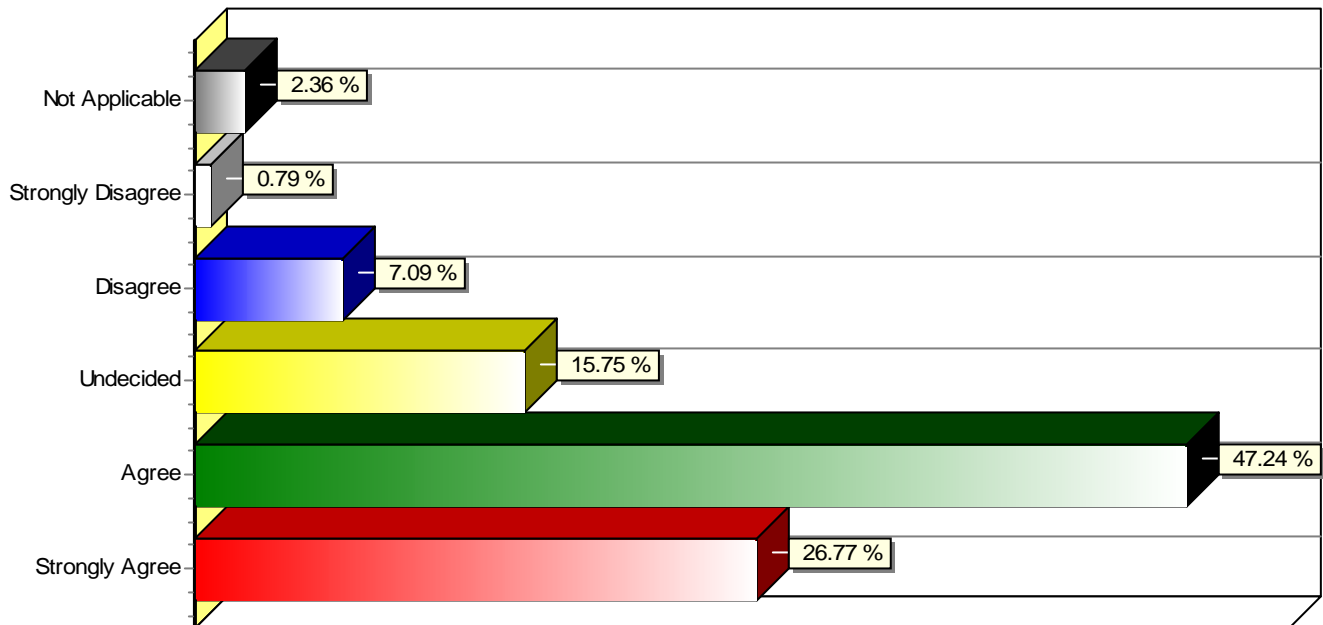


WNCC 2005 Recent Graduate Survey (Excludes Unanswered)

13. I improved my critical thinking skills

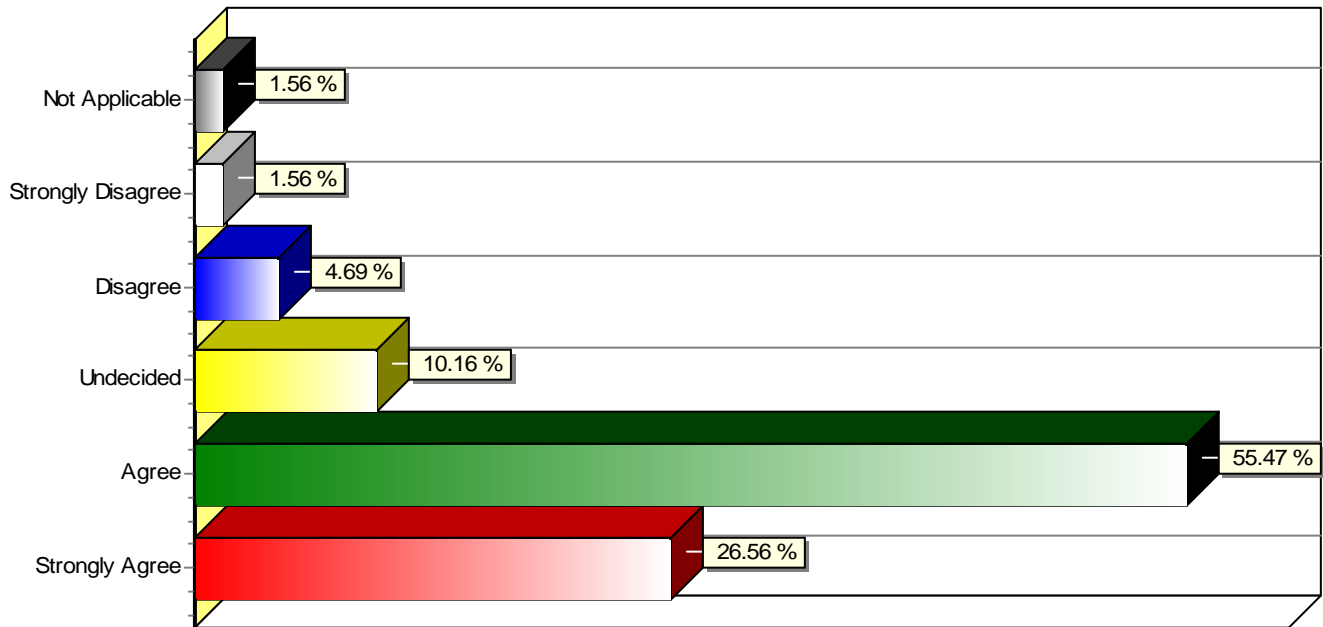


14. I developed the ability to express myself effectively through speaking

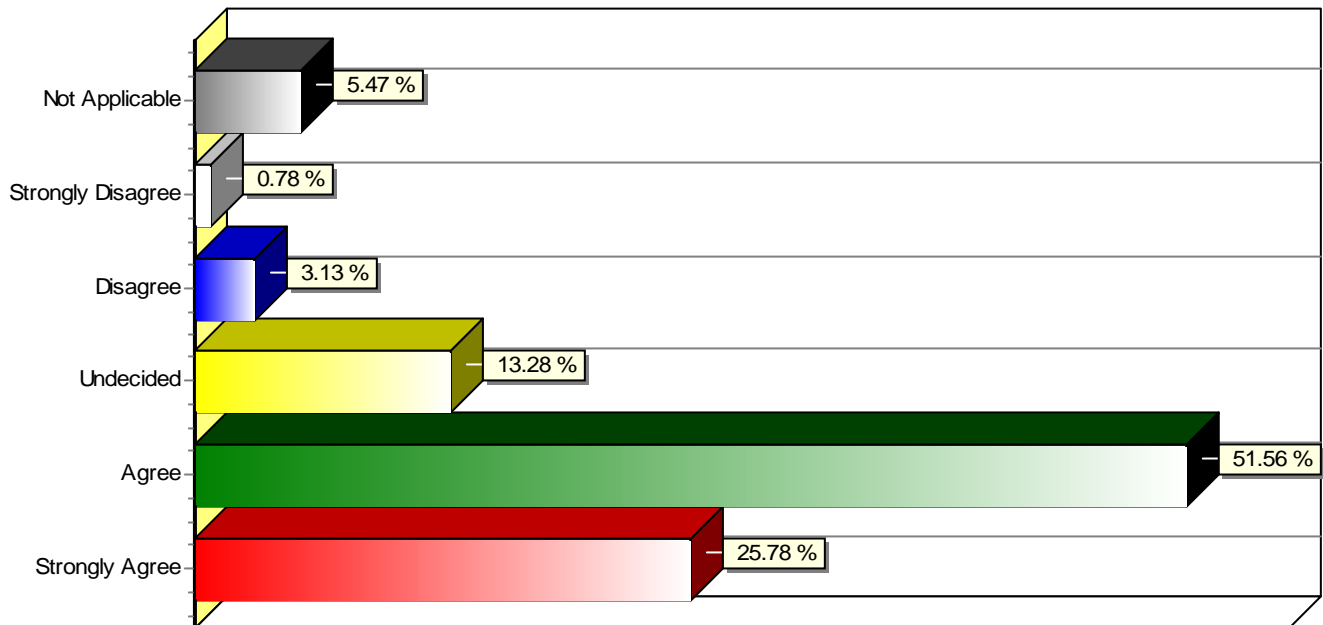


WNCC 2005 Recent Graduate Survey (Excludes Unanswered)

15. I developed the ability to write effectively

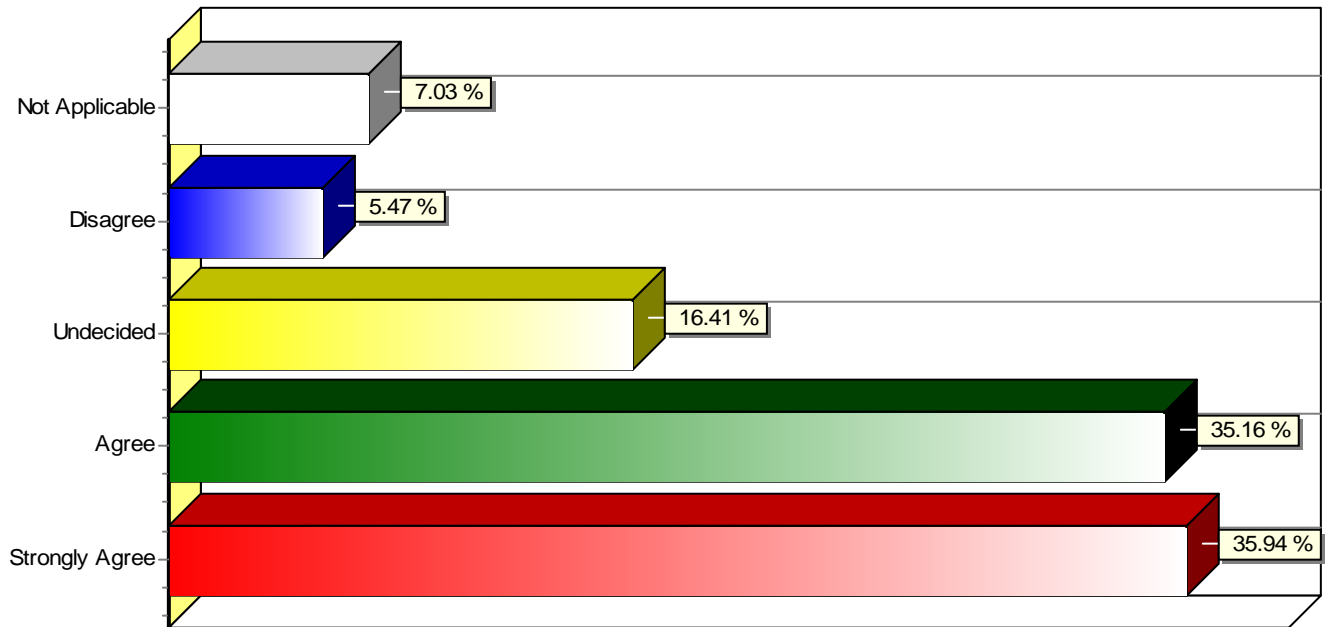


16. My ability to perform basic computations improved

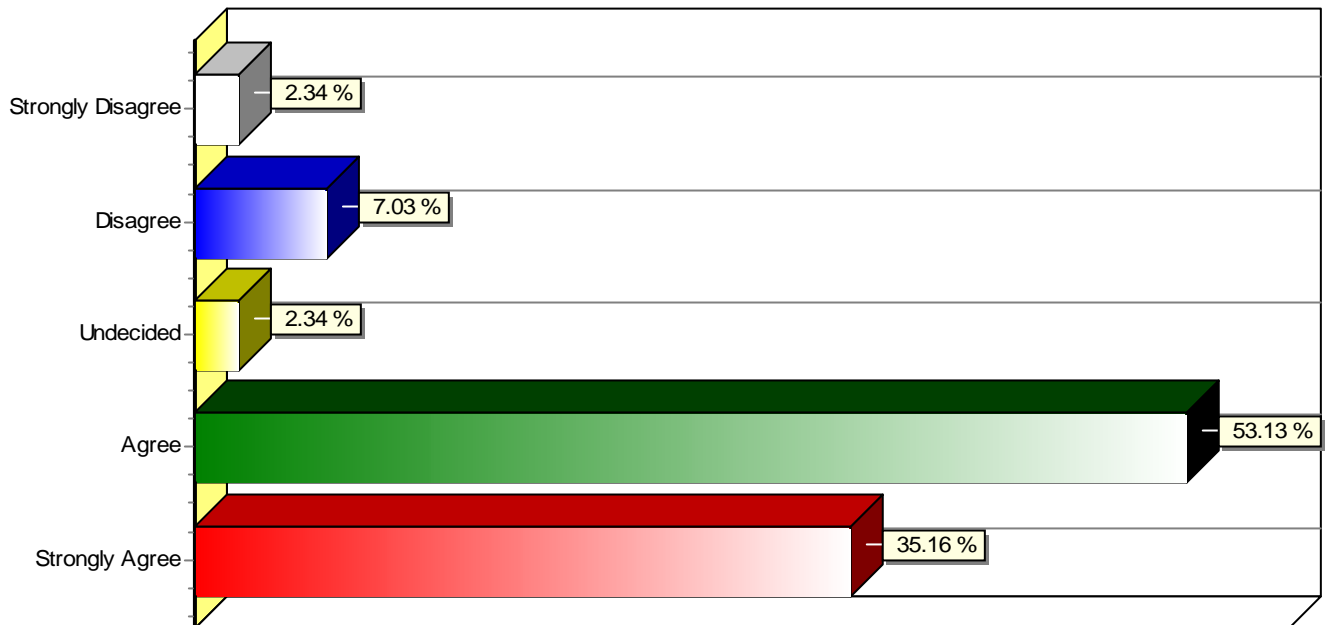


WNCC 2005 Recent Graduate Survey (Excludes Unanswered)

17. I learned to appreciate other cultures

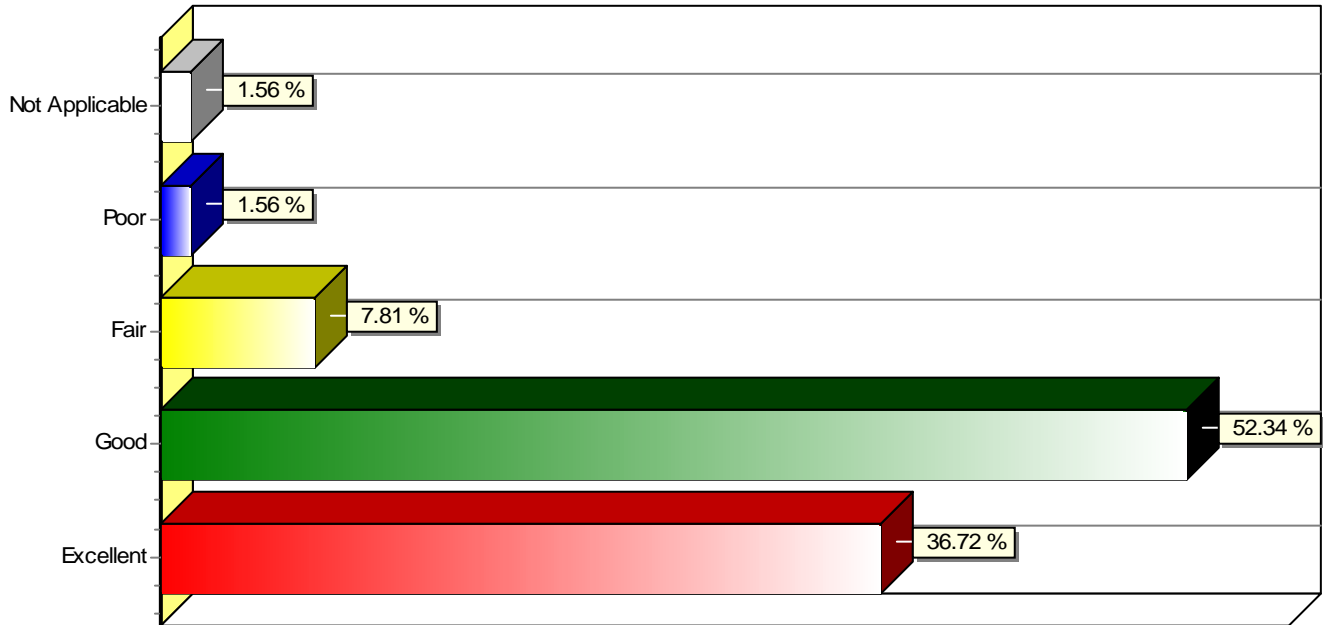


18. I felt academically challenged

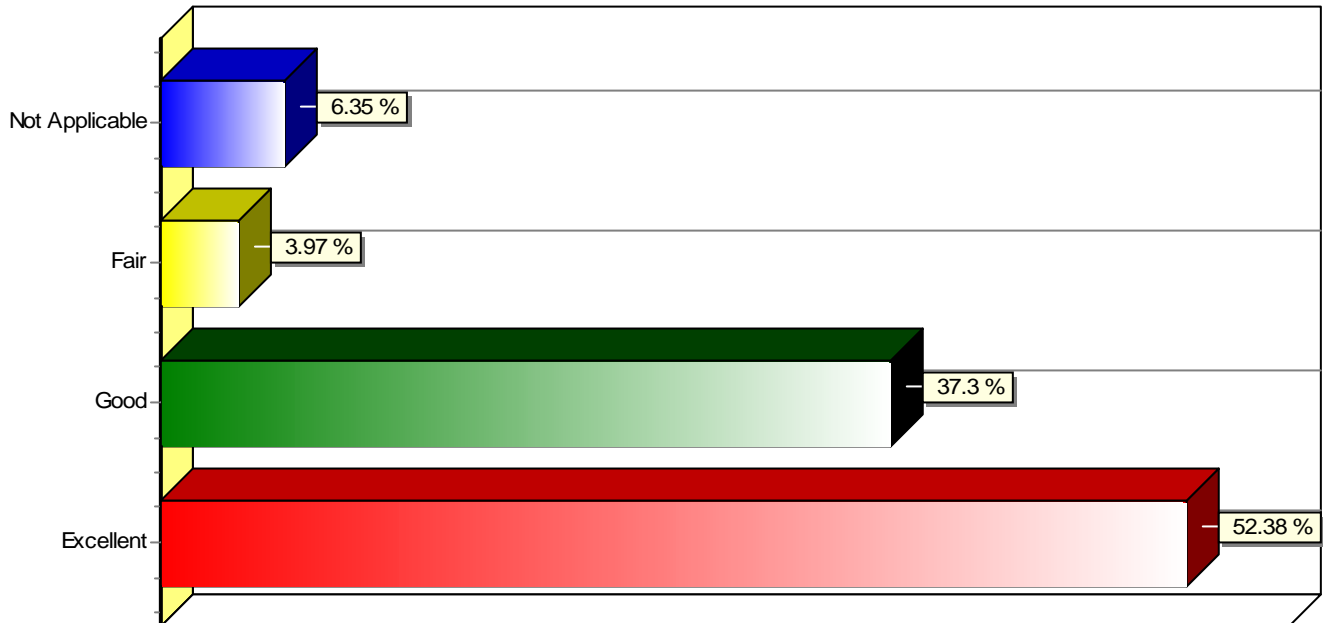


WNCC 2005 Recent Graduate Survey (Excludes Unanswered)

19. Admissions

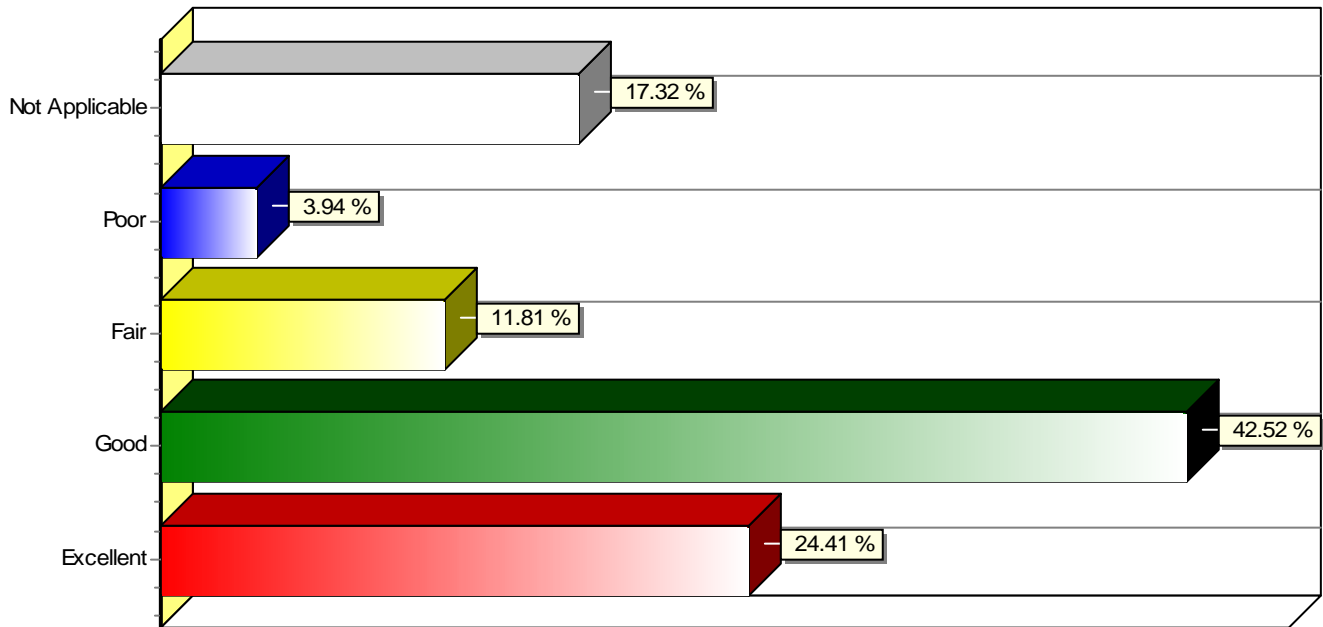


20. Web Registration

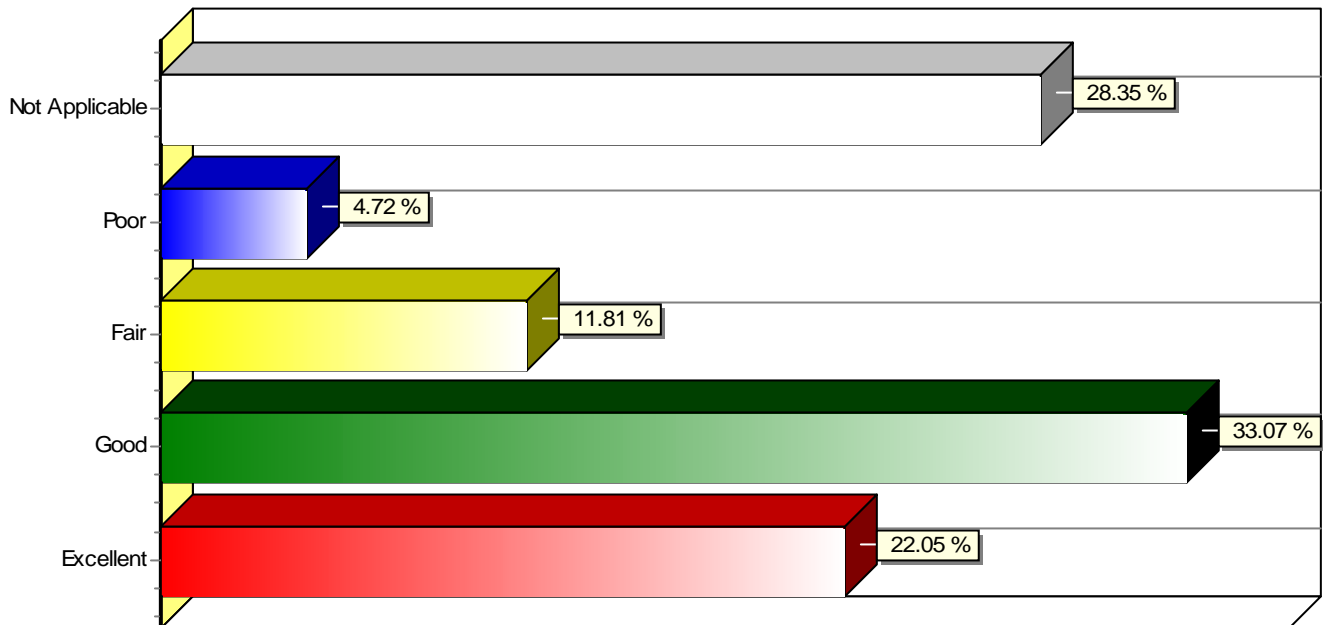


WNCC 2005 Recent Graduate Survey (Excludes Unanswered)

21. Business Office Services

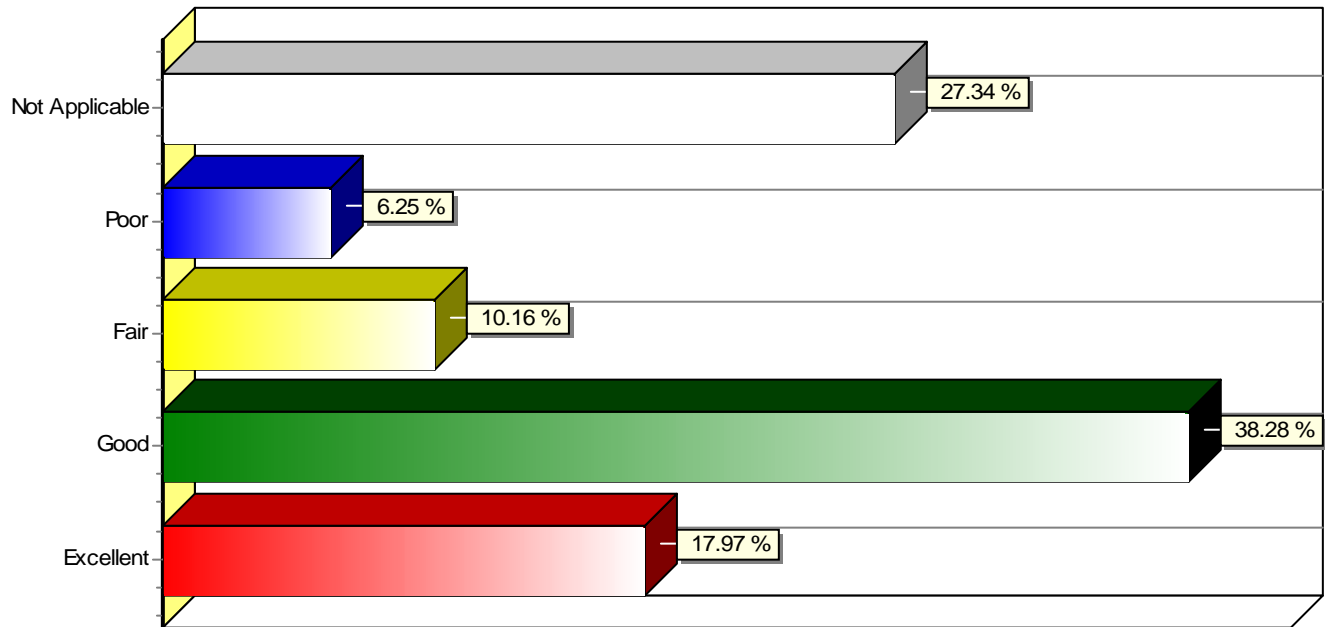


22. Academic Skills/Learning Center Services

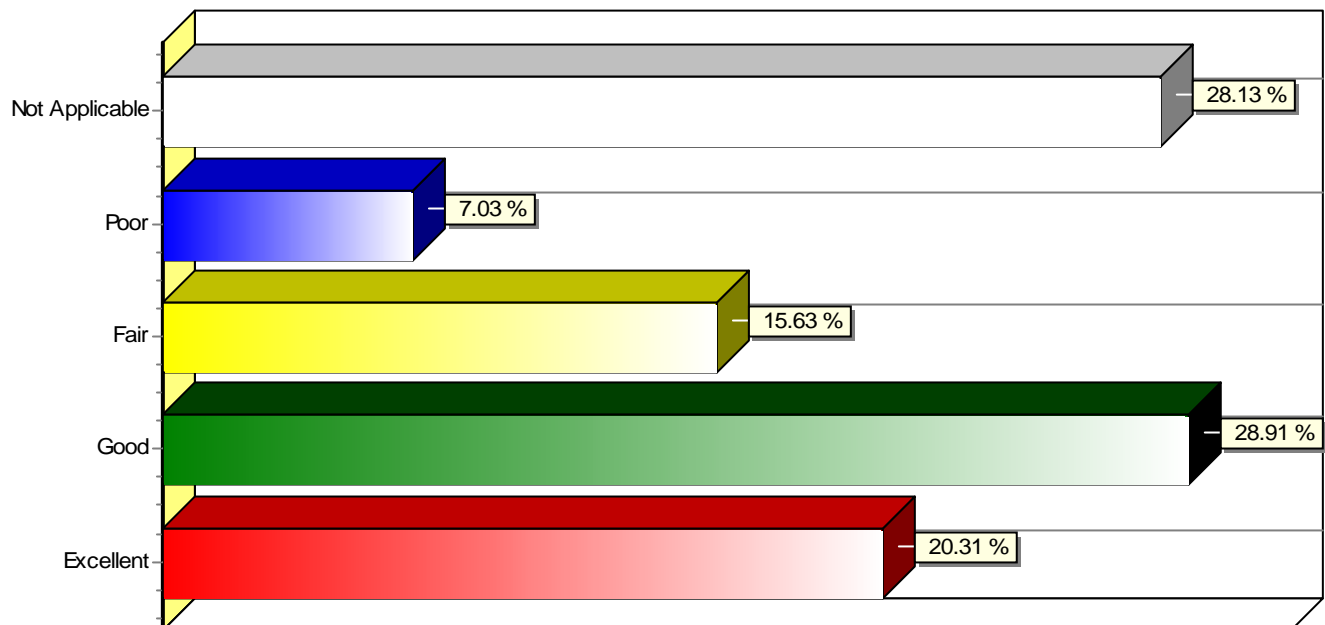


WNCC 2005 Recent Graduate Survey (Excludes Unanswered)

23. Student Academic Recognition

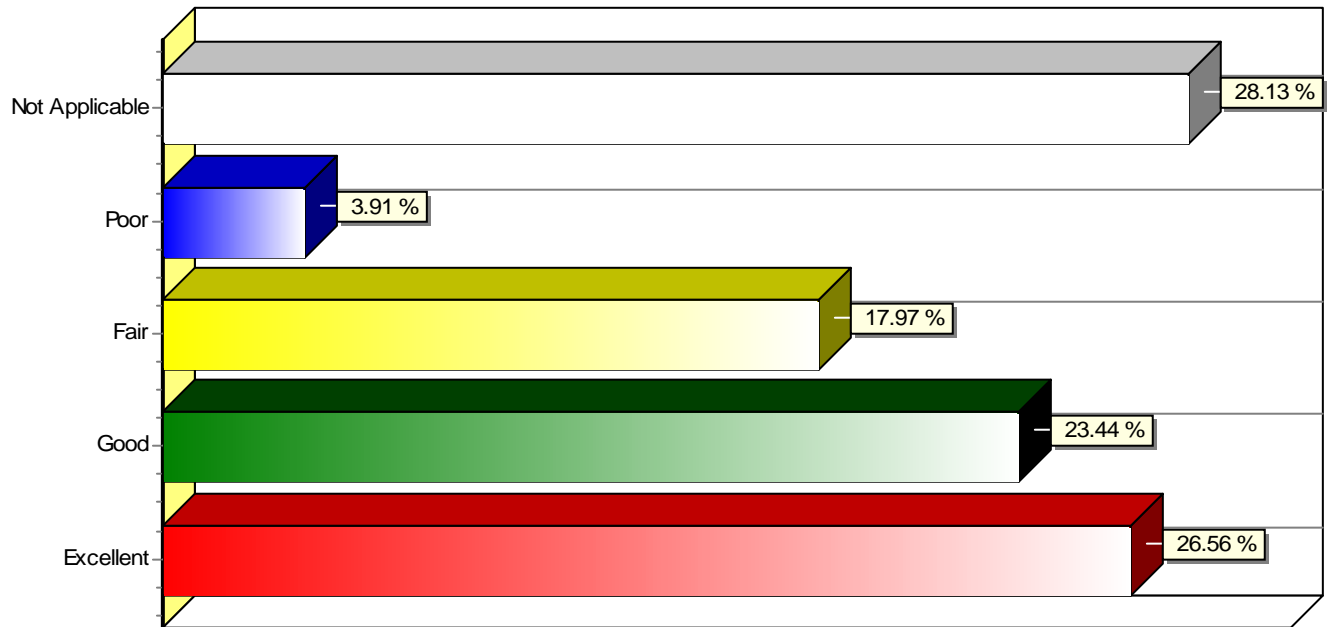


24. Promotion of Cultural Diversity

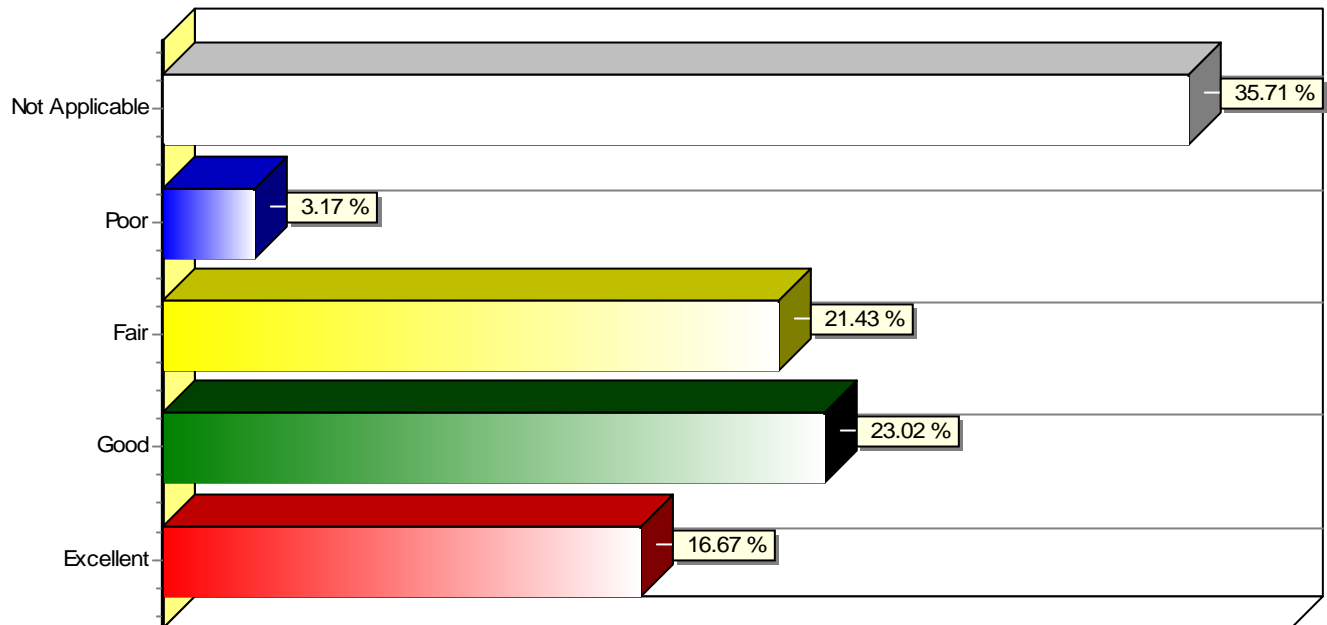


WNCC 2005 Recent Graduate Survey (Excludes Unanswered)

25. Financial Aid Services

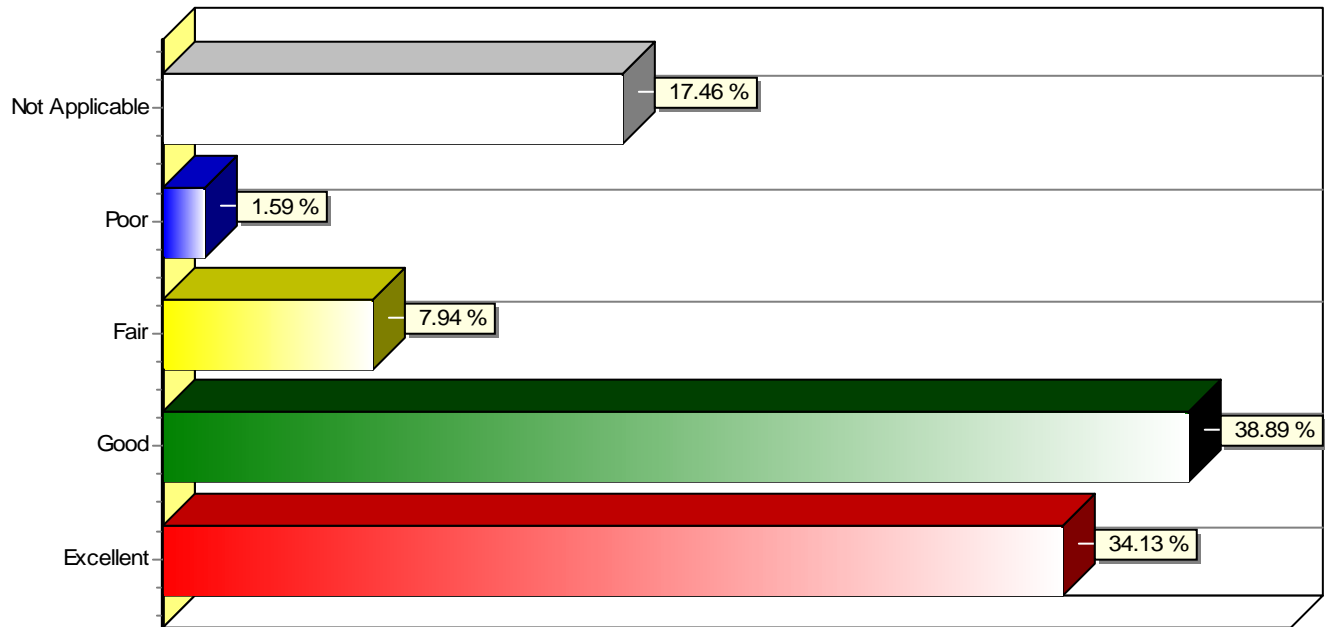


26. Sedway Cafe (CC Campus)

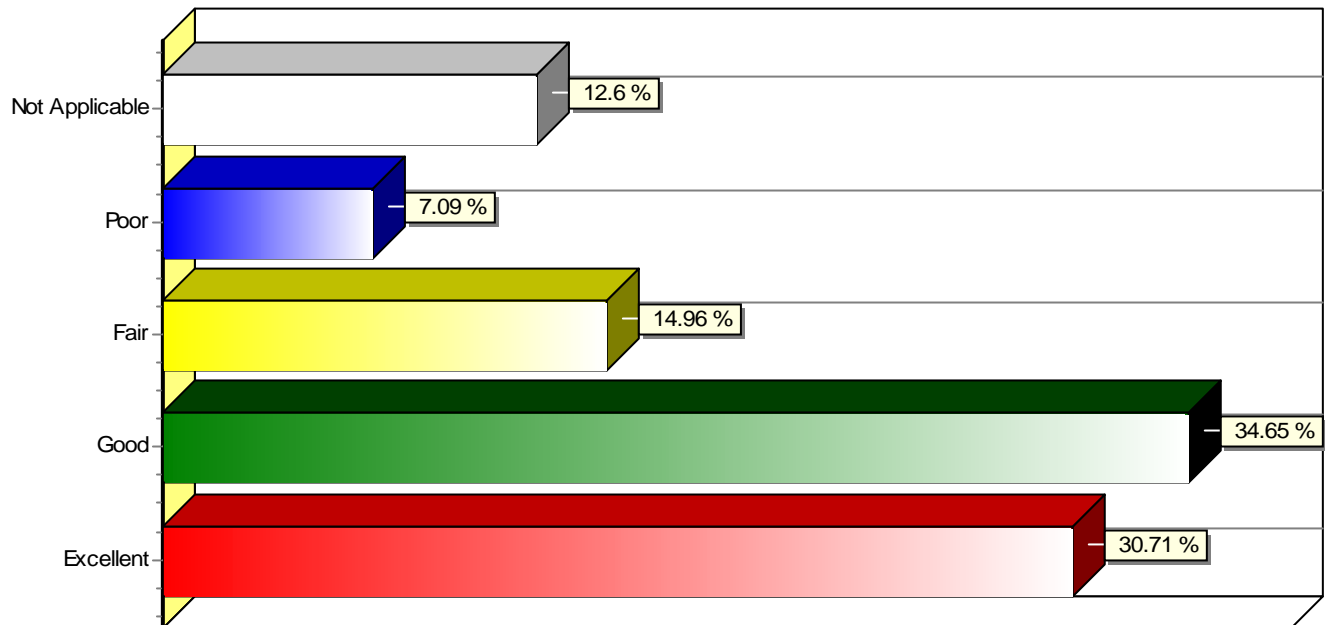


WNCC 2005 Recent Graduate Survey (Excludes Unanswered)

27. Library Services

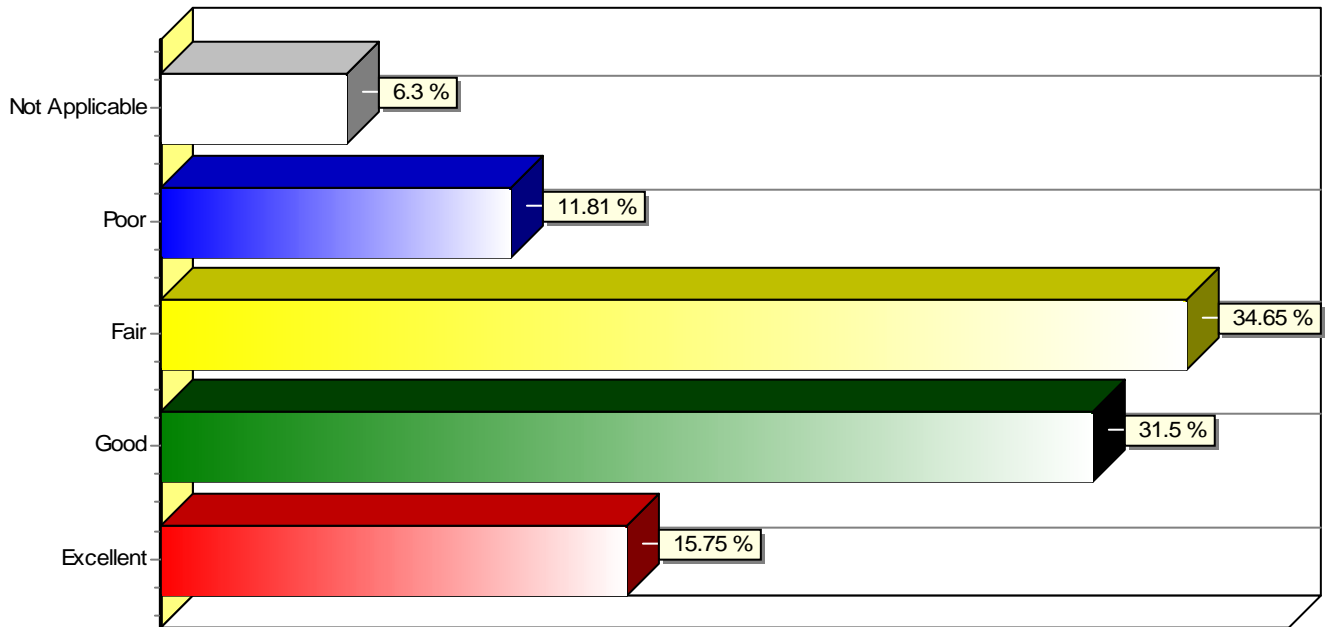


28. Counseling Services

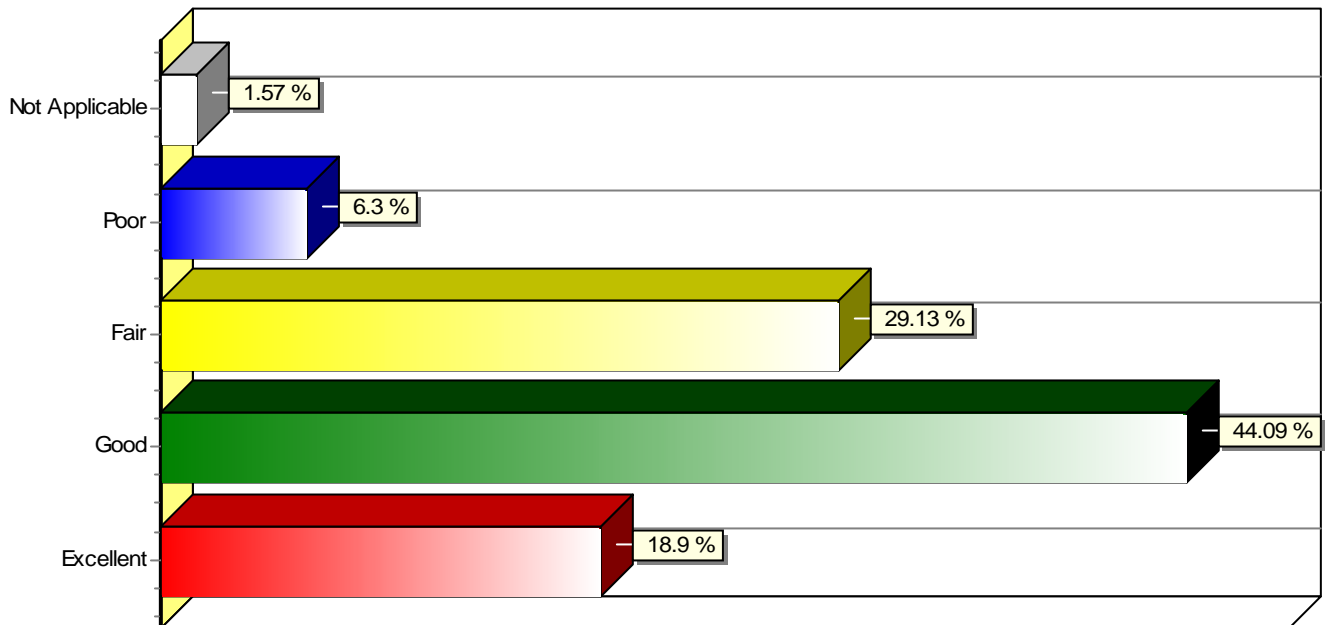


WNCC 2005 Recent Graduate Survey (Excludes Unanswered)

29. Parking

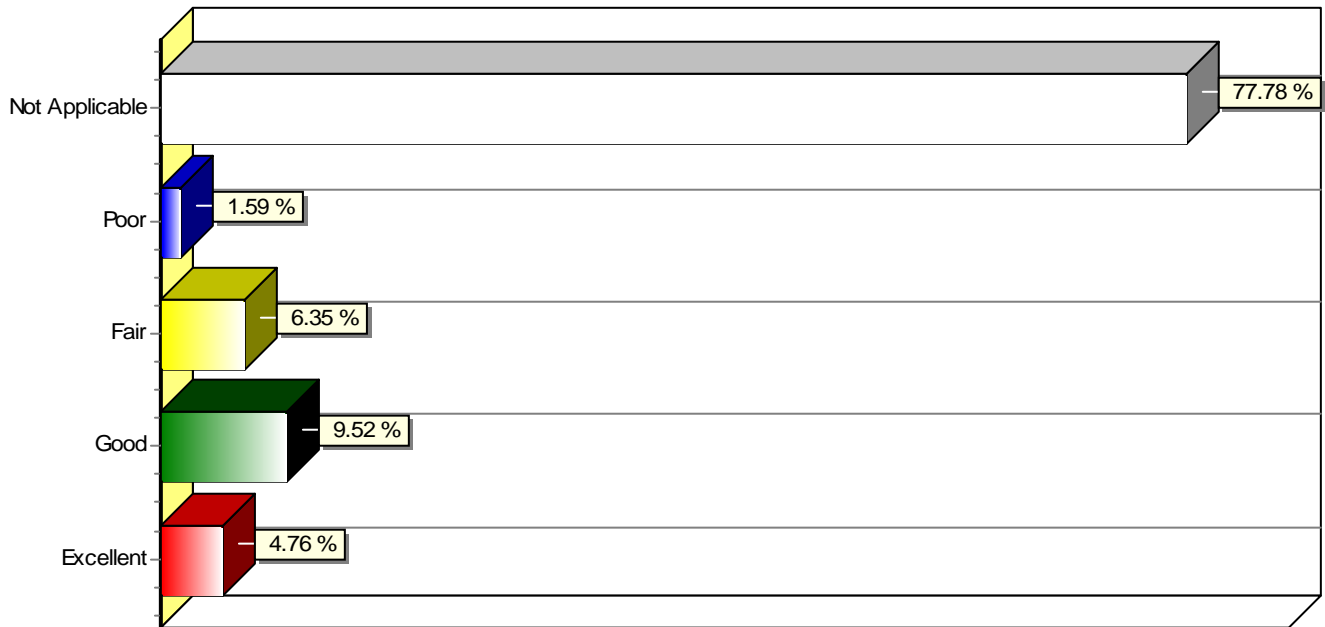


30. Bookstore

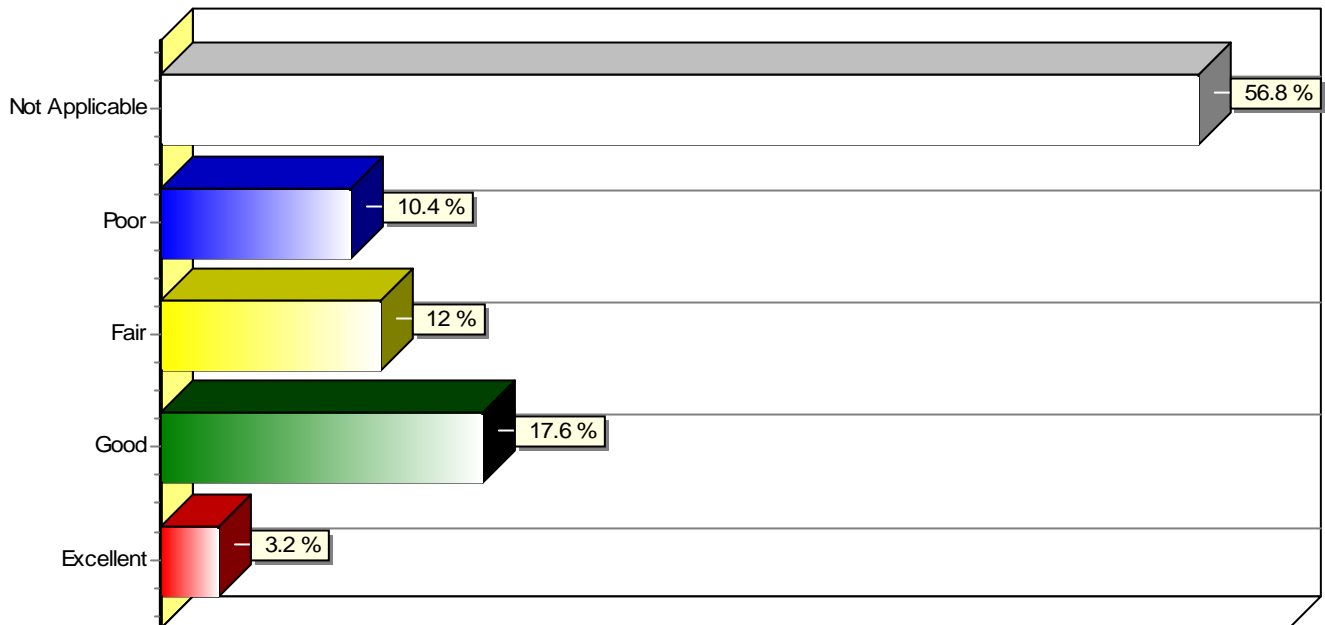


WNCC 2005 Recent Graduate Survey (Excludes Unanswered)

31. Disabled Student Services

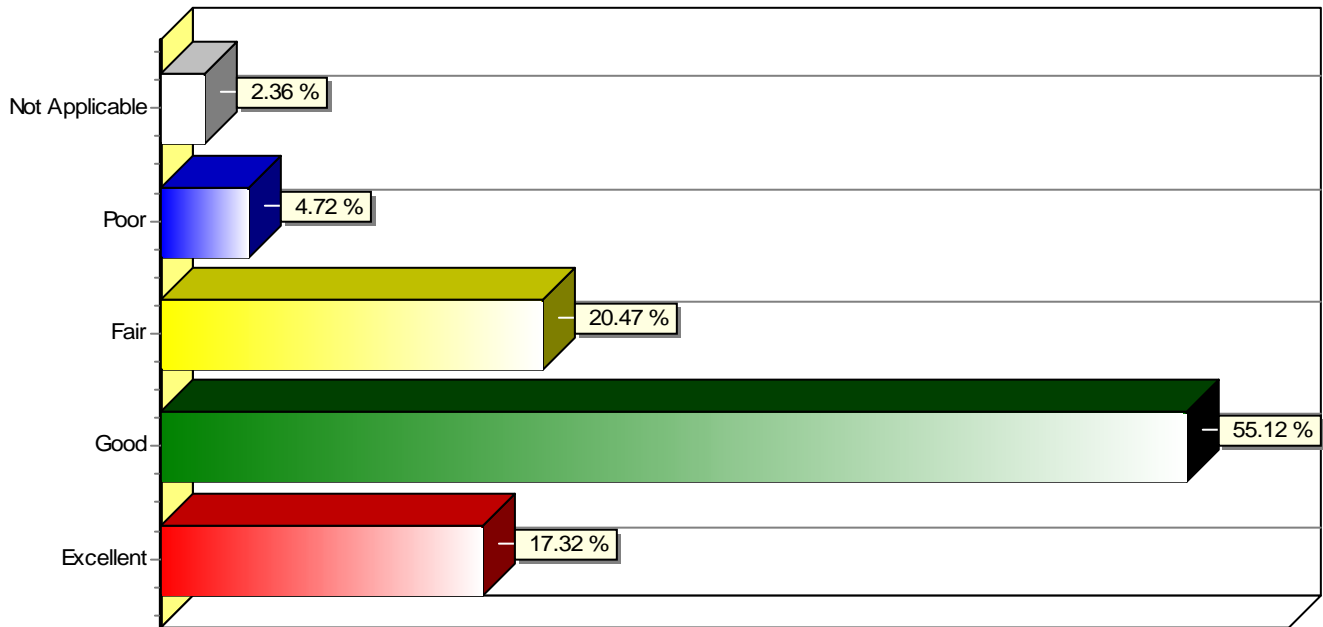


32. Recreational Facilities

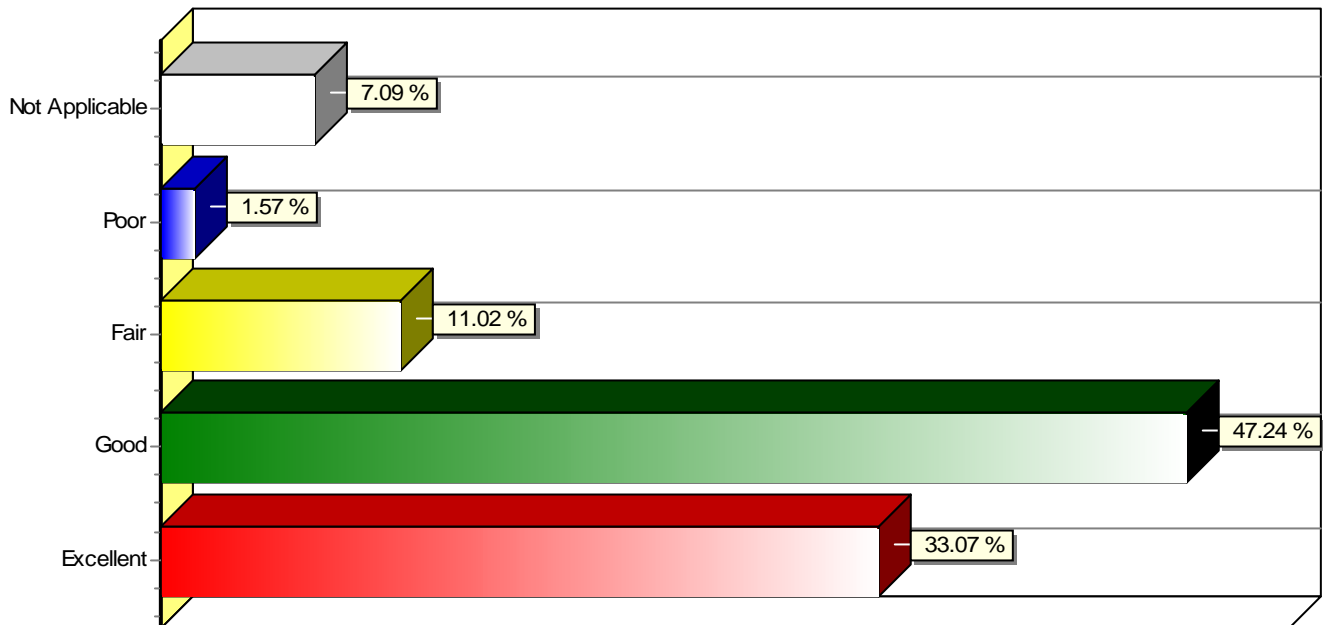


WNCC 2005 Recent Graduate Survey (Excludes Unanswered)

33. Overall Classroom Conditions

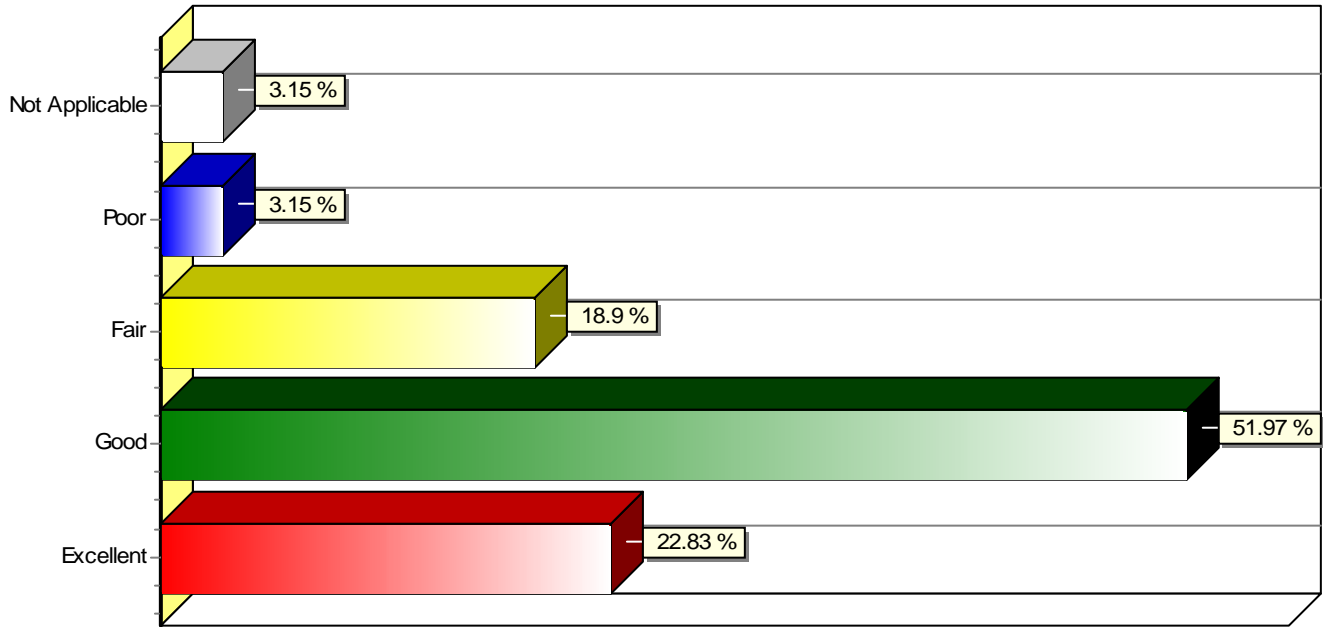


34. Maintenance of College Grounds

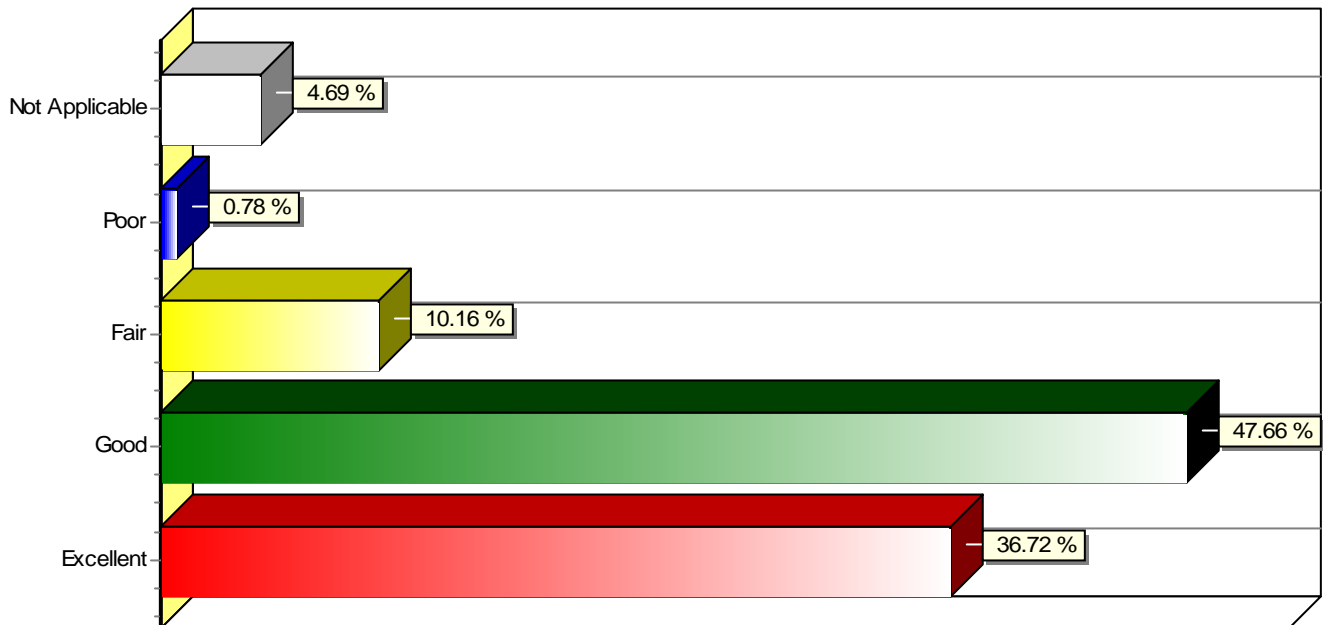


WNCC 2005 Recent Graduate Survey (Excludes Unanswered)

35. Classroom Equipment In Good Condition

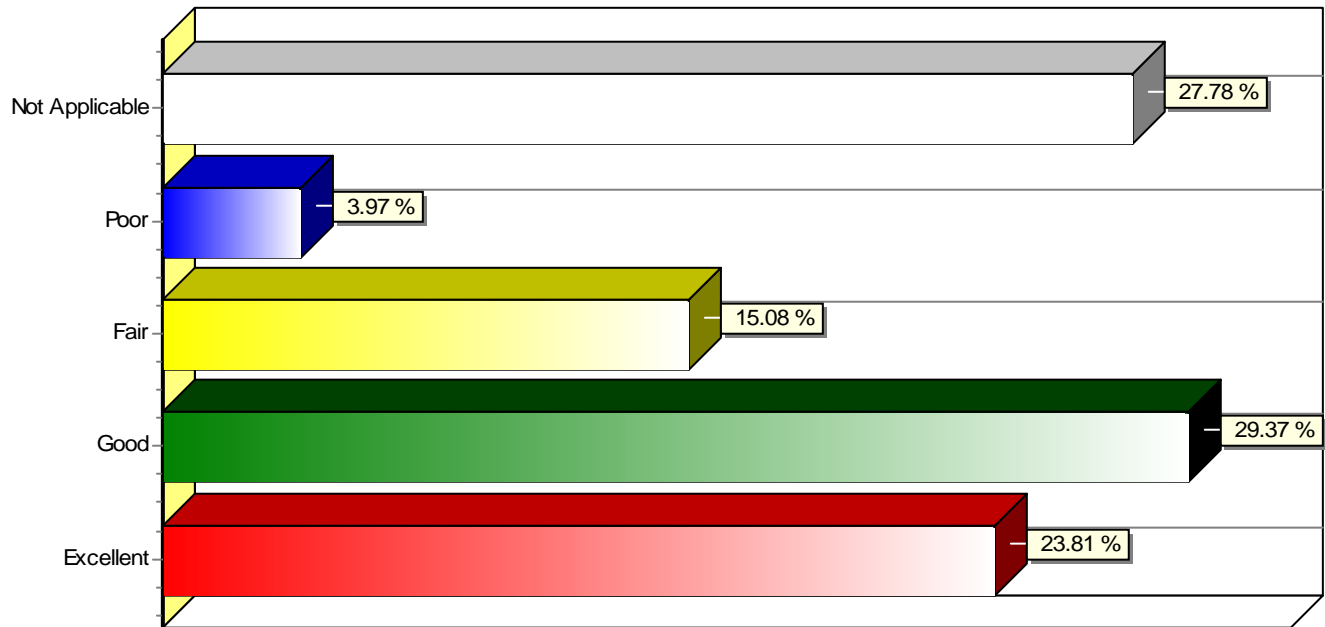


36. WNCC Web Site

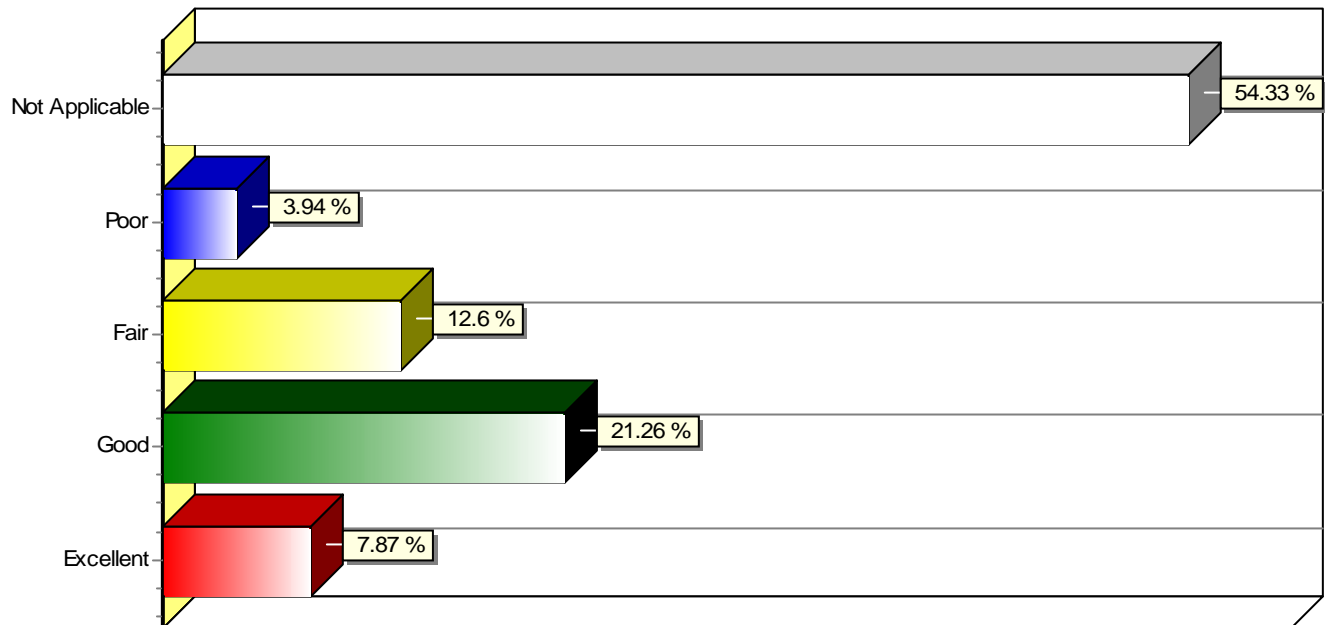


WNCC 2005 Recent Graduate Survey (Excludes Unanswered)

37. Faculty Advising in Department

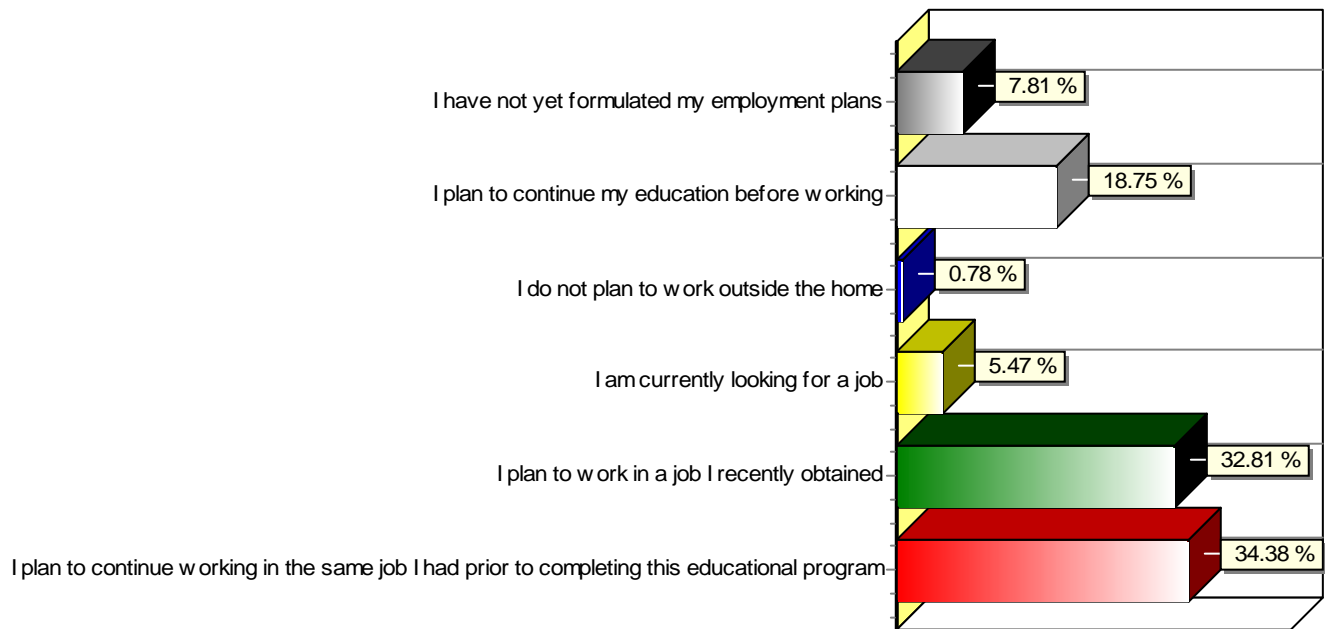


38. United Students Association (Student Government)

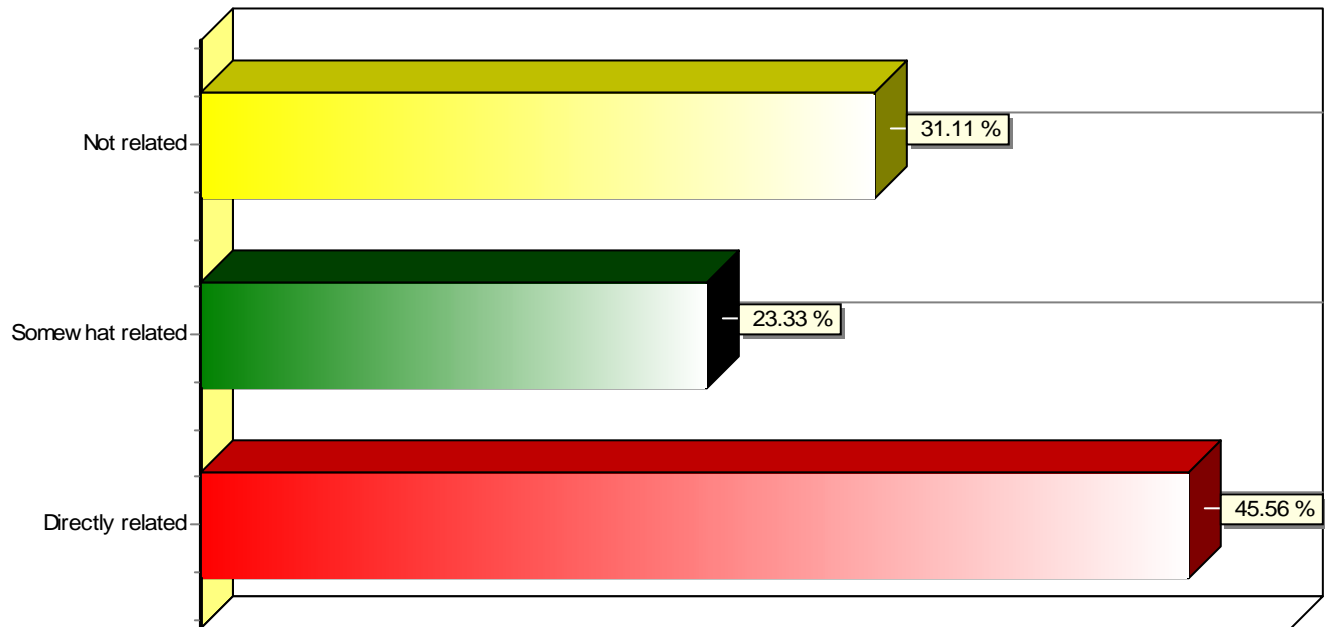


WNCC 2005 Recent Graduate Survey (Excludes Unanswered)

39. What are your immediate plans for employment? (CHOOSE ONLY ONE.)

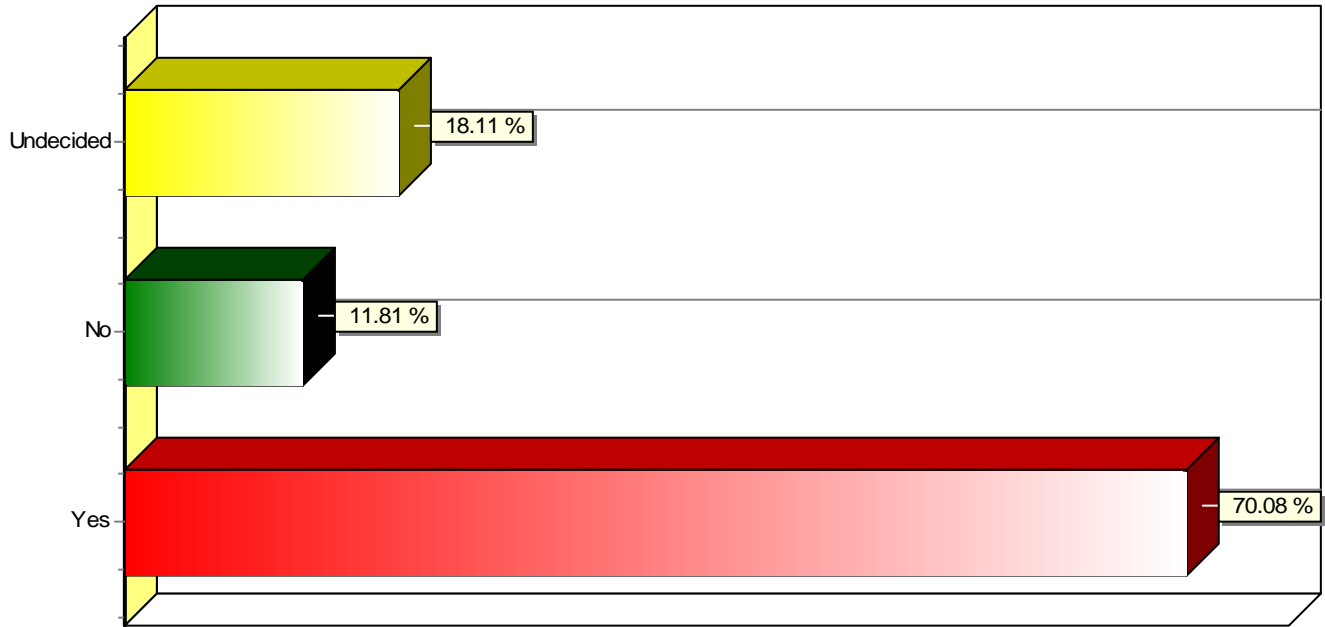


40. If you indicated in #39 that you currently have or will be starting a new job, to what extent is it related to your major or area of study at WNCC?

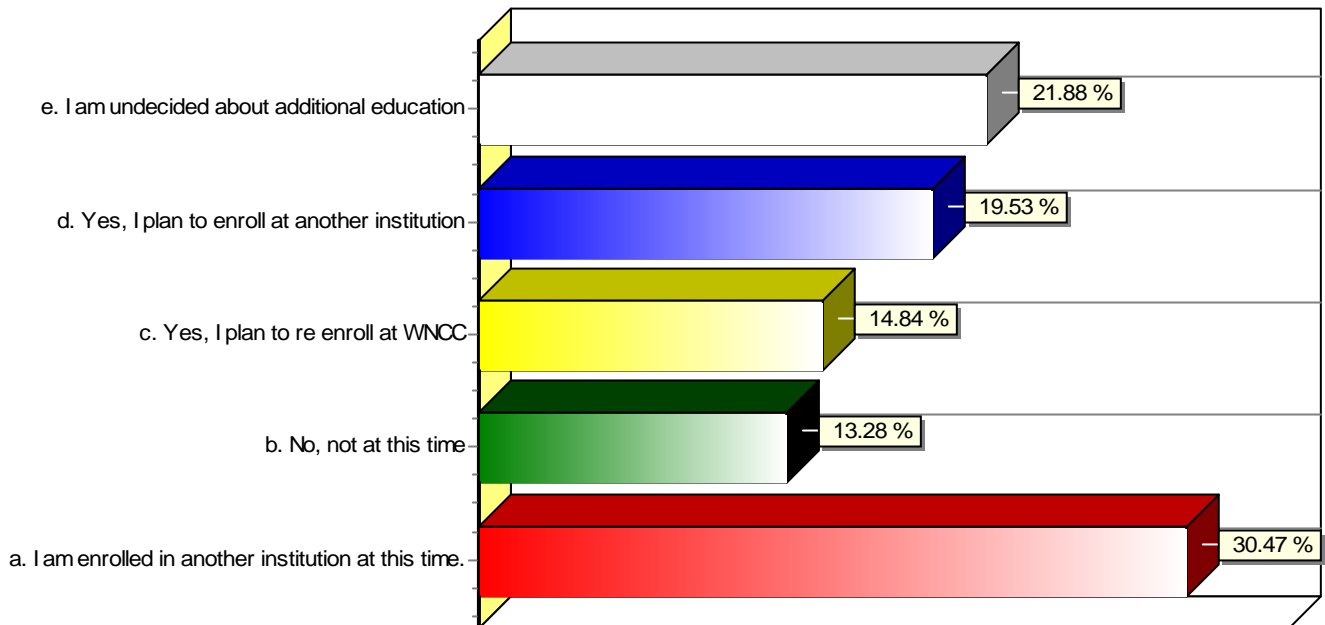


WNCC 2005 Recent Graduate Survey (Excludes Unanswered)

41. Do you intend to stay in Nevada?

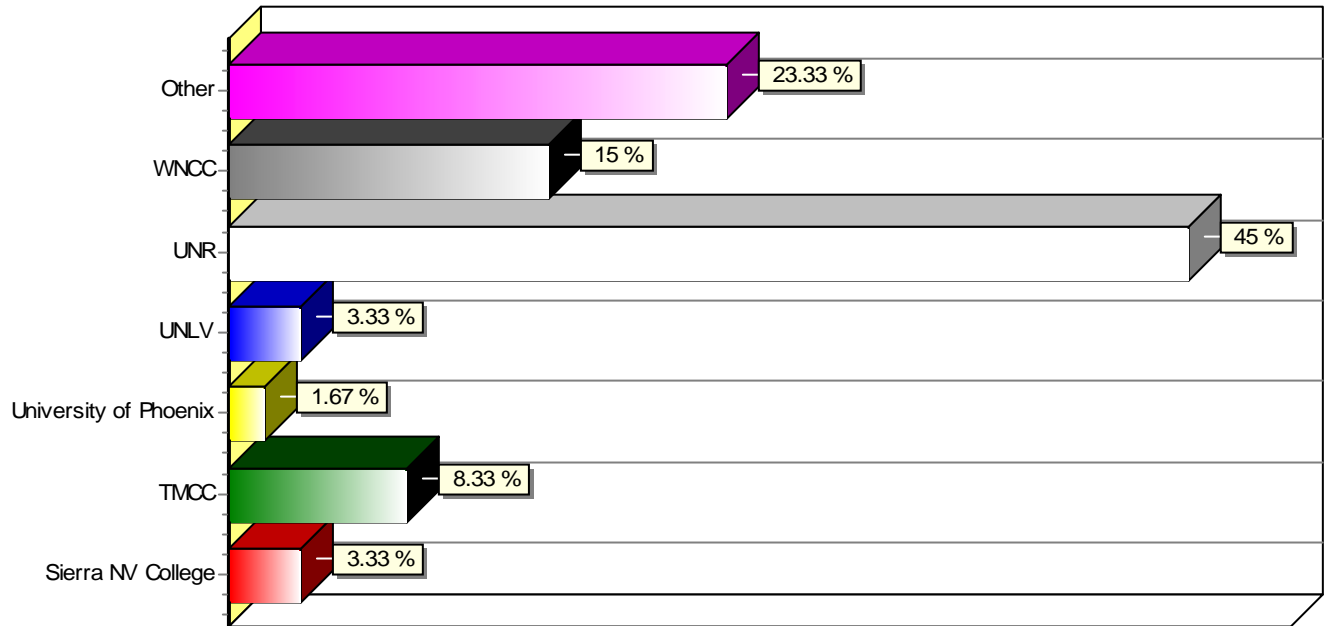


42. Do you currently have plans for additional education? (CHOOSE ONLY ONE.)

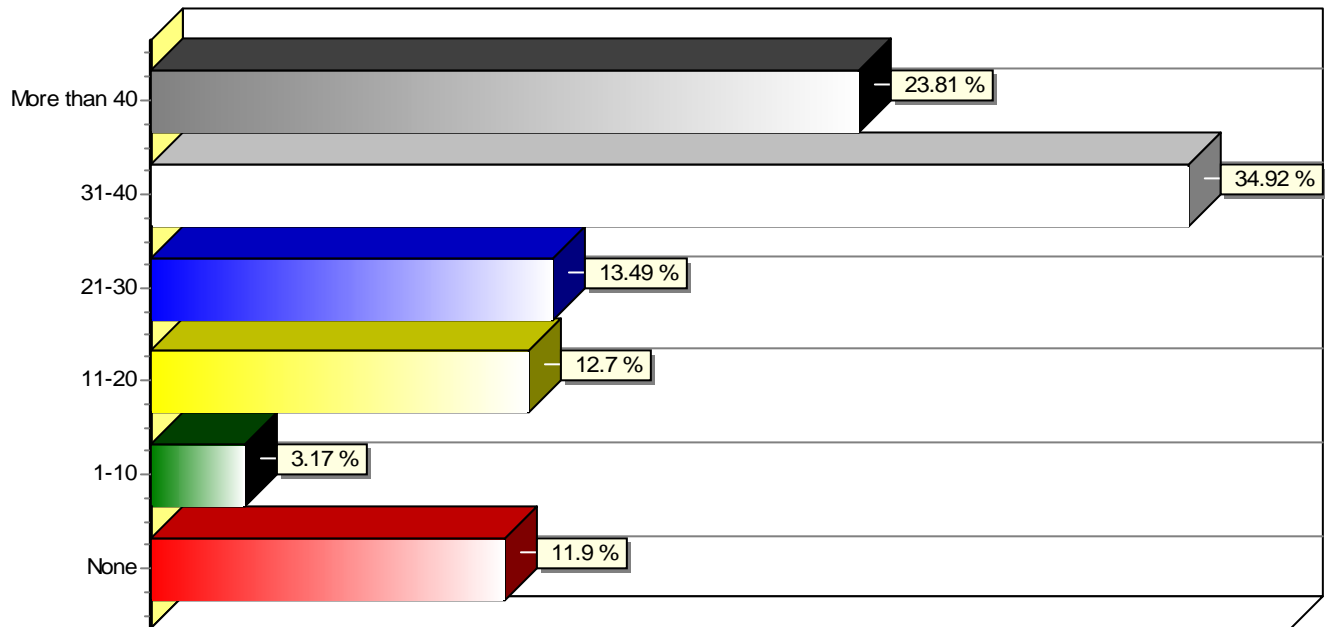


WNCC 2005 Recent Graduate Survey (Excludes Unanswered)

43. If you are enrolled in another institution at this time, please indicate the name of institution you are attending. (CHOOSE ONLY ONE.)

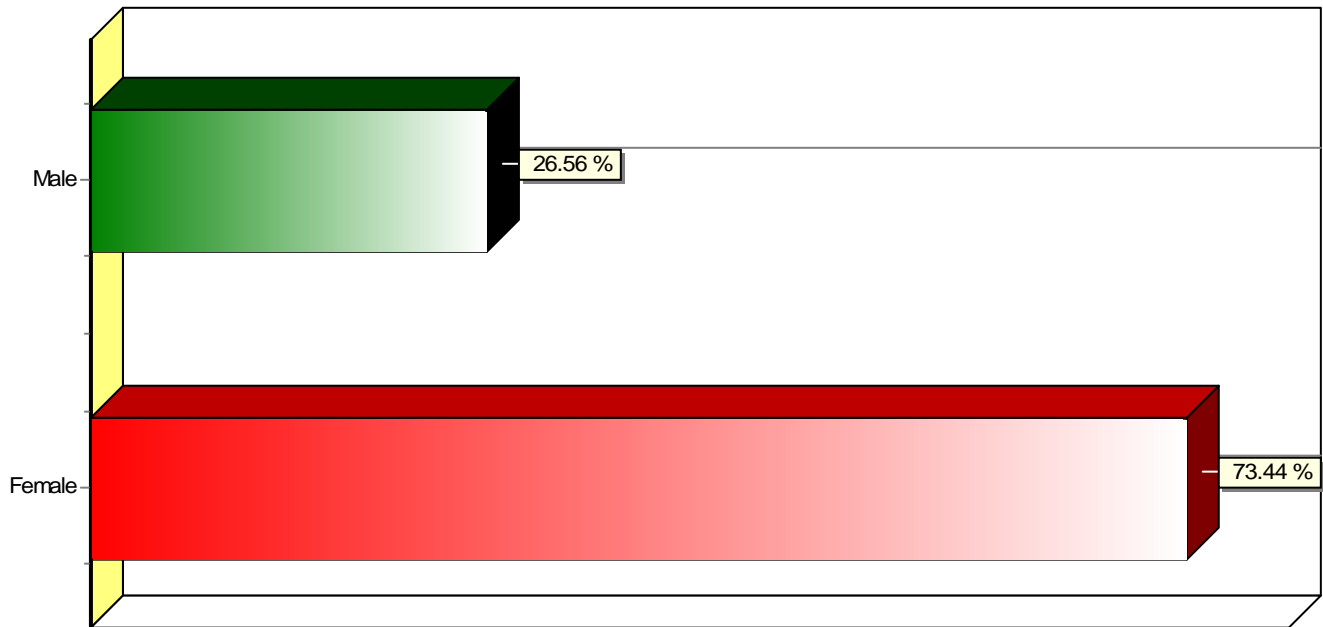


44. Average number of hours employed (paying job) per week during the past year.

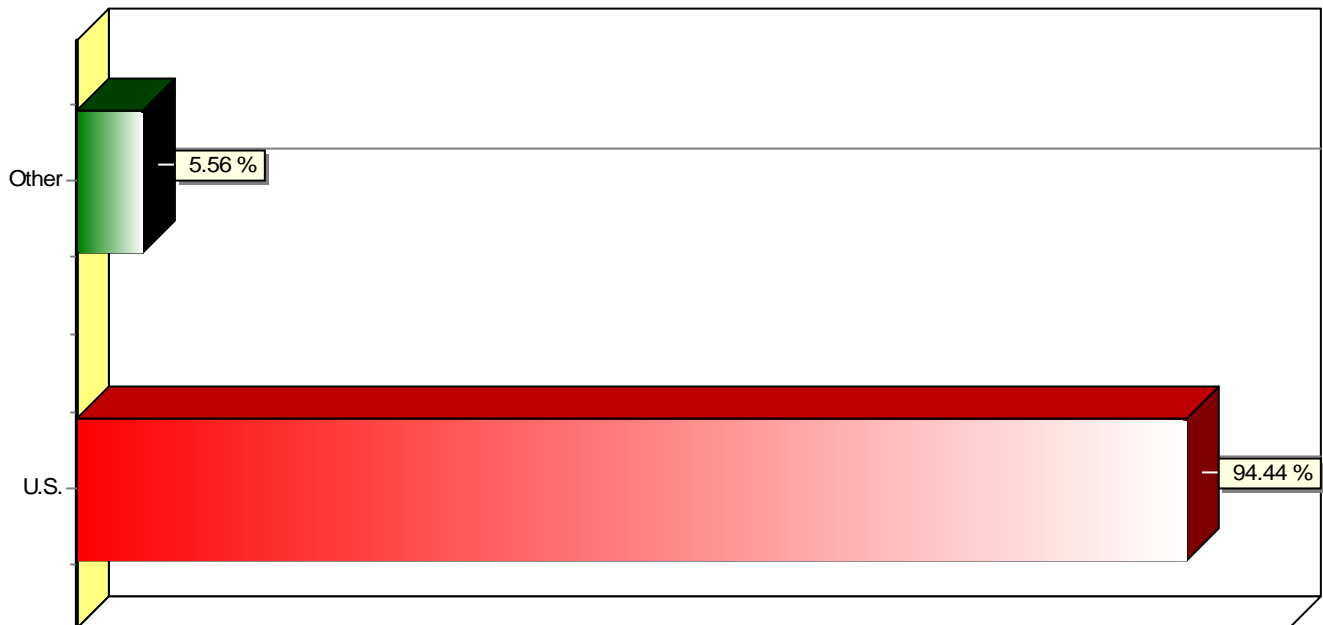


WNCC 2005 Recent Graduate Survey (Excludes Unanswered)

45. Gender

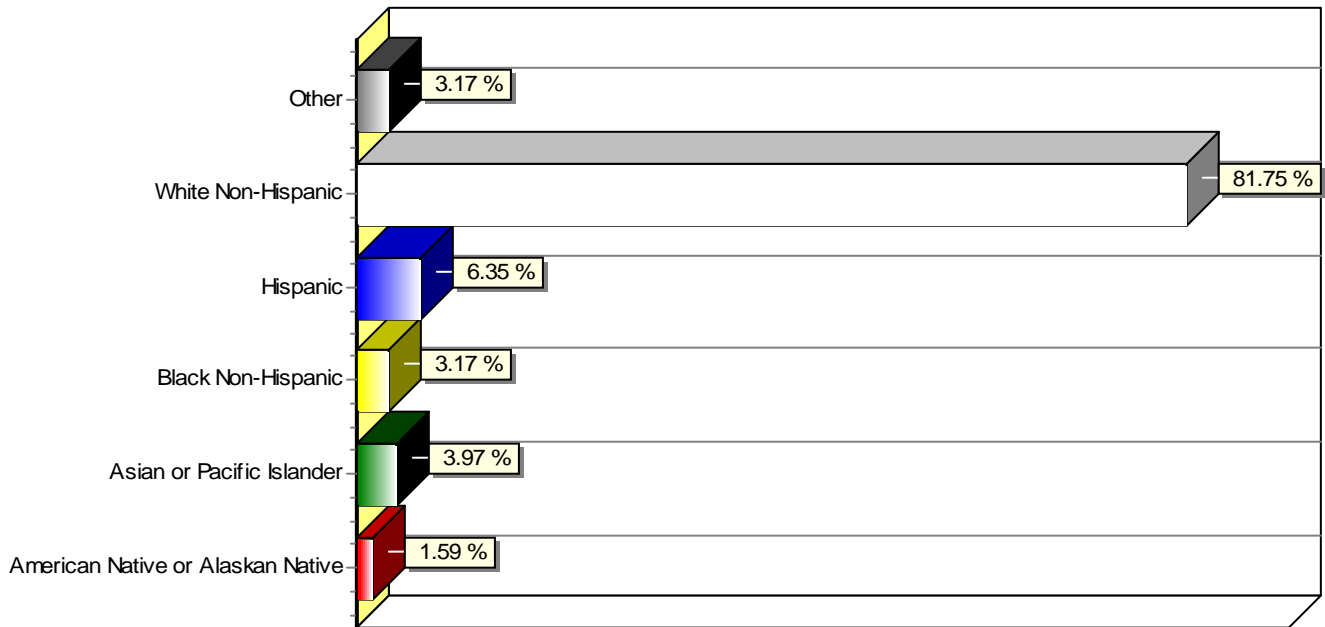


46. Citizenship



WNCC 2005 Recent Graduate Survey (Excludes Unanswered)

47. Ethnicity (CHOOSE ONLY ONE.)



48. Current Age

