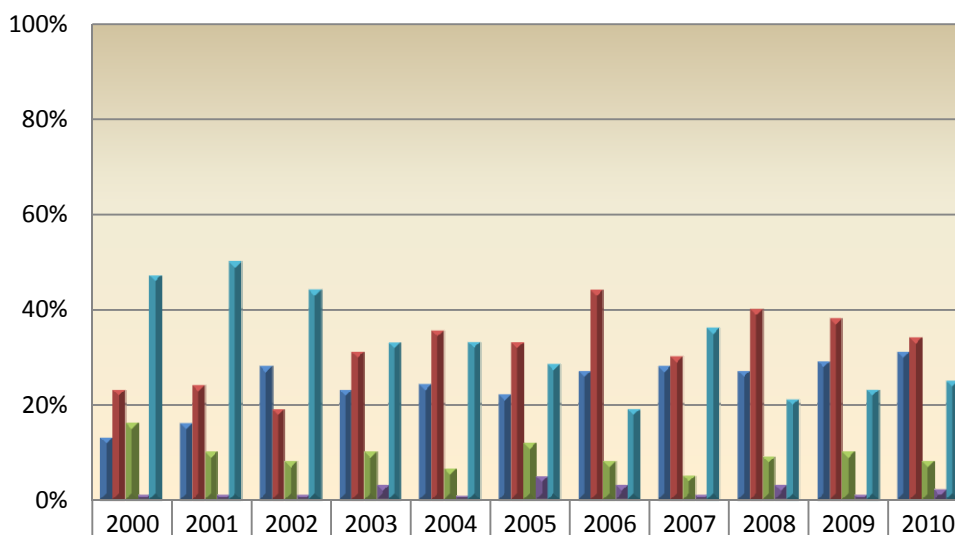
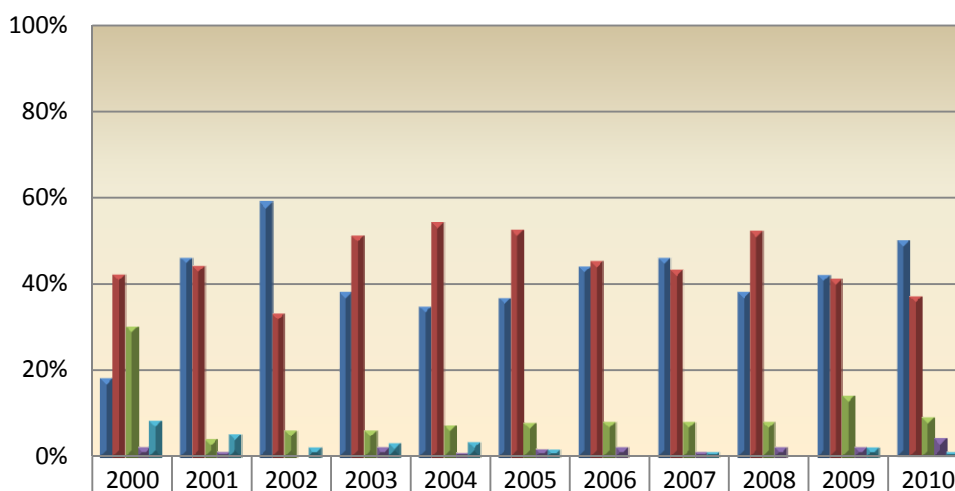


### Academic Skills/Learning Center Services/Tutoring



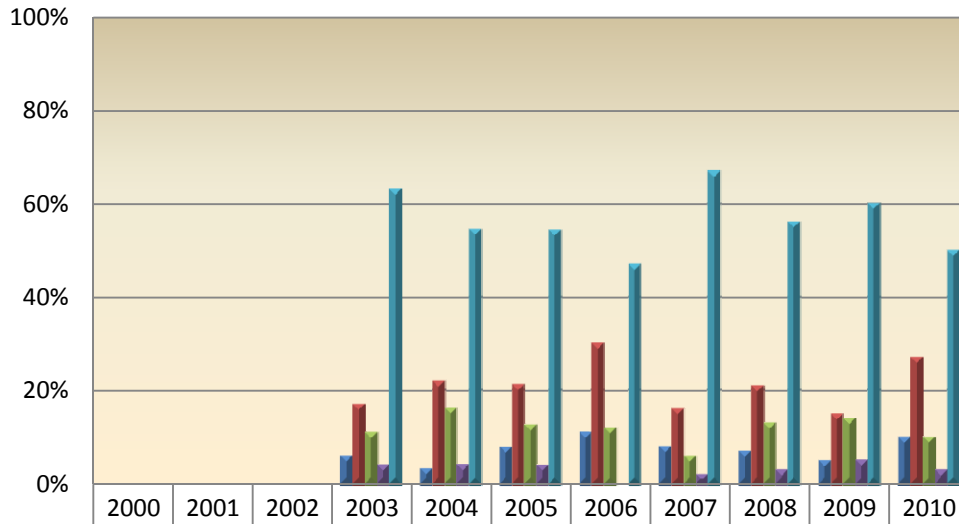
	2000	2001	2002	2003	2004	2005	2006	2007	2008	2009	2010
Excellent	13%	16%	28%	23%	24%	22%	27%	28%	27%	29%	31%
Good/Above Avg.	23%	24%	19%	31%	35%	33%	44%	30%	40%	38%	34%
Fair/Average	16%	10%	8%	10%	6%	12%	8%	5%	9%	10%	8%
Poor/Below Avg	1%	1%	1%	3%	1%	5%	3%	1%	3%	1%	2%
No Response/No Opinion/NA	47%	50%	44%	33%	33%	28%	19%	36%	21%	23%	25%

### Admissions -- Registration Process -- Admissions & Records Services



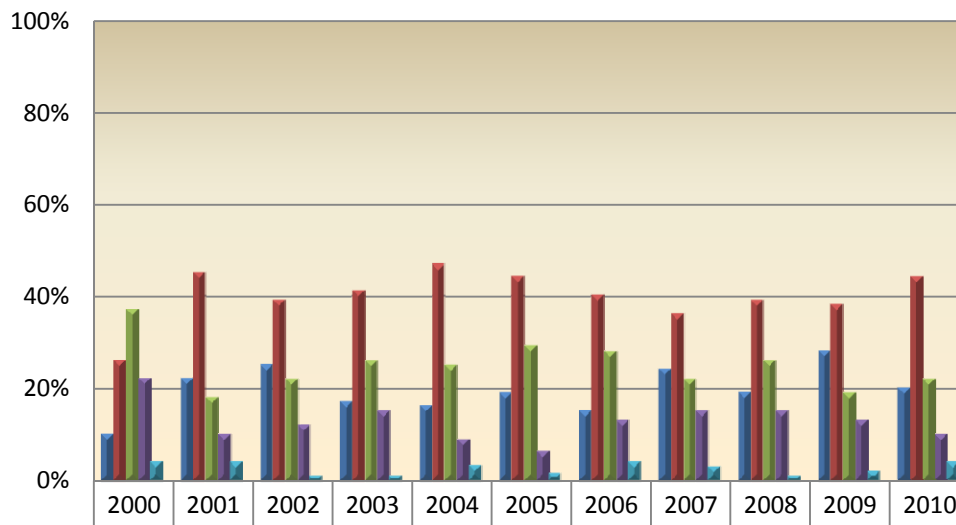
	2000	2001	2002	2003	2004	2005	2006	2007	2008	2009	2010
Excellent	18%	46%	59%	38%	35%	37%	44%	46%	38%	42%	50%
Good/Above Avg.	42%	44%	33%	51%	54%	52%	45%	43%	52%	41%	37%
Fair/Average	30%	4%	6%	6%	7%	8%	8%	8%	8%	14%	9%
Poor/Below Avg	2%	1%	0%	2%	1%	2%	2%	1%	2%	2%	4%
No Response/No Opinion/NA	8%	5%	2%	3%	3%	2%	0%	1%	0%	2%	1%

### Associated Students of Western Nevada (Student Government)



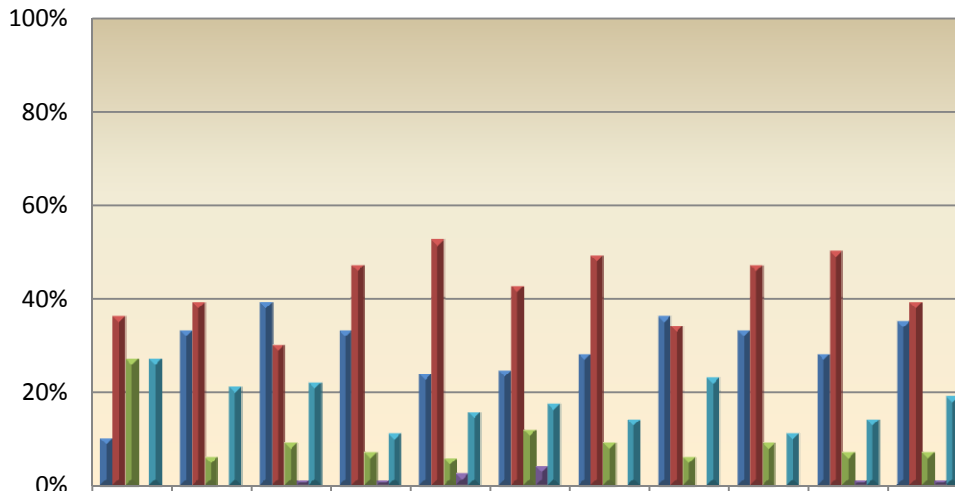
Excellent	0%	0%	0%	6%	3%	8%	11%	8%	7%	5%	10%
Good	0%	0%	0%	17%	22%	21%	30%	16%	21%	15%	27%
Fair	0%	0%	0%	11%	16%	13%	12%	6%	13%	14%	10%
Poor	0%	0%	0%	4%	4%	4%	0%	2%	3%	5%	3%
No Response/No Opinion/NA	0%	0%	0%	63%	54%	54%	47%	67%	56%	60%	50%

### Bookstore Services



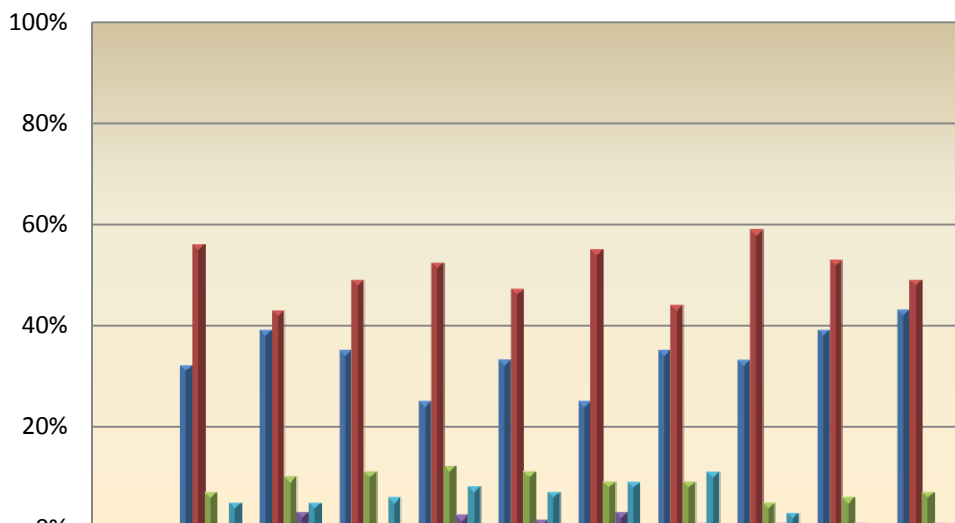
Excellent	10%	22%	25%	17%	16%	19%	15%	24%	19%	28%	20%
Good/Above Avg.	26%	45%	39%	41%	47%	44%	40%	36%	39%	38%	44%
Fair/Average	37%	18%	22%	26%	25%	29%	28%	22%	26%	19%	22%
Poor/Below Avg.	22%	10%	12%	15%	9%	6%	13%	15%	15%	13%	10%
No Response/No Opinion/NA	4%	4%	1%	1%	3%	2%	4%	3%	1%	2%	4%

### Business Office Services



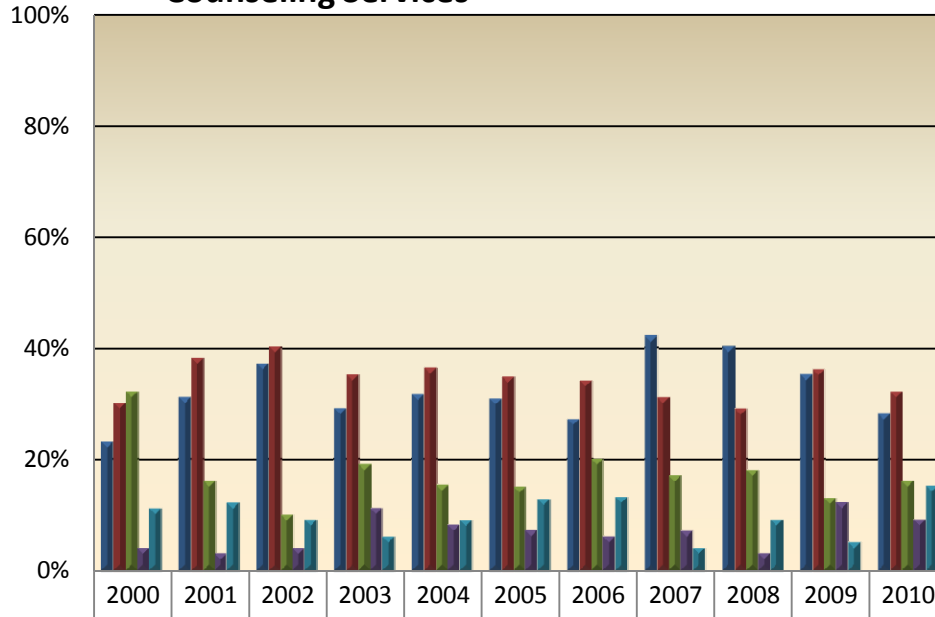
	2000	2001	2002	2003	2004	2005	2006	2007	2008	2009	2010
Excellent	10%	33%	39%	33%	24%	24%	28%	36%	33%	28%	35%
Good/Above Avg.	36%	39%	30%	47%	52%	43%	49%	34%	47%	50%	39%
Fair/Average	27%	6%	9%	7%	6%	12%	9%	6%	9%	7%	7%
Poor/Below Avg	0%	0%	1%	1%	2%	4%	0%	0%	0%	1%	1%
No Response/No Opinion/NA	27%	21%	22%	11%	16%	17%	14%	23%	11%	14%	19%

### Condition & Maintenance of College Grounds



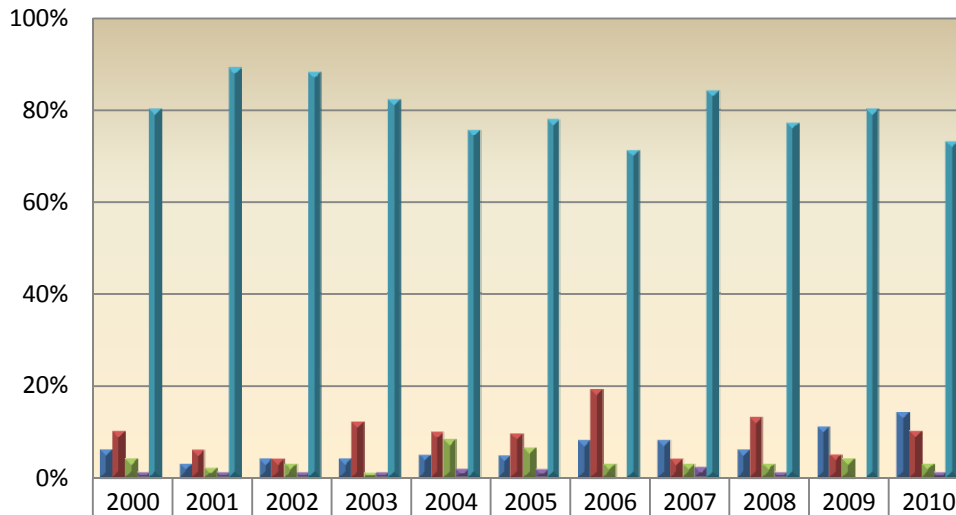
	2000	2001	2002	2003	2004	2005	2006	2007	2008	2009	2010
Excellent	0%	32%	39%	35%	25%	33%	25%	35%	33%	39%	43%
Good	0%	56%	43%	49%	52%	47%	55%	44%	59%	53%	49%
Fair	0%	7%	10%	11%	12%	11%	9%	9%	5%	6%	7%
Poor	0%	0%	3%	0%	2%	2%	3%	1%	1%	1%	1%
No Response/No Opinion/NA	0%	5%	5%	6%	8%	7%	9%	11%	3%	1%	1%

### Counseling Services



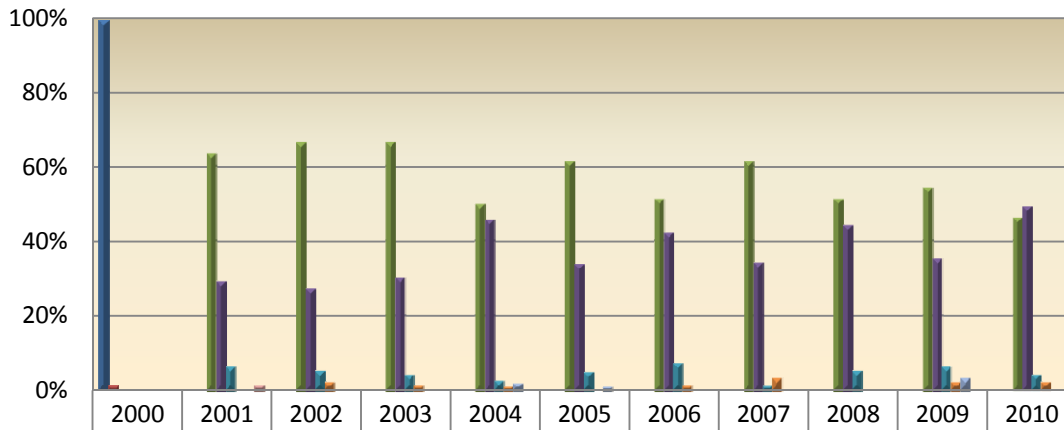
	2000	2001	2002	2003	2004	2005	2006	2007	2008	2009	2010
Excellent	23%	31%	37%	29%	31%	31%	27%	42%	40%	35%	28%
Good/Above Avg.	30%	38%	40%	35%	36%	35%	34%	31%	29%	36%	32%
Fair/Average	32%	16%	10%	19%	15%	15%	20%	17%	18%	13%	16%
Poor/Below Avg	4%	3%	4%	11%	8%	7%	6%	7%	3%	12%	9%
No Response/No Opinion/NA	11%	12%	9%	6%	9%	13%	13%	4%	9%	5%	15%

### Disabilities Services -- Disabled Student Services



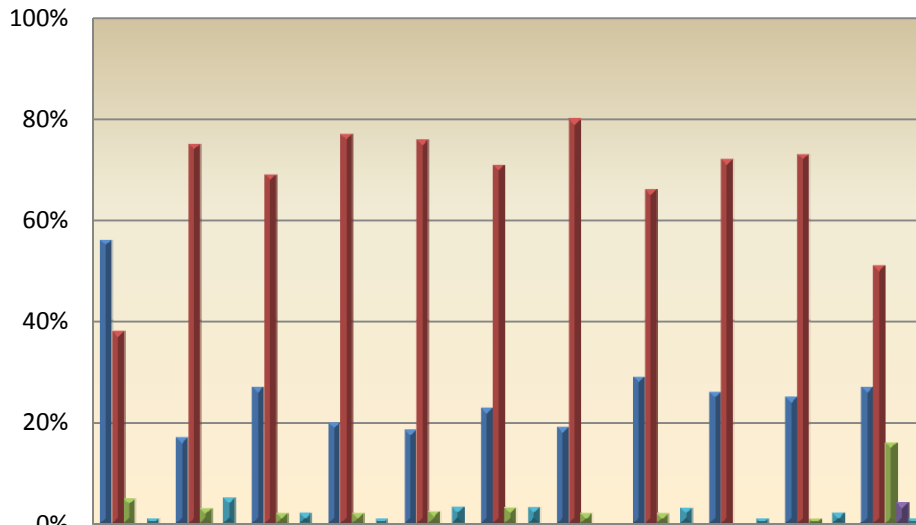
	2000	2001	2002	2003	2004	2005	2006	2007	2008	2009	2010
Excellent	6%	3%	4%	4%	5%	5%	8%	8%	6%	11%	14%
Good/Above Avg.	10%	6%	4%	12%	10%	10%	19%	4%	13%	5%	10%
Fair/Average	4%	2%	3%	1%	8%	6%	3%	3%	3%	4%	3%
Poor/Below Avg	1%	1%	1%	1%	2%	2%	0%	2%	1%	0%	1%
No Response/No Opinion/NA	80%	89%	88%	82%	75%	78%	71%	84%	77%	80%	73%

### Education Worth Expenditure of Money & Time



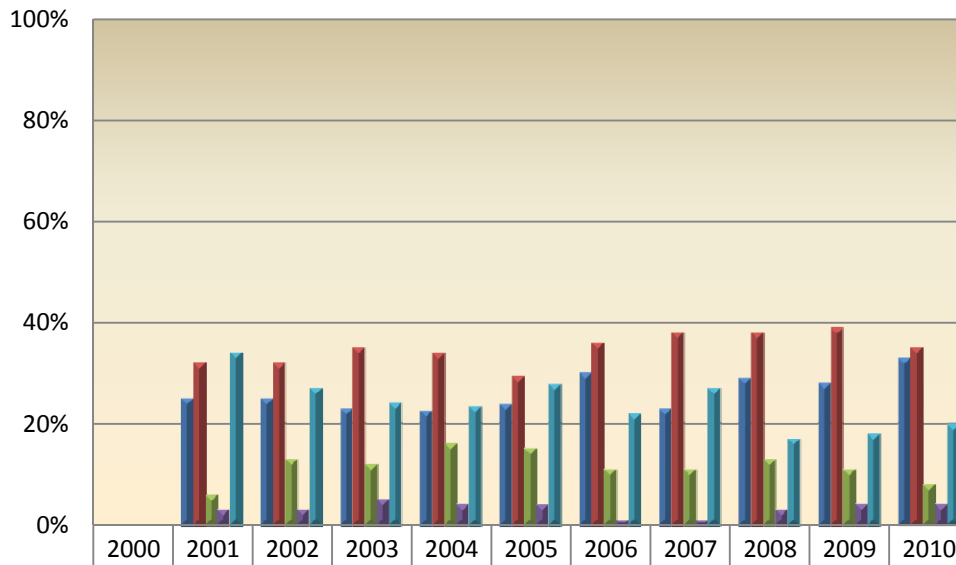
	2000	2001	2002	2003	2004	2005	2006	2007	2008	2009	2010
Yes	99%	0%	0%	0%	0%	0%	0%	0%	0%	0%	0%
No	1%	0%	0%	0%	0%	0%	0%	0%	0%	0%	0%
Strongly Agree	0%	63%	66%	66%	50%	61%	51%	61%	51%	54%	46%
Agree	0%	29%	27%	30%	46%	34%	42%	34%	44%	35%	49%
Neutral/Undecided	0%	6%	5%	4%	2%	5%	7%	1%	5%	6%	4%
Disagree	0%	0%	2%	1%	1%	0%	1%	3%	0%	2%	2%
Strongly Disagree	0%	0%	0%	0%	2%	1%	0%	0%	0%	3%	0%
Did Not Answer	0%	1%	0%	0%	0%	0%	0%	0%	0%	0%	0%

### Equipment in Good Condition & Up-to-Date



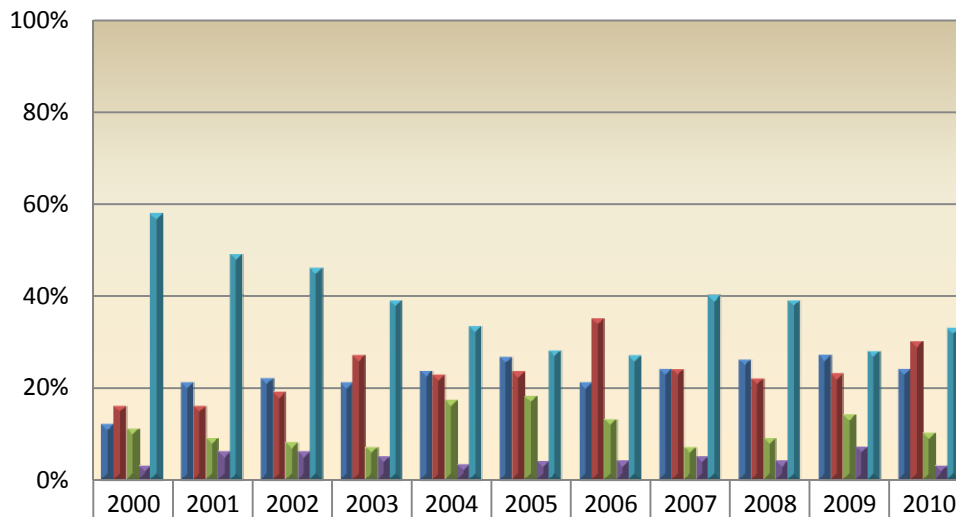
	2000	2001	2002	2003	2004	2005	2006	2007	2008	2009	2010
Always/Excellent/Above Average	56%	17%	27%	20%	19%	23%	19%	29%	26%	25%	27%
Usually/Average/Fair/Good	38%	75%	69%	77%	76%	71%	80%	66%	72%	73%	51%
Sometimes/Below Average/Poor	5%	3%	2%	2%	2%	3%	2%	2%	0%	1%	16%
Never	0%	0%	0%	0%	0%	0%	0%	0%	0%	0%	4%
Did Not Answer/No Opinion/NA	1%	5%	2%	1%	3%	3%	0%	3%	1%	2%	1%

### Faculty Advising in Department



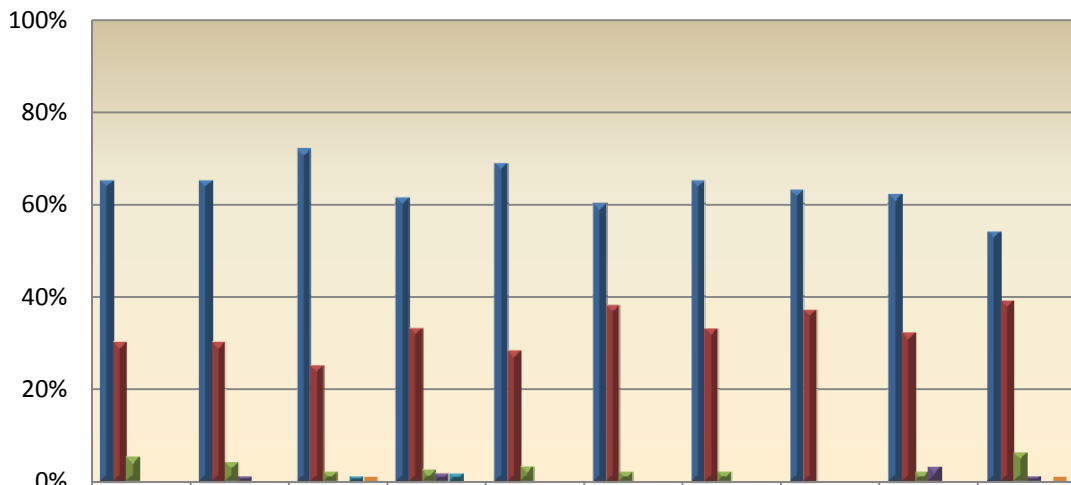
Excellent	0%	25%	25%	23%	23%	24%	30%	23%	29%	28%	33%
Good	0%	32%	32%	35%	34%	29%	36%	38%	38%	39%	35%
Fair	0%	6%	13%	12%	16%	15%	11%	11%	13%	11%	8%
Poor	0%	3%	3%	5%	4%	4%	1%	1%	3%	4%	4%
No Response/No Opinion/NA	0%	34%	27%	24%	23%	28%	22%	27%	17%	18%	20%

### Financial Aid Services



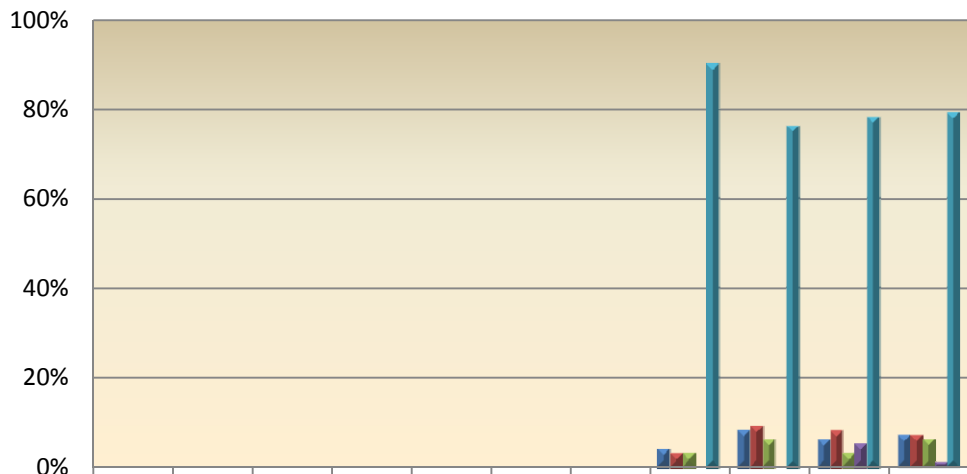
Excellent	12%	21%	22%	21%	24%	27%	21%	24%	26%	27%	24%
Good/Above Average	16%	16%	19%	27%	23%	23%	35%	24%	22%	23%	30%
Fair/Average	11%	9%	8%	7%	17%	18%	13%	7%	9%	14%	10%
Poor/Below Avg	3%	6%	6%	5%	3%	4%	4%	5%	4%	7%	3%
No Response/No Opinion/NA	58%	49%	46%	39%	33%	28%	27%	40%	39%	28%	33%

### Recommend WNC to Others



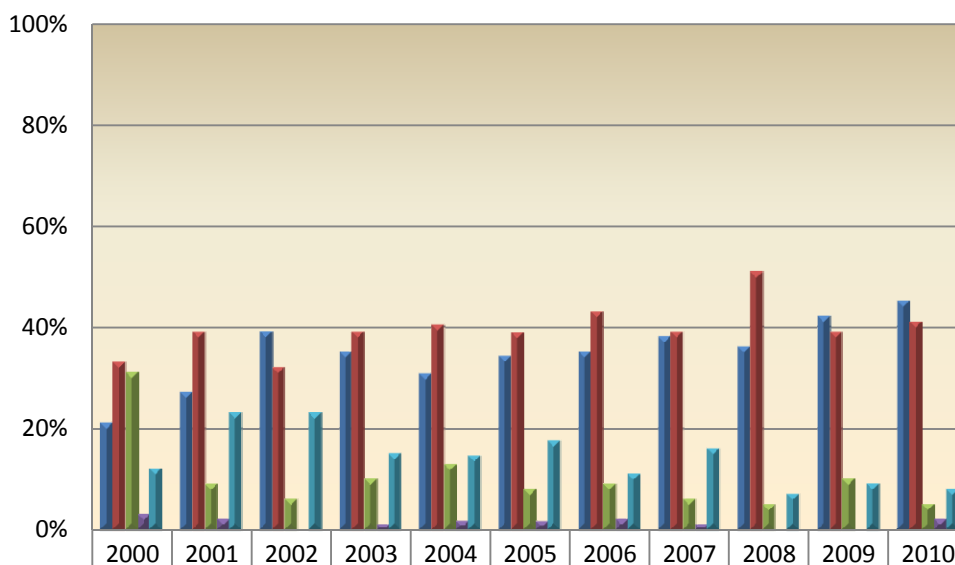
	2001	2002	2003	2004	2005	2006	2007	2008	2009	2010
Strongly Agree	65%	65%	72%	61%	69%	60%	65%	63%	62%	54%
Agree	30%	30%	25%	33%	28%	38%	33%	37%	32%	39%
Undecided/Neutral	5%	4%	2%	2%	3%	2%	2%	0%	2%	6%
Disagree	0%	1%	0%	2%	0%	0%	0%	0%	3%	1%
Strongly Disagree	0%	0%	1%	2%	0%	0%	0%	0%	0%	0%
Not Applicable	0%	0%	1%	0%	0%	0%	0%	0%	0%	1%

### Jive 'n Java Jr. (Fallon Campus)



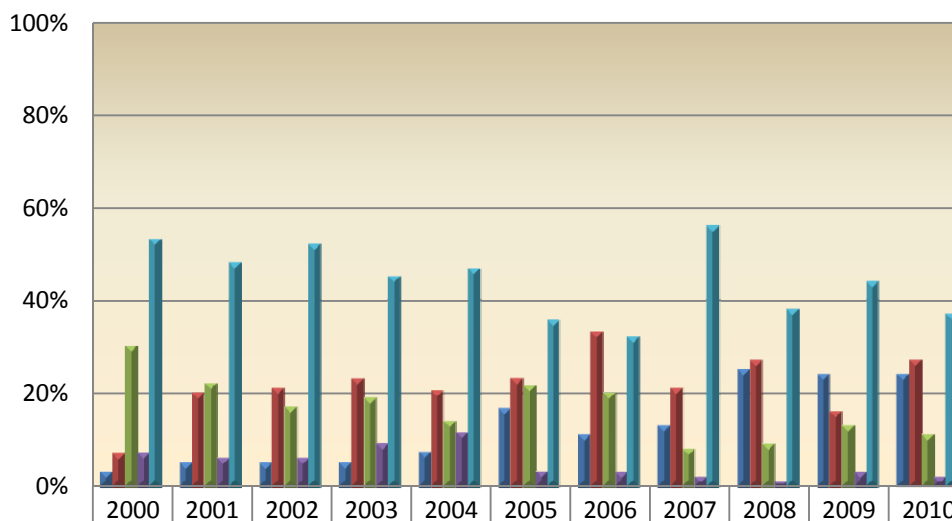
	2000	2001	2002	2003	2004	2005	2006	2007	2008	2009	2010
Excellent	0%	0%	0%	0%	0%	0%	0%	4%	8%	6%	7%
Good/Above Avg	0%	0%	0%	0%	0%	0%	0%	3%	9%	8%	7%
Fair/Average	0%	0%	0%	0%	0%	0%	0%	3%	6%	3%	6%
Poor/Below Avg	0%	0%	0%	0%	0%	0%	0%	0%	0%	5%	1%
No Response/No Opinion/NA	0%	0%	0%	0%	0%	0%	0%	90%	76%	78%	79%

### Library Services



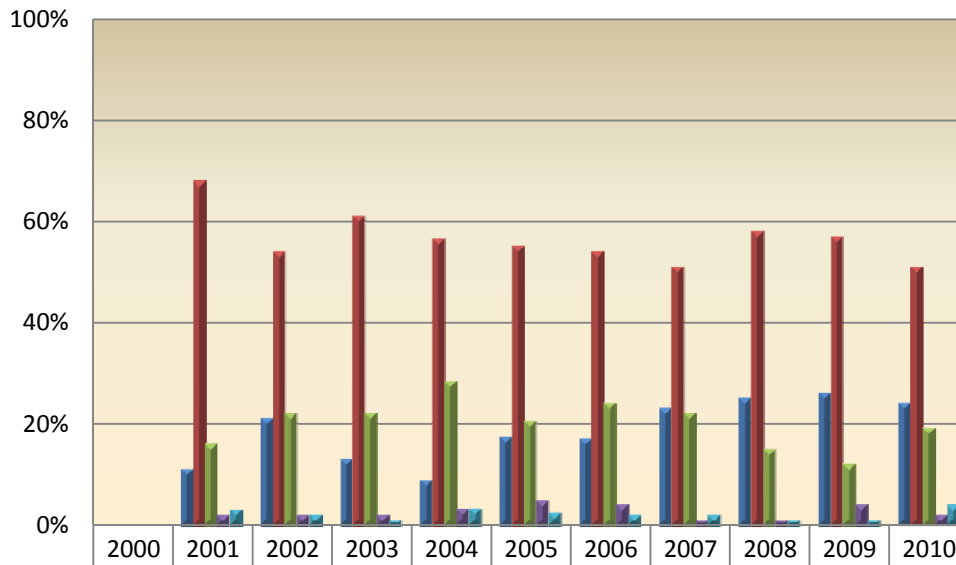
	2000	2001	2002	2003	2004	2005	2006	2007	2008	2009	2010
Excellent	21%	27%	39%	35%	31%	34%	35%	38%	36%	42%	45%
Good/Above Avg	33%	39%	32%	39%	40%	39%	43%	39%	51%	39%	41%
Fair/Avg	31%	9%	6%	10%	13%	8%	9%	6%	5%	10%	5%
Poor/Below Avg	3%	2%	0%	1%	2%	2%	2%	1%	0%	0%	2%
No Response/No Opinion/NA	12%	23%	23%	15%	15%	17%	11%	16%	7%	9%	8%

### Lifted @ the Sedway Café (Carson Campus)



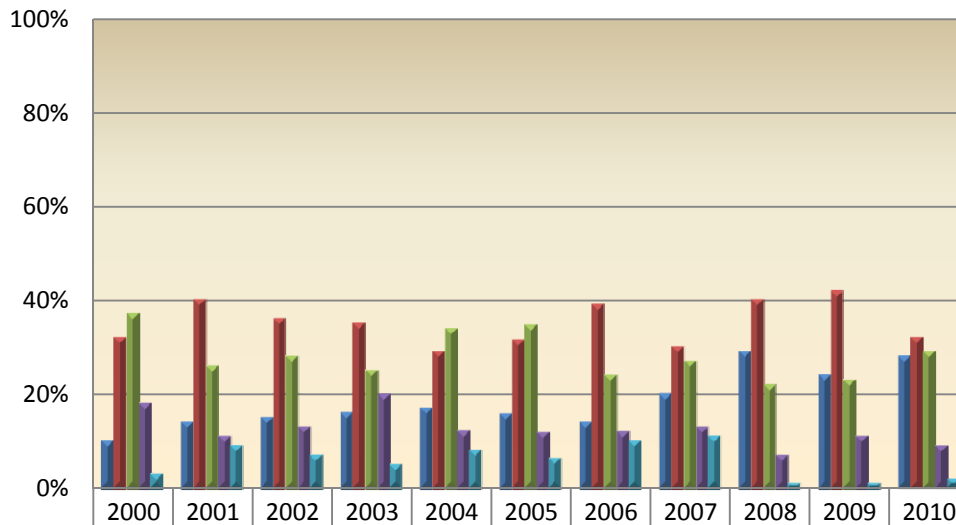
	2000	2001	2002	2003	2004	2005	2006	2007	2008	2009	2010
Excellent	3%	5%	5%	5%	7%	17%	11%	13%	25%	24%	24%
Good/Above Avg	7%	20%	21%	23%	20%	23%	33%	21%	27%	16%	27%
Fair/Average	30%	22%	17%	19%	14%	21%	20%	8%	9%	13%	11%
Poor/Below Avg	7%	6%	6%	9%	11%	3%	3%	2%	1%	3%	2%
No Response/No Opinion/NA	53%	48%	52%	45%	47%	36%	32%	56%	38%	44%	37%

### Overall Classroom Conditions



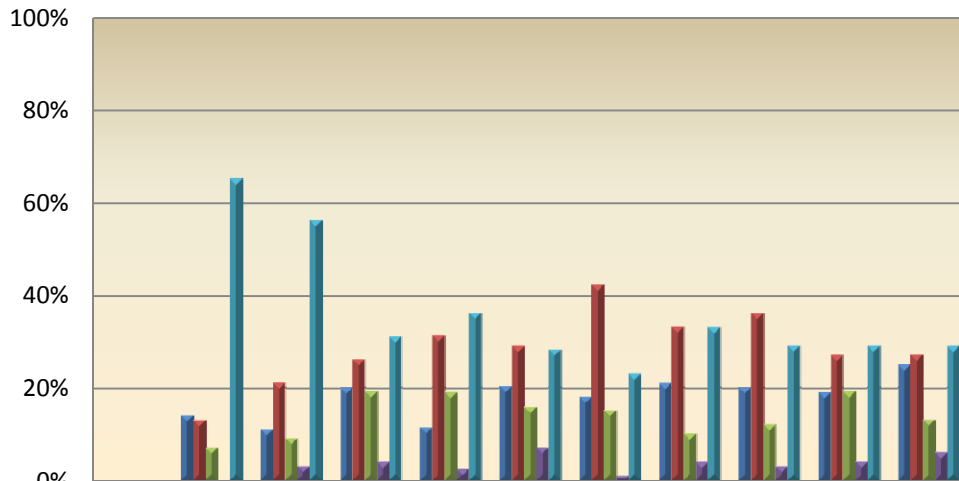
	2000	2001	2002	2003	2004	2005	2006	2007	2008	2009	2010
Excellent	0%	11%	21%	13%	9%	17%	17%	23%	25%	26%	24%
Good	0%	68%	54%	61%	56%	55%	54%	51%	58%	57%	51%
Fair	0%	16%	22%	22%	28%	20%	24%	22%	15%	12%	19%
Poor	0%	2%	2%	2%	3%	5%	4%	1%	1%	4%	2%
No Response/No Opinion/NA	0%	3%	2%	1%	3%	2%	2%	2%	1%	1%	4%

### Parking



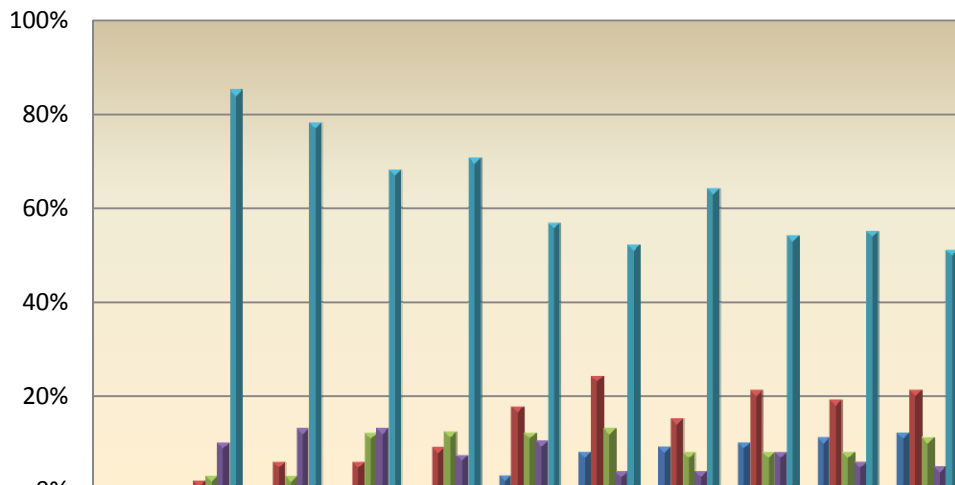
	2000	2001	2002	2003	2004	2005	2006	2007	2008	2009	2010
Excellent	10%	14%	15%	16%	17%	16%	14%	20%	29%	24%	28%
Good/Above Avg.	32%	40%	36%	35%	29%	32%	39%	30%	40%	42%	32%
Fair/Average	37%	26%	28%	25%	34%	35%	24%	27%	22%	23%	29%
Poor/Below Avg	18%	11%	13%	20%	12%	12%	12%	13%	7%	11%	9%
No Response/No Opinion/NA	3%	9%	7%	5%	8%	6%	10%	11%	1%	1%	2%

### Recognition / Promotion of Cultural Diversity



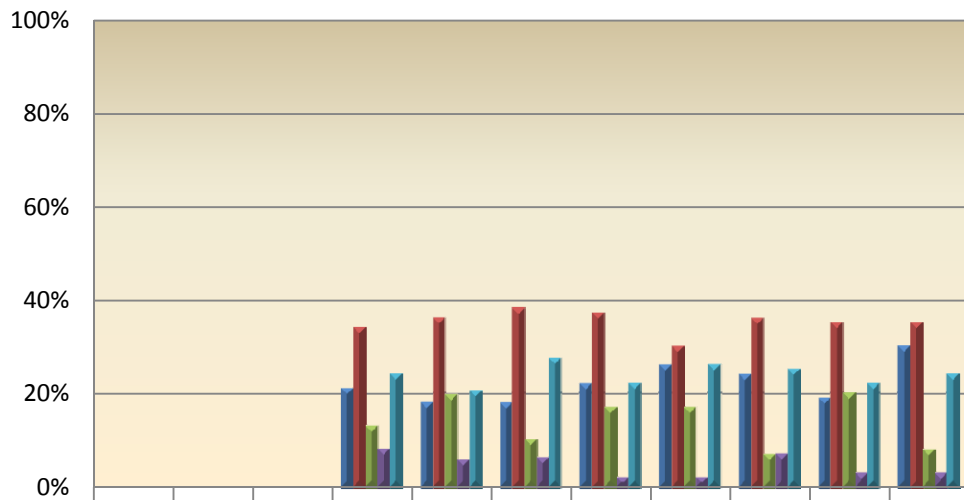
	2000	2001	2002	2003	2004	2005	2006	2007	2008	2009	2010
Excellent	0%	14%	11%	20%	11%	20%	18%	21%	20%	19%	25%
Good	0%	13%	21%	26%	31%	29%	42%	33%	36%	27%	27%
Fair	0%	7%	9%	19%	19%	16%	15%	10%	12%	19%	13%
Poor	0%	0%	3%	4%	2%	7%	1%	4%	3%	4%	6%
No Response/No Opinion/NA	0%	65%	56%	31%	36%	28%	23%	33%	29%	29%	29%

### Recreational Facilities



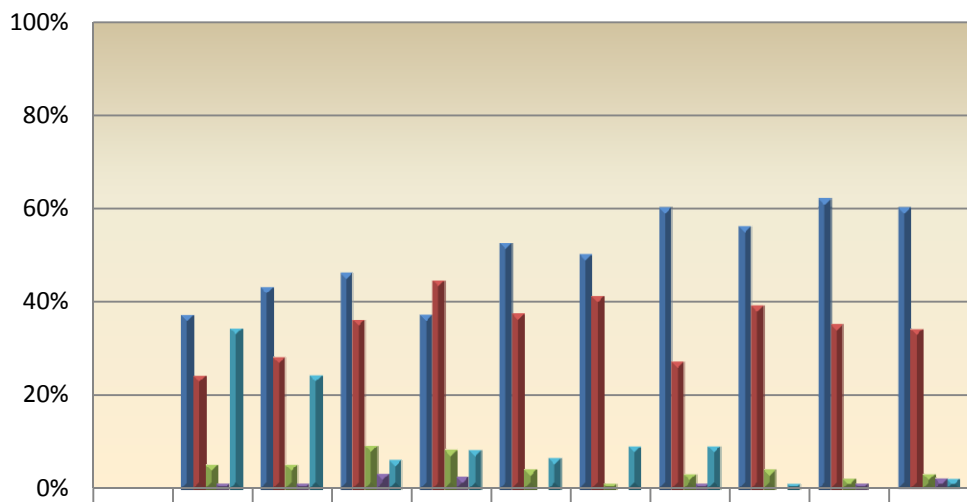
	2000	2001	2002	2003	2004	2005	2006	2007	2008	2009	2010
Excellent	0%	0%	1%	0%	1%	3%	8%	9%	10%	11%	12%
Good	0%	2%	6%	6%	9%	18%	24%	15%	21%	19%	21%
Fair	0%	3%	3%	12%	12%	12%	13%	8%	8%	8%	11%
Poor	0%	10%	13%	13%	7%	10%	4%	4%	8%	6%	5%
No Response/No Opinion/NA	0%	85%	78%	68%	70%	57%	52%	64%	54%	55%	51%

### Student Academic Recognition



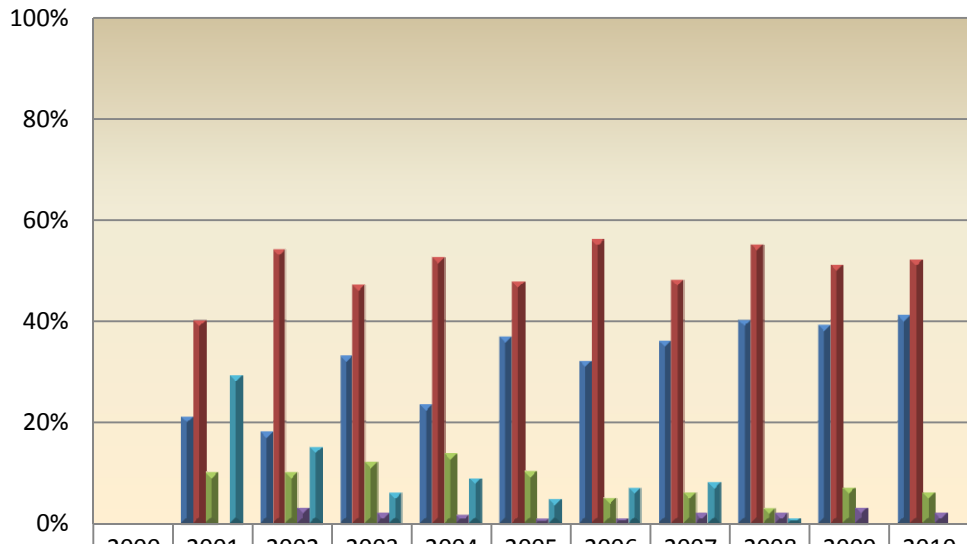
	2000	2001	2002	2003	2004	2005	2006	2007	2008	2009	2010
Excellent	0%	0%	0%	21%	18%	18%	22%	26%	24%	19%	30%
Good	0%	0%	0%	34%	36%	38%	37%	30%	36%	35%	35%
Fair	0%	0%	0%	13%	20%	10%	17%	17%	7%	20%	8%
Poor	0%	0%	0%	8%	6%	6%	2%	2%	7%	3%	3%
No Response/No Opinion/NA	0%	0%	0%	24%	20%	27%	22%	26%	25%	22%	24%

### Web Registration



	2000	2001	2002	2003	2004	2005	2006	2007	2008	2009	2010
Excellent	0%	37%	43%	46%	37%	52%	50%	60%	56%	62%	60%
Good	0%	24%	28%	36%	44%	37%	41%	27%	39%	35%	34%
Fair	0%	5%	5%	9%	8%	4%	1%	3%	4%	2%	3%
Poor	0%	1%	1%	3%	2%	0%	0%	1%	0%	1%	2%
No Response/No Opinion/NA	0%	34%	24%	6%	8%	6%	9%	9%	1%	0%	2%

### WNC Web Site



	2000	2001	2002	2003	2004	2005	2006	2007	2008	2009	2010
Excellent	0%	21%	18%	33%	23%	37%	32%	36%	40%	39%	41%
Good	0%	40%	54%	47%	52%	48%	56%	48%	55%	51%	52%
Fair	0%	10%	10%	12%	14%	10%	5%	6%	3%	7%	6%
Poor	0%	0%	3%	2%	2%	1%	1%	2%	2%	3%	2%
No Response/No Opinion/NA	0%	29%	15%	6%	9%	5%	7%	8%	1%	0%	0%