



CAMPUS STATISTICS

A Longitudinal View of Selected Measures

**Fall Terms
1995-2005**

**Western Nevada Community College
Office of Institutional Research**

Table of Contents

STUDENT ACCESS.....	3
1.1 HEADCOUNT AND FTE BY CAMPUS	3
1.2 HEADCOUNT ENROLLMENT BY CAMPUS BY CREDIT STATUS.....	4
1.3 HEADCOUNT ENROLLMENT BY CAMPUS BY GENDER AND ETHNICITY	5
1.4 HEADCOUNT ENROLLMENT BY CAMPUS BY UNIT LOAD.....	8
1.5 HEADCOUNT ENROLLMENT BY CAMPUS BY AGE.....	10
1.6 HEADCOUNT ENROLLMENT BY CAMPUS BY DAY/EVENING STATUS.....	12
1.7 SUCCESSFUL COURSE COMPLETION RATE BY CAMPUS.....	14
1.8 RETENTION FALL TO FALL BY CAMPUS	15

Notes: Enrollment is calculated as of the fall census dates (October 15th).

Headcount is duplicated if a student attends more than one campus.

Carson, Douglas, and Fallon campuses are represented. Other teaching locations do not have sufficient numbers to generate reliable statistics.

Student Access

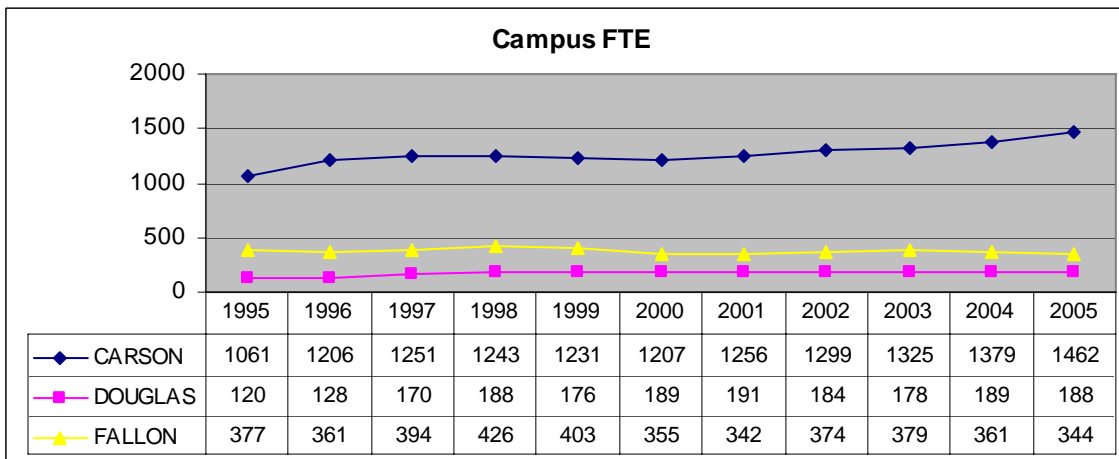
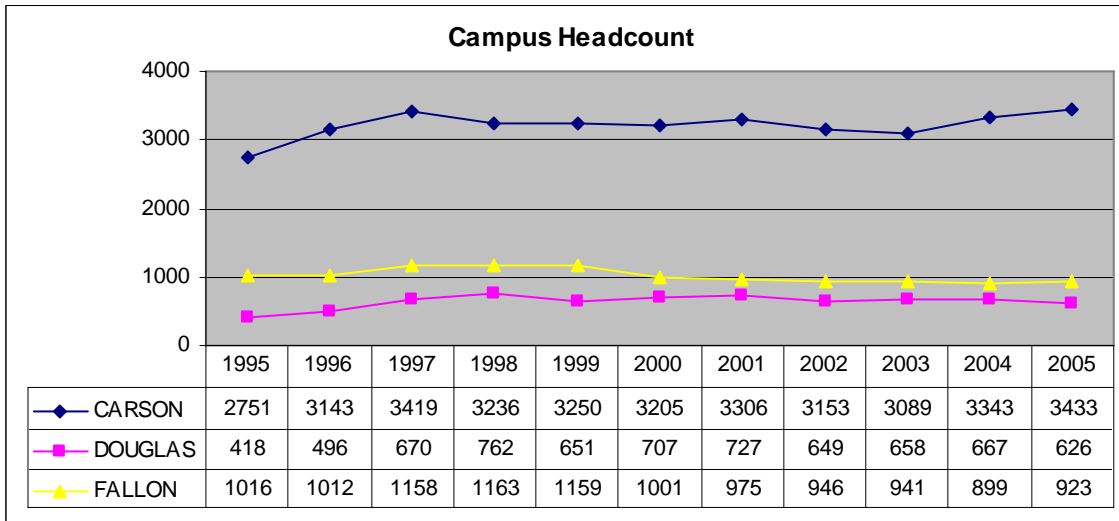
1.1 Headcount and FTE by Campus

Definition of Measure: This measure shows headcount enrollment and FTE enrollment of all students as of the fall census date. One FTE is equivalent to registration in 15 credit hours whether taken by one student or a combination of several students.

Uses of Measure: Headcount shows the count of students enrolled in at least one credit course. FTE is a measurement equal to one student enrolled full-time (15 credits).

Analysis: Over the 10 year period, the Carson campus headcount increased by 25% while FTE increased by 38%. The Douglas campus headcount increased by 50% while FTE increased by 57%. The Fallon campus headcount decreased by 10% while FTE decreased by 9%.

Source: Student Information System.



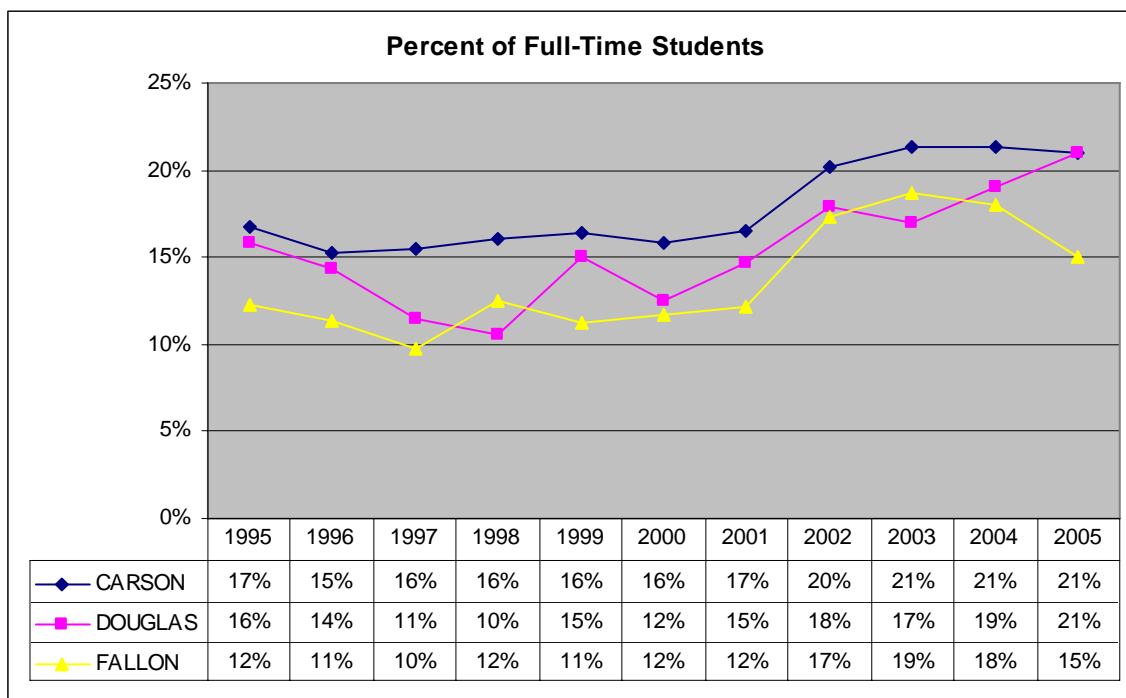
1.2 Headcount Enrollment by Campus by Credit Status

Definition of Measure: This measure shows the percentage of full-time headcount enrollment. A student carrying 12 or more credit units is defined as full-time.

Uses of Measure: This measure shows the level of participation for full-time load status.

Analysis: Overall, Carson, Douglas and Fallon have all seen an increase in the percentage of full-time students. The Carson percentage has increased by 4%, the Douglas percentage has increased by 5% and the Fallon percentage has increased by 3%.

Source: Student Information System.



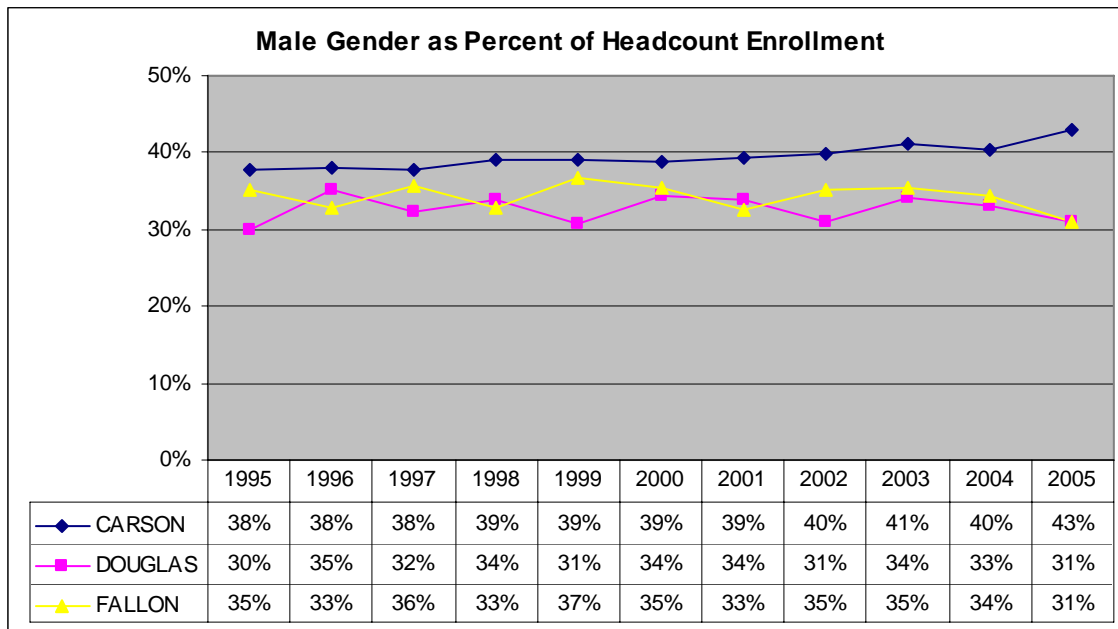
1.3 Headcount Enrollment by Campus by Gender and Ethnicity

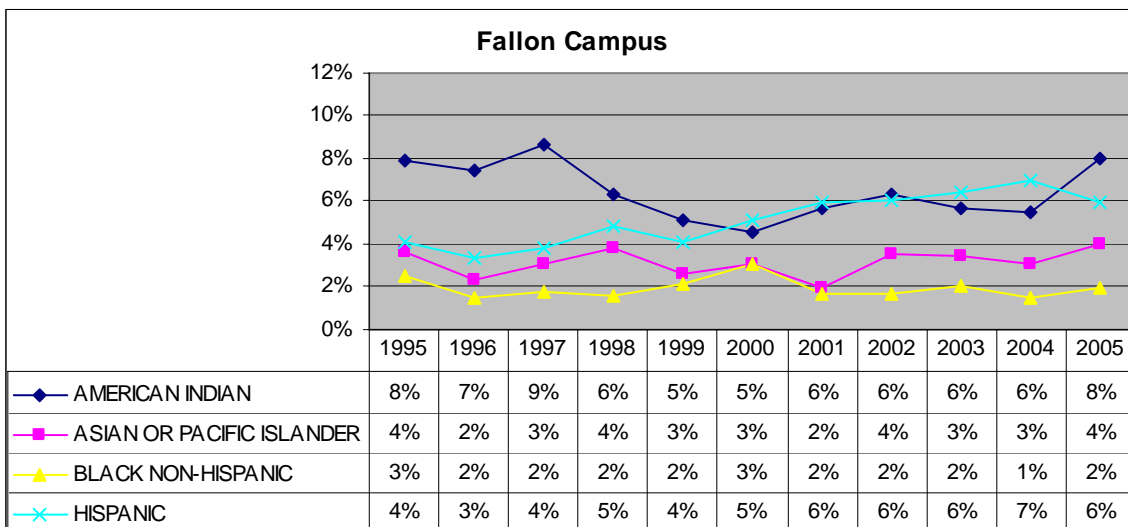
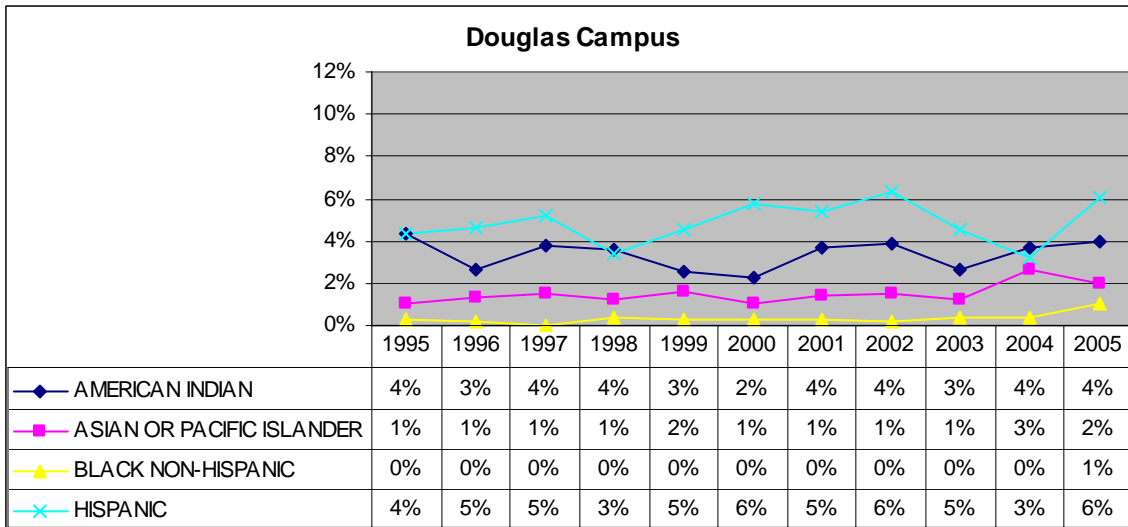
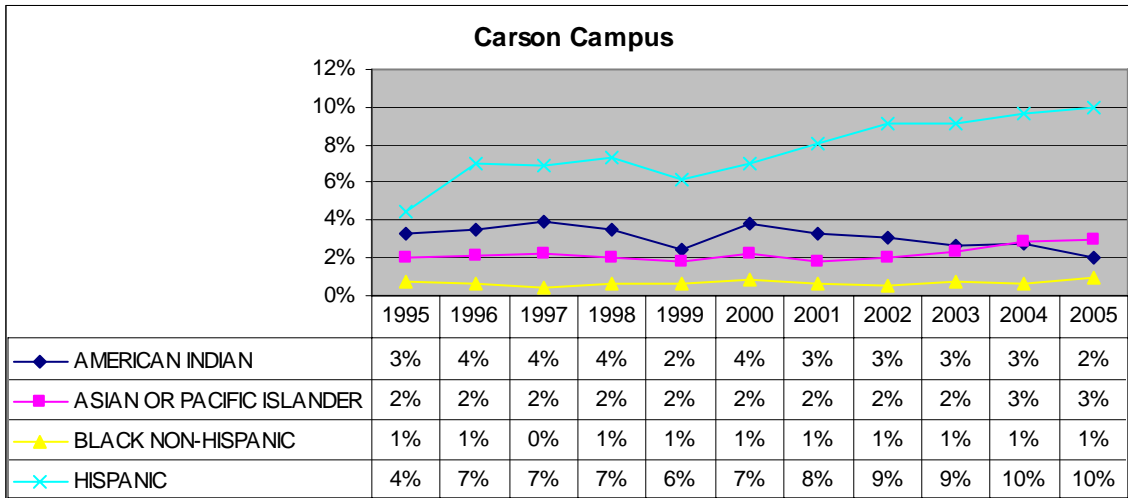
Definition of Measure: This measure shows headcount enrollment by gender/ethnicity. Percent does not include unknowns.

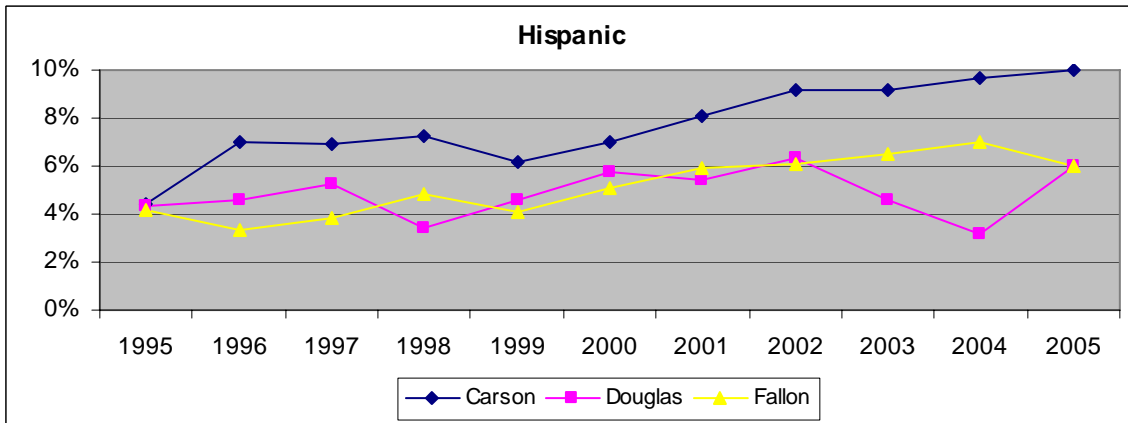
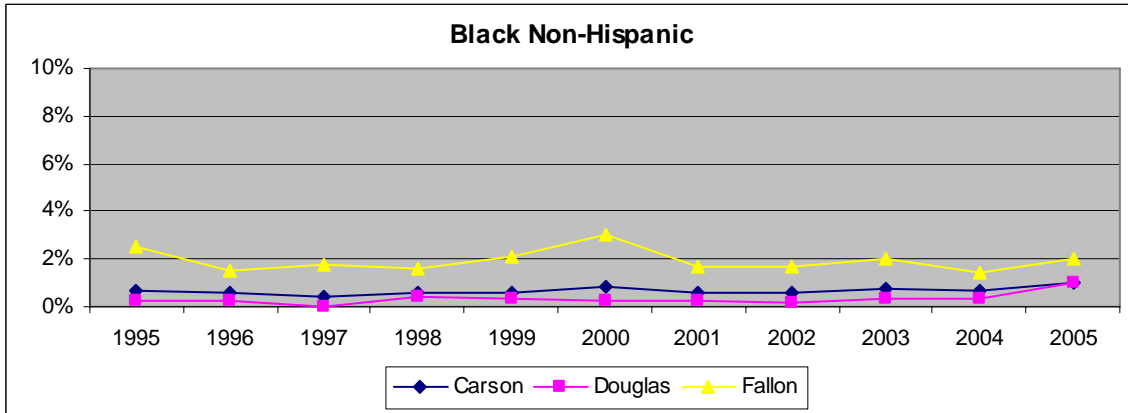
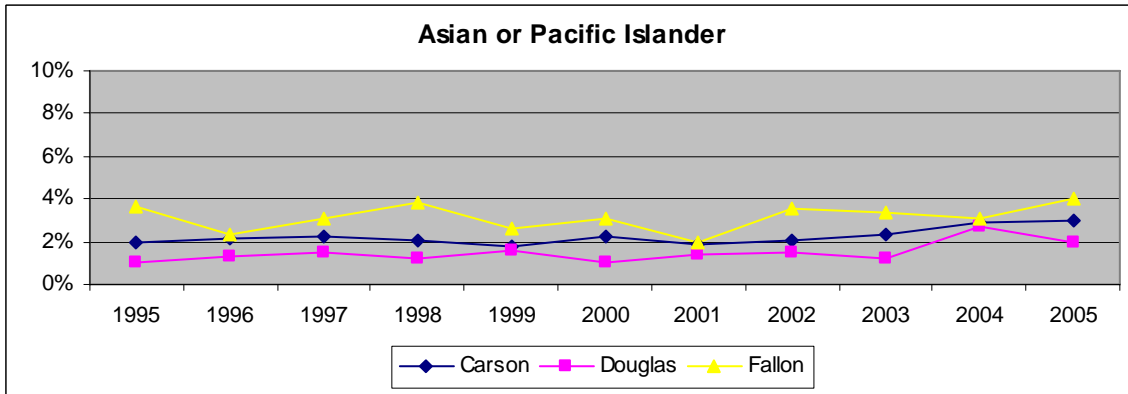
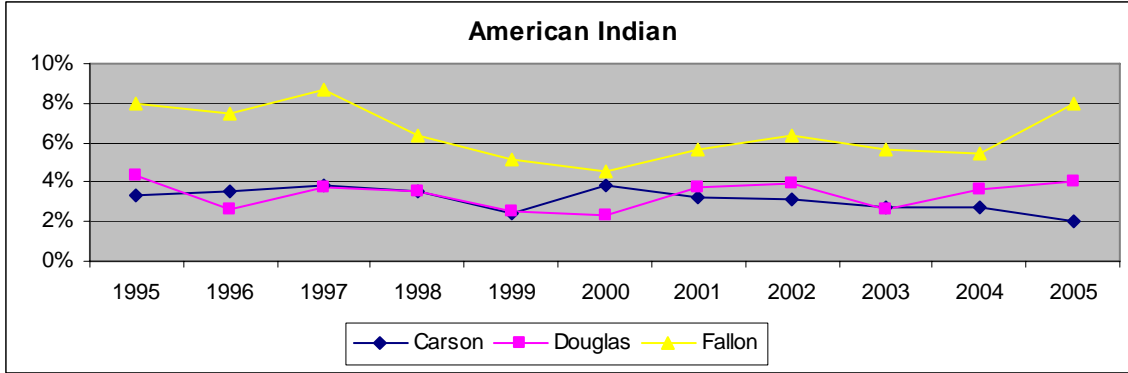
Uses of Measure: This measure shows the level of student participation by gender and ethnicity.

Analysis: The Fallon campus is the most diverse with a 20% minority population. The Carson campus has had a small but steady increase in the percentage of males. All campuses have had an increase in the percentage of Hispanic students.

Source: Student Information System.







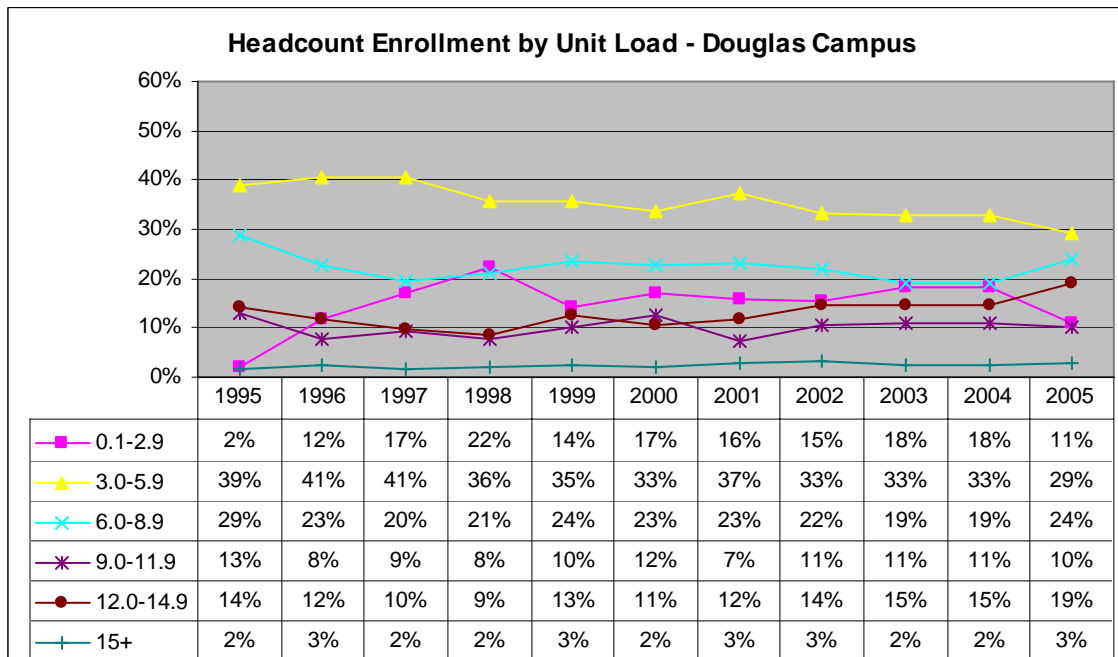
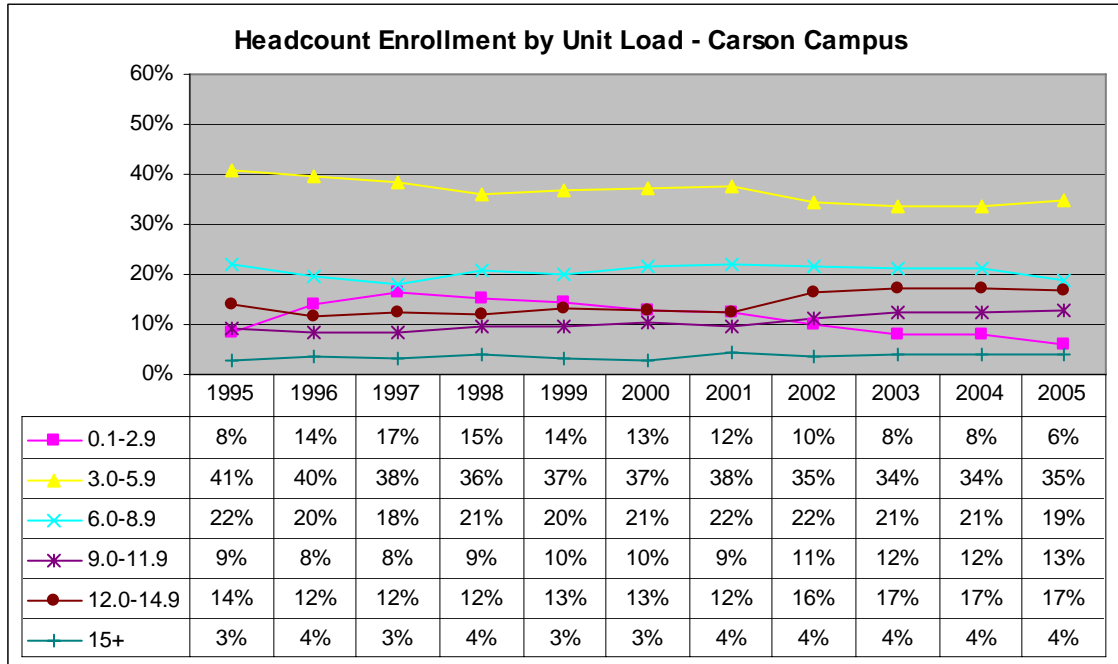
1.4 Headcount Enrollment by Campus by Unit Load

Definition of Measure: This measure shows the percentage of headcount enrollment by unit load carried.

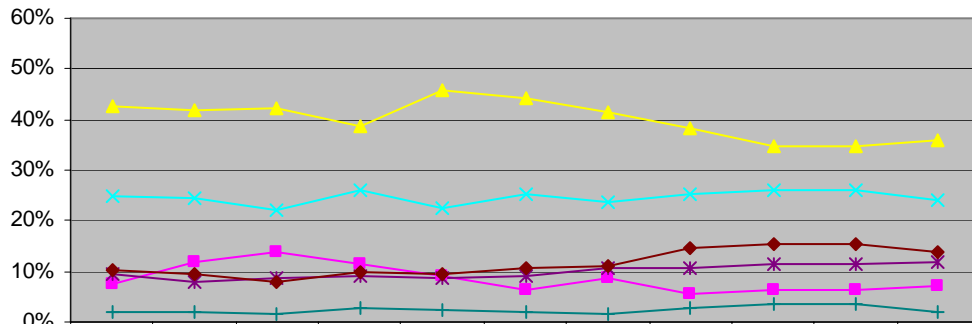
Uses of Measure: This measure shows the level of student participation by unit load.

Analysis: The percentage of students taking 9 or more credits has increased at all campuses.

Source: Student Information System.



Headcount Enrollment by Unit Load - Fallon Campus



	1995	1996	1997	1998	1999	2000	2001	2002	2003	2004	2005
0.1-2.9	8%	12%	14%	11%	9%	6%	9%	5%	6%	6%	7%
3.0-5.9	43%	42%	42%	39%	46%	44%	42%	38%	35%	35%	36%
6.0-8.9	25%	24%	22%	26%	23%	25%	24%	25%	26%	26%	24%
9.0-11.9	10%	8%	9%	9%	9%	9%	11%	10%	12%	12%	12%
12.0-14.9	10%	9%	8%	10%	10%	11%	11%	15%	15%	15%	14%
15+	2%	2%	2%	3%	2%	2%	1%	3%	3%	3%	2%

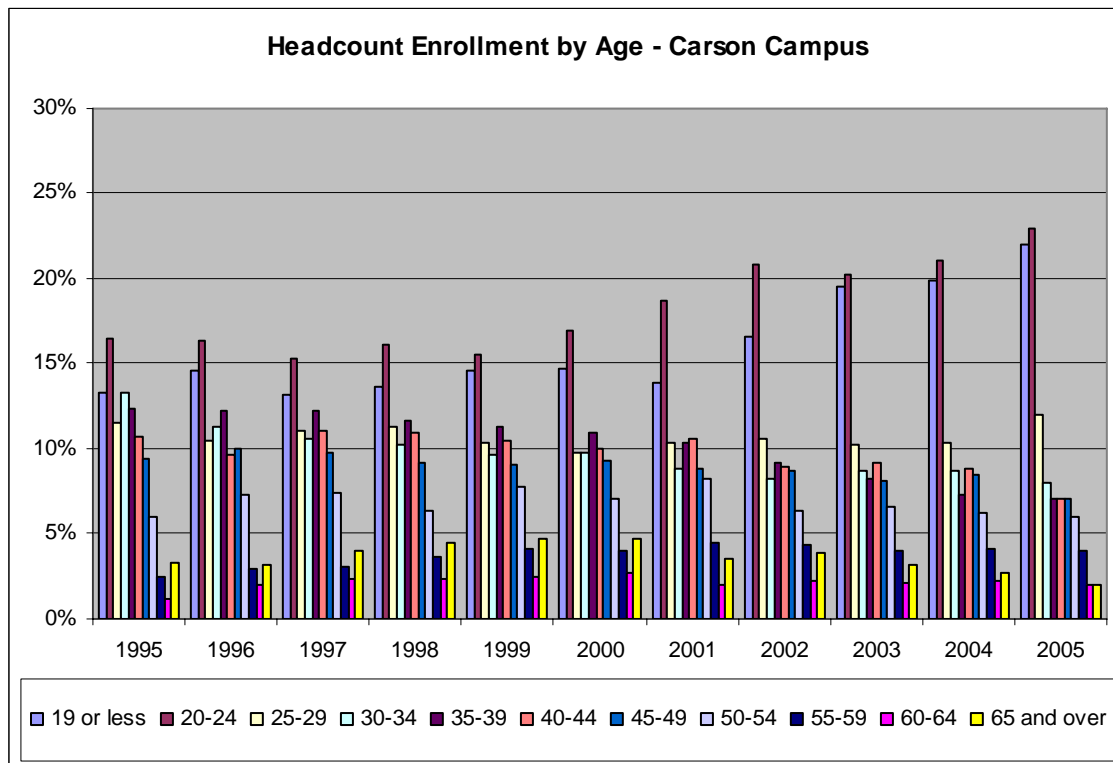
1.5 Headcount Enrollment by Campus by Age

Definition of Measure: This measure shows the percentage of headcount enrollment of all students by age categories. To be counted, a student was enrolled with at least .5 units on the fall census date. Nineteen and under includes co-enrolled high school students. Percent does not include unknowns.

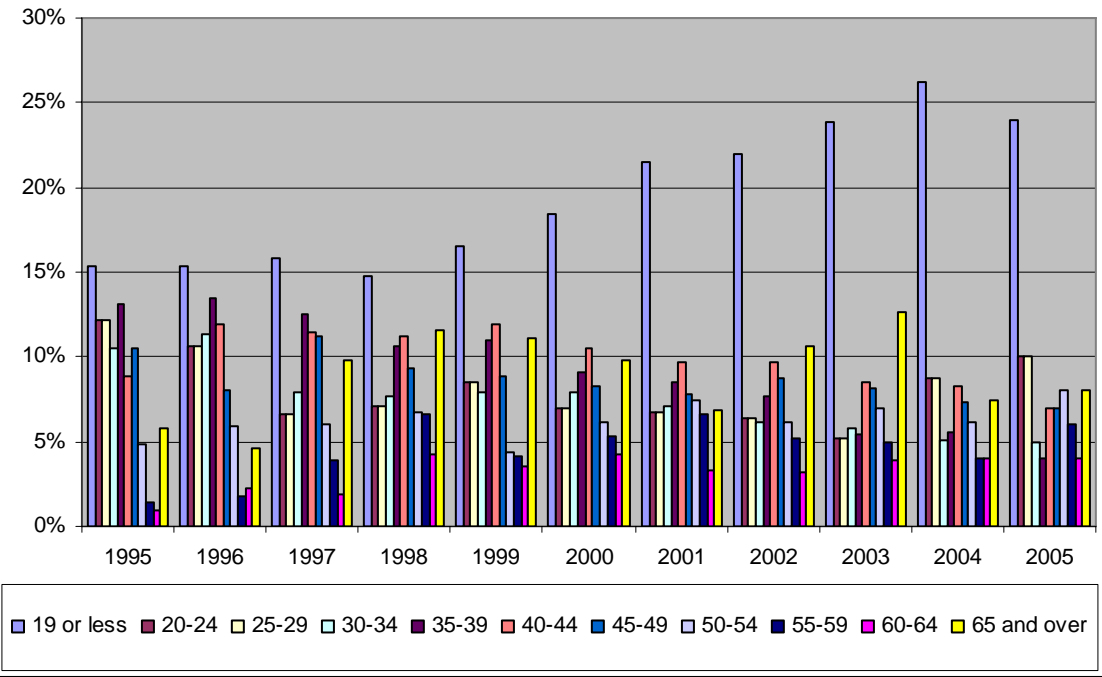
Uses of Measure: This measure shows the level of participation for different age categories.

Analysis: Overall, all campuses have seen an increase in the percentage of younger students: Carson has experienced a 16% increase in the percentage of students under 25; Douglas experienced an increase of 9% in the percentage of students 19 and under. Fallon experienced an increase of 4% in the percentage of students 19 and under.

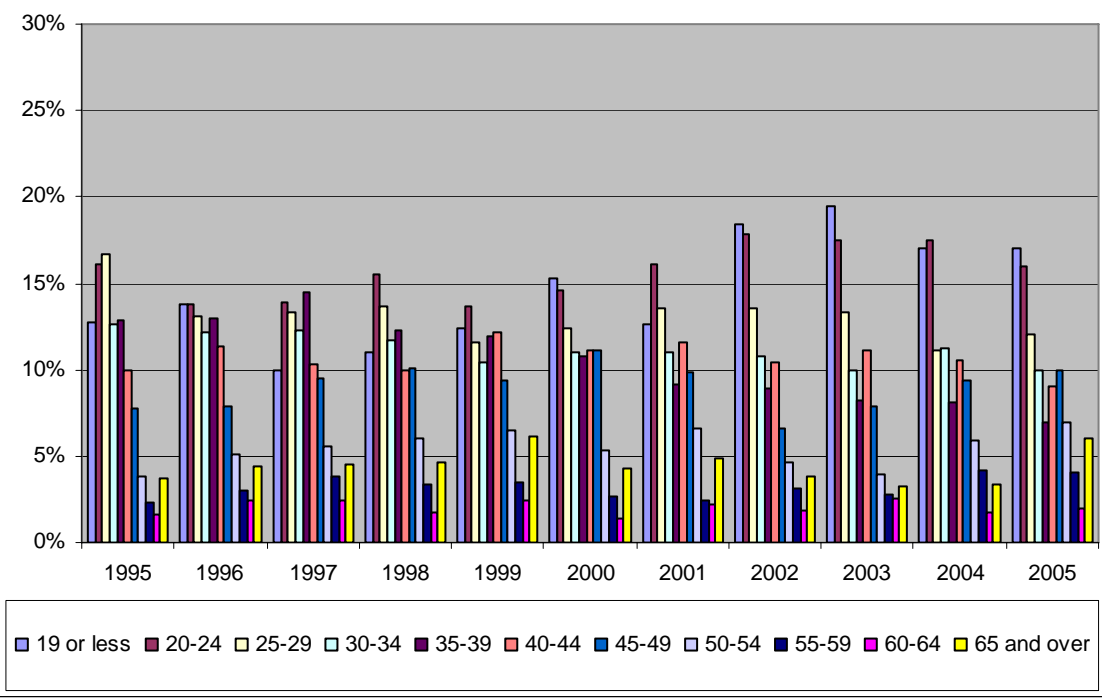
Source: Student Information System.



Headcount Enrollment by Age - Douglas Campus



Headcount Enrollment by Age - Fallon Campus



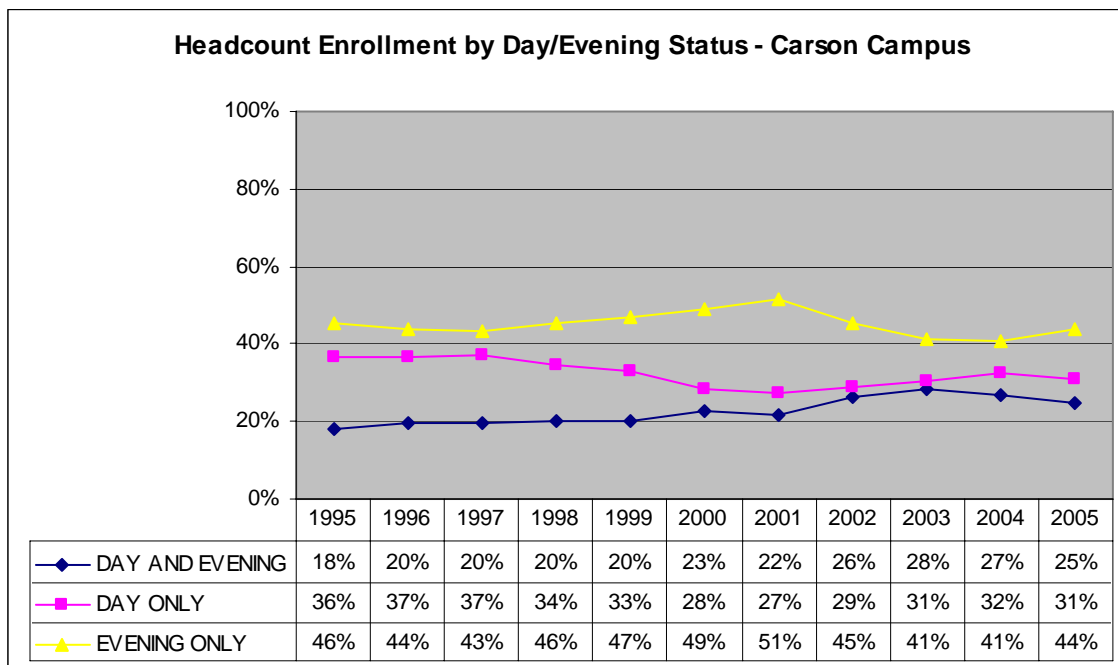
1.6 Headcount Enrollment by Campus by Day/Evening Status

Definition of Measure: Classes scheduled to begin after 4:30 p.m. are defined as evening classes.

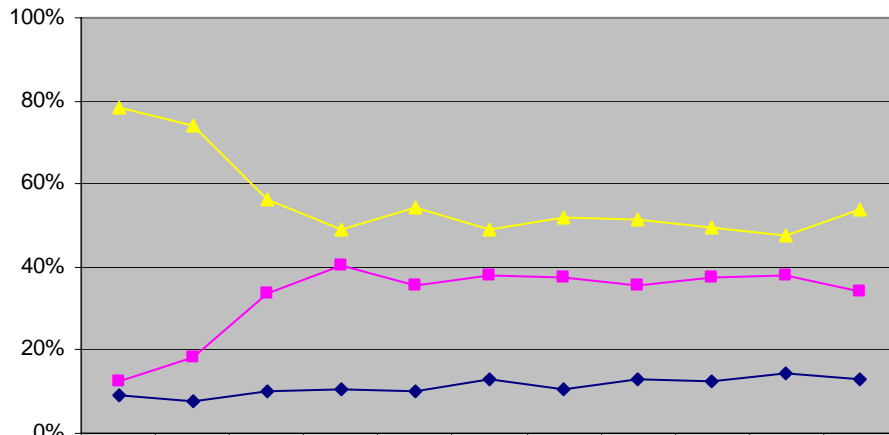
Uses of Measure: This measure shows the level of student participation by the time of day classes are attended. It also illustrates the institutional effort to offer instruction to nontraditional students during evening hours.

Analysis: The Carson and Douglas campuses have seen an increase in the percentage of students attending day and evening classes. Carson and Douglas have also seen a decrease in the percentage of students attending evening only. Carson experienced a decrease of 5% in the percentage of students attending day only. Douglas experienced a decrease in the percentage of students attending day only from last year but still has the highest percentage for students attending day only classes. Fallon percentages have remained stable.

Source: Student Information System.

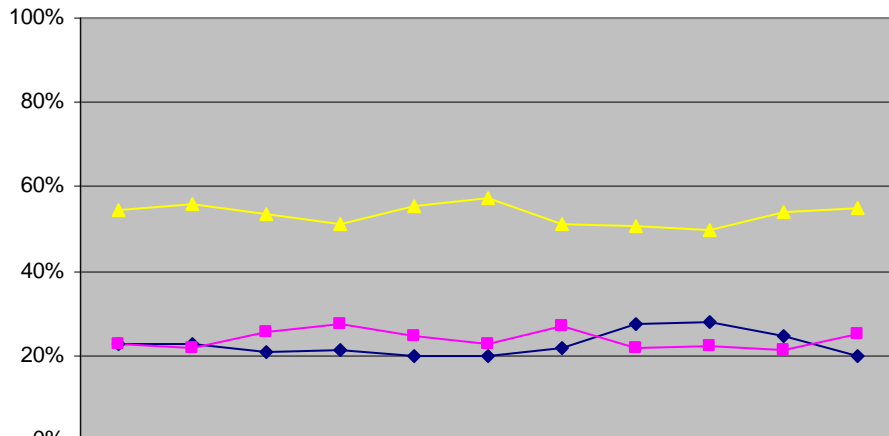


Headcount Enrollment by Day/Evening Status - Douglas Campus



	1995	1996	1997	1998	1999	2000	2001	2002	2003	2004	2005
◆ DAY AND EVENING	9%	7%	10%	11%	10%	13%	11%	13%	13%	15%	13%
■ DAY ONLY	12%	18%	34%	41%	35%	38%	37%	36%	38%	38%	34%
▲ EVENING ONLY	78%	74%	56%	49%	55%	49%	52%	52%	50%	48%	54%

Headcount Enrollment by Day/Evening Status - Fallon Campus



	1995	1996	1997	1998	1999	2000	2001	2002	2003	2004	2005
◆ DAY AND EVENING	23%	23%	21%	21%	20%	20%	22%	28%	28%	25%	20%
■ DAY ONLY	23%	22%	26%	28%	24%	23%	27%	22%	22%	21%	25%
▲ EVENING ONLY	54%	56%	54%	51%	56%	57%	51%	51%	50%	54%	55%

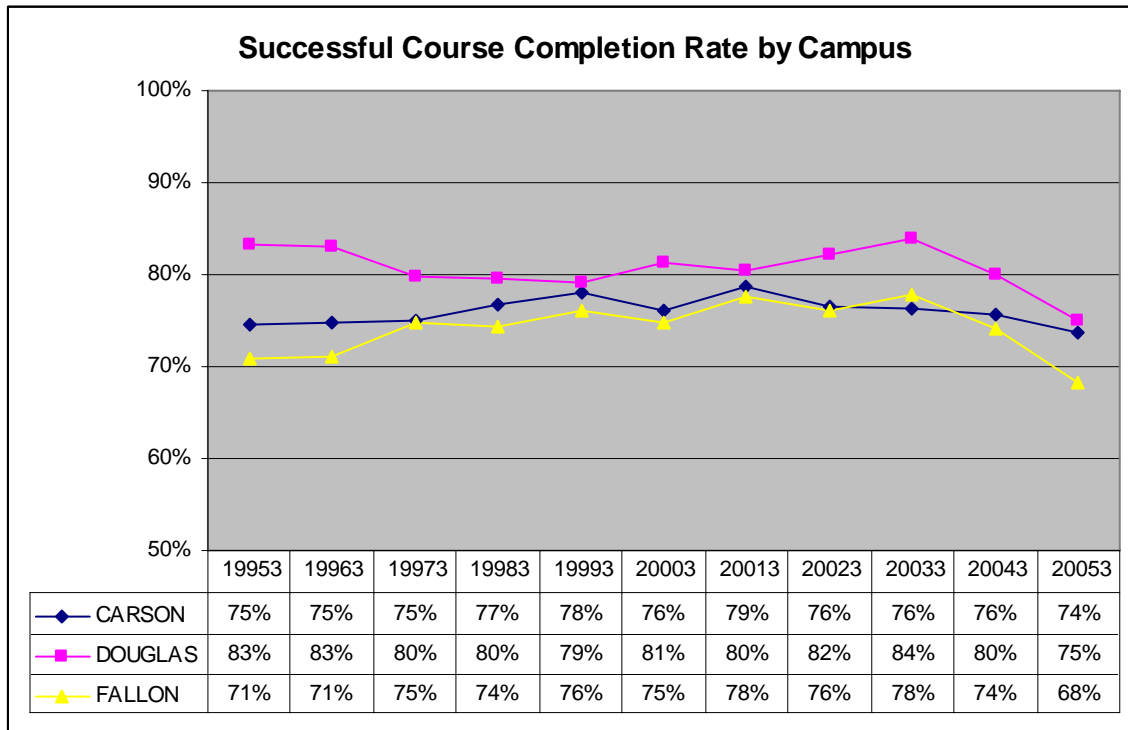
1.7 Successful Course Completion Rate by Campus

Definition of Measure: Successful course completion rate is the sum of course enrollments receiving a grade of A, B, C, or P divided by attempted course enrollment.

Uses of Measure: Successful course completion is an indicator of student academic performance.

Analysis: Over the ten year period, the rate for Douglas successful course completion has been consistently higher than the rate for Carson and Fallon.

Source: Student Information System.



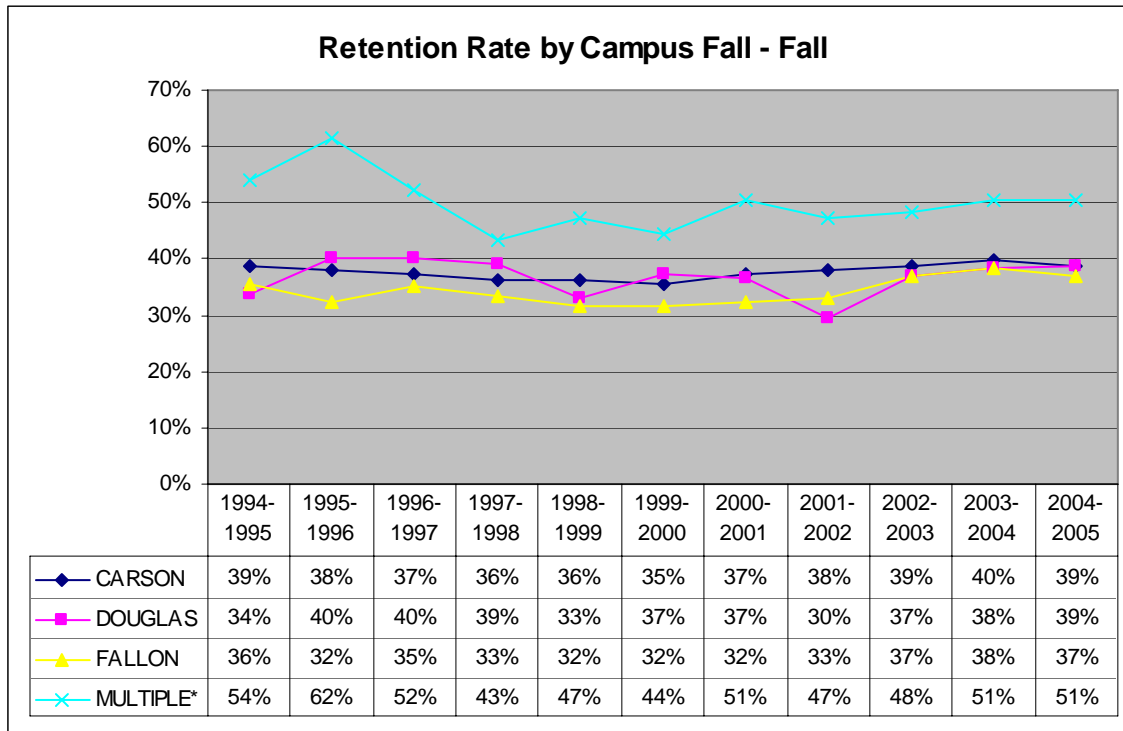
1.8 Retention Fall to Fall by Campus

Definition of Measure: Retention rate is calculated as the headcount enrollment of students who return for the second term, divided by the total headcount enrollment during the first term minus the number of graduates from the first term.

Uses of Measure: Retention rate is a measure of endurance by students in their continued pursuit of studies (from term to term) towards the completion of an educational goal or training objective.

Analysis: Students who attend classes on more than one campus have a higher retention rate than students who attend all classes on one campus.

Source: Student Information System.



* Students who attend courses on more than one campus.