



# iNtegrate2 WNC

In Good  
Company



“The configurations, pre-built integrations, consistent updates and business process framework have been transformative to our business.”



“At the highest level, Workday is going to be increasingly powerful for our organization because we’re able to make decisions faster with more complete information.”

J. David Armstrong,

SEPTEMBER 2016

## Rebecca Martinez on Workday



Rebecca Martinez supports WNC’s Business Office as an Accountant. This October marks three years of service to WNC.

Rebecca has been actively involved in the iNtegrate2 project as a subject matter expert (SME) for the areas of procurement, assets and all things accounting.

When asked about her thoughts upon hearing WNC was getting a new Financial and HR system, she didn’t hide her feelings.

“Awesome!” she shared. “We have a 20 year old antiquated system for financials. I am really looking forward to scanning travel documents into the new system.”

Following are a couple more questions and Rebecca’s answers:

### **What is your favorite thing about Workday?**

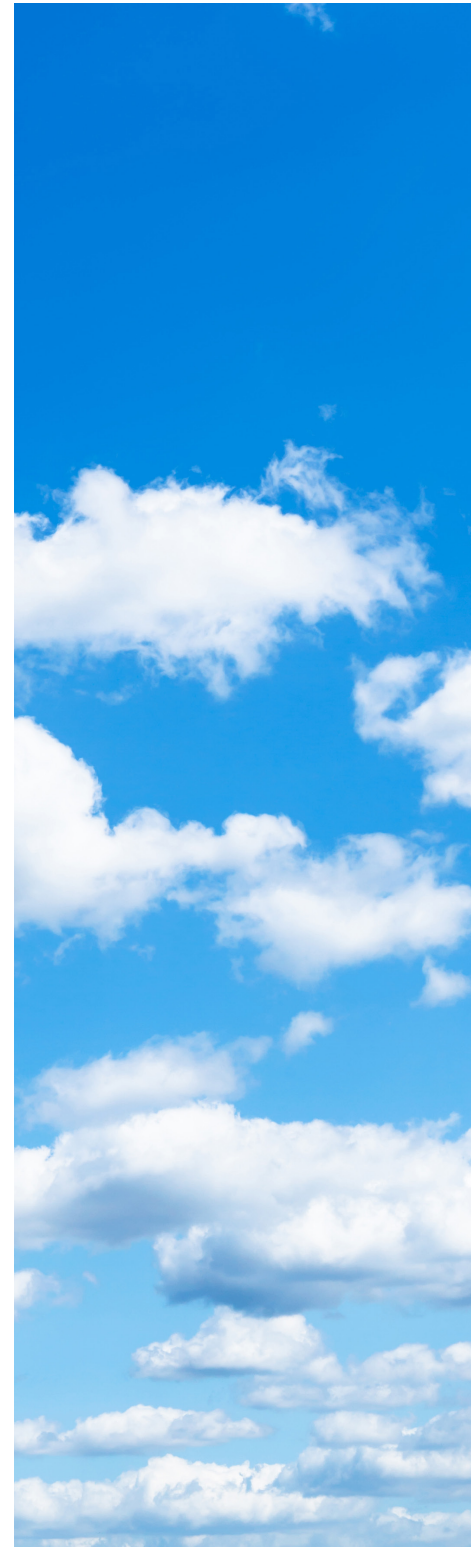
One Program - Not all of these separate programs and passwords to remember.

### **What are some features in Workday that are not in our legacy systems?**

1) Approvals for procurement and travel - all approvals will be done electronically, no more going from office to office for signatures and if you are wondering where your request is in the system you can look up your request electronically and see where it is in the approval process. We will be saving so much time by just being able to see the status from our desktop, or even smartphone.

2) Procurement - Purchases will be so streamlined. You will be able to order an item, show where you want it shipped and receive the item on-line. When the invoice comes, it can be electronically matched and paid timely.

A fun fact about Rebecca: She is an avid quilter! Rebecca quilts blankets and knits santa hats for the children of NICU wards. She also quilts lap blankets for Veterans.



# Prototype 1 is Done. Next Up: P2

Now that unit testing of Prototype 1 is nearing completion, the team is focused on building NSHE's second Workday prototype (P2). P2 will use the findings from testing, a copy of real data from all eight NSHE member institutions, and a more complete picture of how Workday must be configured to work for everyone at every institution.

The first prototype (P1) was the team's freshman effort at configuring Workday with NSHE's custom-designed common business processes. P2 will be much closer to the final version NSHE will start using in October 2017. This more refined prototype allows for a more in-depth approach to testing to make sure the whole system works as expected. This version will allow the team to start showing it off in campus demonstrations and hands-on computer labs.

P2 is scheduled to be built through mid-October.

## FAQs

### Q1. Why is NSHE and its member institutions implementing Workday?

Workday will replace our current systems for HR, Payroll, and Finance into one streamlined, state-of-the-art system across all NSHE institutions. Workday was chosen because it is built on current technology, incorporates best practices, and offers regular updates to both the technology and business processes. Because it will be housed in the "cloud," it will provide employees with secure access to their personal information and data anywhere – including from their smart phones and home computers.

### Q2. When is Workday coming?

Workday will "go live" in October 2017.

### Q3. Who will be affected by the transition to Workday? How?

Workday will impact all employees of NSHE and its member institutions. At the very minimum, we'll all be able to better manage our personal information. We'll also be able to update our address, add time, request vacation time, change a beneficiary, change tax withholdings, update direct deposit information and view our compensation and benefit information. Managers will also have easy access to staffing and organizational information. PeopleSoft Student will not be impacted by this change.

### Q4. How will my day-to-day work be affected by Workday?

Workday will standardize processes and procedures across all of our institutions so that we operate as a unified system, compile data that can be easily organized into useful reports and analysis, and streamline a lot of tasks.

## WNC PROJECT REPRESENTATIVES

Project Lead: Darla Dodge

Project Manager: Tommie Guy

### Financial SMEs:

Coral Lopez, Lead

Darla Dodge

Rebecca Martinez

Tiffany Morelli

### Human Resource SMEs:

Irene Tucker, Lead

Brenda Yenkole

### Technology SMEs:

Troy Wadsworth, Lead

Timothy Galluzi

Please contact any of these individuals with your project questions.

## Useful Links:

[WNC iNtegrate2 Westnet Site](#)

[iNtegrate Project Website](#)